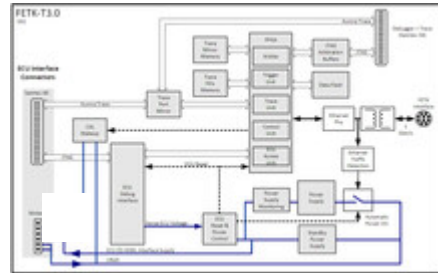


# FETK-T3.0 – Fast ECU Interfaces

Emulator Probe for the Renesas RH850 microcontroller family



CPU interface

Supported processors

Renesas RH850 Family

For a complete list of supported microprocessors, please refer to the product's User's Guide.

Configuration

Project-specific configuration for memory configurations stored in EEPROM

Board

Dimensions (LxWxH)

60 x 60 x 12,7<sup>1</sup> mm / 2,362 x 2,362 x 0,45<sup>1</sup> in

(Note 1: Height does not include an adapter connector)

Power supply

Input voltage

6,6 V to 32 V

Cranking voltage < 3 sec: 3V

Input current at 12 V

Approx. 330 mA normal operation

Approx. 78 mA normal standby

---

Approx. 3 mA deep standby

---

Memory emulation

---

Emulation memory    Processor specific

---

Measured data  
memory                  Processor specific

---

Host interface

---

Connection            1 Gbit/s Ethernet

---

Cable length            max. 30 m/100 ft

---

Ethernet interface    DC decoupling

---

Operation temperature

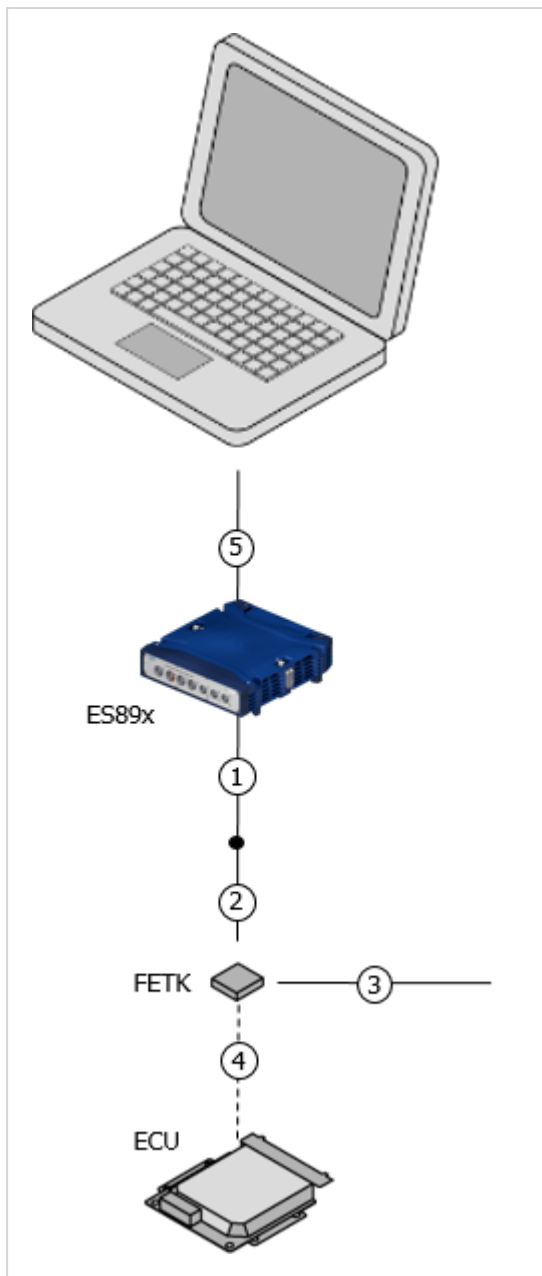
---

Temperature range    -40 °C to +110 °C / -40 °F to +230 °F

---

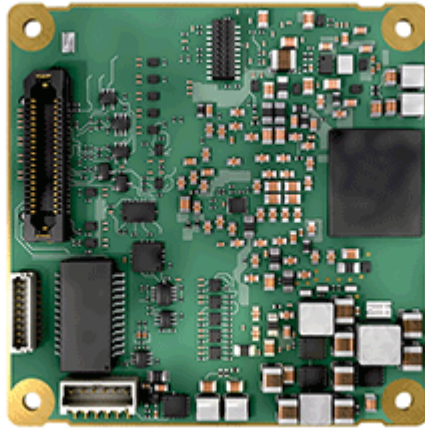
This product has been developed and released for use in automotive applications. For usage in other domains please contact your ETAS representative.

## Ordering Information



- 1 – ES89x Interface Cable
- 2 – ECU Adapter Cables
- 3 – Power Supply Cables
- 4 – FETK - ECU Adapter
- 5 – Ethernet PC Connection

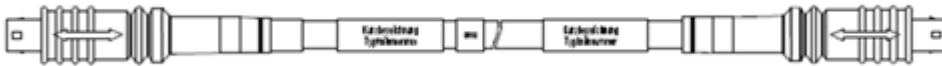
Order Name	Short Name	Order Number
FETK-T3		
Emulator Probe for the Renesas RH850 microcontroller family, including gap pad	FETK-T3.0A	F-00K-111-436



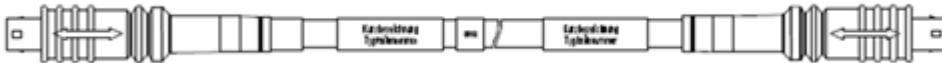
Optional Accessories for FETK-T3

### 1 – ES89x Interface Cable

1 GBit/s Ethernet Connection and Power Supply  
Cable, Lemo 1B FGM - Lemo 1B FGH (10fc-10mc), 3 m      CBE260.1-3      F-00K-109-446



1 GBit/s Ethernet Connection and Power Supply  
Cable, Lemo 1B FGM - Lemo 1B FGH (10fc-10mc), 8 m      CBE260.1-8      F-00K-109-447



### 2 – ECU Adapter Cable

FETK ECU Adapter Cable, pre-assembled into PG9  
screwing, shield on ECU Housing, Lemo 1B PHM - JST      CBAM300.3-0m6      F-00K-112-469  
SHR (10mc-9fc), 0m60



FETK ECU Adapter Cable, shield on ECU-Housing,  
Lemo 1B PHM - JST SHR (10mc-9fc), 0m60      CBAM340.1-0m6      F-00K-109-302



---

FETK ECU Adapter Cable, shield on ECU Housing,  
Lemo 1B HMM - JST SHR (10mc-9fc), 0m17

CBAM350.1-0m17 F-00K-111-439



### 2&3 - Combined ECU Adapter and Power Supply Cable

---

FETK ECU Adapter and Power Supply Cable, pre-  
assembled into PG9 screwing, shield on ECU-  
Housing, Lemo 1B PHM - JST SHR (10mc-9fc) / Lemo  
0B PHG - open wire (2fc-1c), 0m60

CBAM305.1-0m6 F-00K-109-297



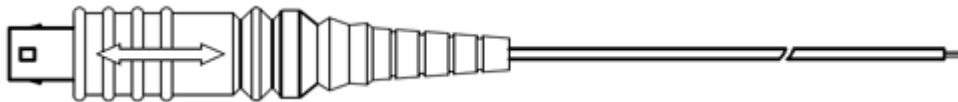
### 3 - Power Supply Cables

---

External Power Supply Cable for ETKs, Lemo 0B -  
FGG open wires (2fc-1c), 2 m

K70.1

F-00K-109-270



ETK Power Supply Cable for External Supply, with  
Filter Coil, Lemo 0B EGG - open wire (2fc-1c), 0m2

KA50

F-00K-000-940



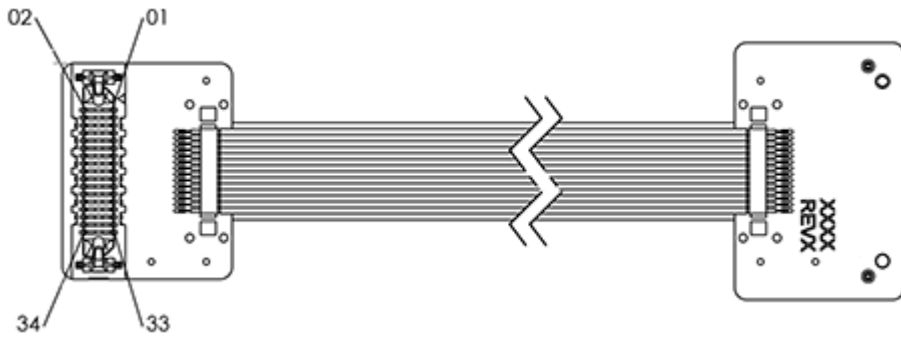
### 4 - FETK - ECU Adapter

---

ETAN2A ETK ECU adapter, SAMTEC - SAMTEC (40fc -  
34fc), 0m136 [Not suitable for use with ETKS\_C3  
(external housing)]

ETAN2A

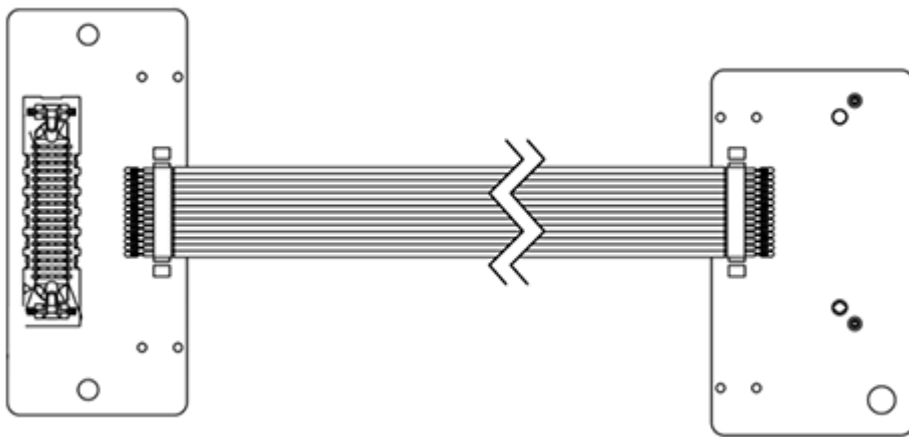
F-00K-110-952



ETAN8A ETK ECU adapter with inverse connector orientation and mounting holes for FETK-T3, SAMTEC - SAMTEC (40fc - 34fc), 0m2

ETAN8A

F-00K-111-992



ETAM2 ETK ECU Adapter, MOLEX - open wires (6fc - 6c), 0m25

ETAM2

F-00K-109-306



ETAM5 FETK ECU Adapter, MOLEX - MOLEX (6fc - 5fc+1c), 0m136

ETAM5

F-00K-110-101



ETAM9 XETK/FETK ECU Adapter, MOLEX - MOLEX (6fc - 5fc), 0m136

ETAM9

F-00K-111-043



ETV5 FETK/XETK ECU Adapter, MOLEX - open wires (6fc - 2c), 0m25

ETV5

F-00K-111-701



## Mechanical Accessories

---

Gap pad for heat dissipation as spare part for FETK-T3.0	FETK-T3_GP	F-00K-111-438
--	------------	---------------

---

## 5 – Ethernet PC Connection

Further information on the Ethernet PC Connection, can be found on the [cable page Ethernet Connection](#).

Note: This list contains only a selection of available adapters. A comprehensive overview is available in the User Guide of each ETK.

