
INCA V7.2 Service Pack 17

Release Notes

Release: June 2020

Copyright

The data in this document may not be altered or amended without special notification from ETAS GmbH. ETAS GmbH undertakes no further obligation in relation to this document. The software described in it can only be used if the customer is in possession of a general license agreement or single license. Using and copying is only allowed in concurrence with the specifications stipulated in the contract. Under no circumstances may any part of this document be copied, reproduced, transmitted, stored in a retrieval system, or translated into another language without the express written permission of ETAS GmbH. © **Copyright** 2020 ETAS GmbH, Stuttgart
The names and designations used in this document are trademarks or brands belonging to the respective owners.

Contents

1	Introduction.....	7
1.1	Definitions and Abbreviations	7
1.2	References.....	8
1.3	Conventions.....	8
1.4	User Documentation	8
2	Product Definition.....	8
2.1	Functions at a glance	8
2.2	General Description.....	9
2.2.1	Safety Notice	9
2.2.2	Known Issue Reports	9
2.2.3	System Prerequisites.....	9
2.2.4	Software Prerequisites.....	10
2.3	Delivery.....	10
2.4	Installation.....	11
2.4.1	Installation Hints	11
2.4.2	Firmware – Hardware Service Pack (HSP).....	12
2.4.3	Installation.....	12
3	Service Pack Information - Known Issues - New Features and Improvements.....	23
3.1	Important Note to the Installation valid for each Service Pack.....	23
3.2	Known Issues.....	23
3.3	INCA V7.2 SP 17.....	25
3.3.1	Content of Service Pack and recommended installation	25
3.3.2	Known issues and important hints	26
3.3.3	Solved known issue and important hints.....	26
3.3.4	Changed installations, major bug fixes and improvements	26
3.4	INCA V7.2 SP 16.1.....	27
3.4.1	Content of Service Pack and recommended installation	27
3.4.2	Known issues and important hints	28
3.4.3	Solved known issue and important hints.....	28
3.4.4	Changed installations, major bug fixes and improvements	28
3.5	INCA V7.2 SP 16.....	29
3.5.1	Content of Service Pack and recommended installation	29
3.5.2	Known issues and important hints	30
3.5.3	Solved known issue and important hints.....	30
3.5.4	Changed installations, major bug fixes and improvements	30
3.6	INCA V7.2 SP 15.....	31
3.6.1	Content of Service Pack and recommended installation	31
3.6.2	Known issues and important hints	32
3.6.3	Solved known issue and important hints.....	33
3.6.4	Changed installations, major bug fixes and improvements	33
3.7	INCA V7.2 SP 14.1.....	34
3.7.1	Content of Service Pack and recommended installation	34
3.7.2	Known issues and important hints	35
3.7.3	Solved known issue and important hints.....	36
3.7.4	Changed installations, major bug fixes and improvements	36
3.8	INCA V7.2 SP 14.....	36
3.8.1	Content of Service Pack and recommended installation	36
3.8.2	Known issues and important hints	37
3.8.3	Solved known issue and important hints.....	38
3.8.4	Changed installations, major bug fixes and improvements	38
3.9	INCA V7.2 SP 13.2.....	39

3.9.1	Content of Service Pack and recommended installation	39
3.9.2	Known issues and important hints	40
3.9.3	Solved known issues and important hints	41
3.9.4	Changed installations, major bug fixes and improvements	41
3.10	INCA V7.2 SP 13.1	42
3.10.1	Content of Service Pack and recommended installation	42
3.10.2	Known issues and important hints	43
3.10.3	Solved known issue and important hints.....	44
3.10.4	Changed installations, major bug fixes and improvements	44
3.11	INCA V7.2 SP 13.....	45
3.11.1	Content of Service Pack and recommended installation	45
3.11.2	Known issues and important hints	46
3.11.3	Solved known issue and important hints.....	47
3.11.4	Changed installations, major bug fixes and improvements	47
3.12	INCA V7.2 SP 12.2.....	48
3.12.1	Content of Service Pack and recommended installation	48
3.12.2	Known issues and important hints	49
3.12.3	Changed installations, major bug fixes and improvements	49
3.1	INCA V7.2 SP 12.1.....	49
3.1.1	Content of Service Pack and recommended installation	49
3.1.2	Known issues and important hints	50
3.1.3	Changed installations, major bug fixes and improvements	51
3.2	INCA V7.2 SP 12.....	51
3.2.1	Content of Service Pack and recommended installation	51
3.2.2	Known issues and important hints	52
3.2.3	Solved known issue and important hints.....	53
3.2.4	Changed installations, major bug fixes and improvements	53
3.3	INCA V7.2 SP 11.1.....	53
3.3.1	Content of Service Pack and recommended installation	53
3.3.2	Known issues and important hints	54
3.3.3	Changed installations, major bug fixes and improvements	55
3.4	INCA V7.2 SP 11.....	55
3.4.1	Content of Service Pack and recommended installation	55
3.4.2	Known issues and important hints	56
3.4.3	Solved known issue and important hints.....	56
3.4.4	Changed installations, major bug fixes and improvements	57
3.5	INCA V7.2 SP 10.....	57
3.5.1	Content of Service Pack and recommended installation	57
3.5.2	Known issues and important hints	58
3.5.3	Solved known issue and important hints.....	59
3.5.4	Changed installations, major bug fixes and improvements	59
3.6	INCA V7.2 SP 9	60
3.6.1	Content of Service Pack and recommended installation	60
3.6.2	Known issues and important hints	61
3.6.3	Solved known issue and important hints.....	61
3.6.4	Changed installations, major bug fixes and improvements	61
3.7	INCA V7.2 SP 8.3.....	61
3.7.1	Content of Service Pack and recommended installation	61
3.7.2	Known issues and important hints	62
3.7.3	Solved known issue and important hints.....	62
3.7.4	Changed installations, major bug fixes and improvements	63
3.8	INCA V7.2 SP 8.2.....	63
3.8.1	Content of Service Pack and recommended installation	63
3.8.2	Known issues and important hints	64
3.8.3	Solved known issue and important hints.....	64
3.8.4	Changed installations, major bug fixes and improvements	64
3.9	INCA V7.2 SP 8.1.....	65

- 3.9.1 Content of Service Pack and recommended installation 65
- 3.9.2 Known issues and important hints 66
- 3.9.3 Solved known issue and important hints..... 66
- 3.9.4 Changed installations, major bug fixes and improvements 66
- 3.10 INCA V7.2 SP 8 66
 - 3.10.1 Content of Service Pack and recommended installation 66
 - 3.10.2 Known issues and important hints 67
 - 3.10.3 Solved known issue and important hints..... 67
 - 3.10.4 Changed installations, major bug fixes and improvements 68
- 3.11 INCA V7.2 SP 7 68
 - 3.11.1 Content of Service Pack and recommended installation 68
 - 3.11.2 Known issues and important hints 69
 - 3.11.3 Solved known issue and important hints..... 69
 - 3.11.4 Changed installations, major bug fixes and improvements 69
- 3.12 INCA V7.2 SP 6.2..... 70
 - 3.12.1 Content of Service Pack and recommended installation 70
 - 3.12.2 Known issues and important hints 71
 - 3.12.3 Solved known issue and important hints..... 71
 - 3.12.4 Changed installations, major bug fixes and improvements 71
- 3.13 INCA V7.2 SP 6 71
 - 3.13.1 Content of Service Pack and recommended installation 71
 - 3.13.2 Known issues and important hints 72
 - 3.13.3 Solved known issue and important hints..... 72
 - 3.13.4 Changed installations, major bug fixes and improvements 72
- 3.14 INCA V7.2 SP 5.1..... 74
 - 3.14.1 Content of Service Pack and recommended installation 74
 - 3.14.2 Known issues and important hints 75
 - 3.14.3 Solved known issue and important hints..... 75
 - 3.14.4 Changed installations, major bug fixes and improvements 75
- 3.15 INCA V7.2 SP 5 76
 - 3.15.1 Content of Service Pack and recommended installation 76
 - 3.15.2 Known issues and important hints 77
 - 3.15.3 Solved known issue and important hints..... 77
 - 3.15.4 Changed installations, major bug fixes and improvements 77
- 3.16 INCA V7.2 SP 4.1..... 78
 - 3.16.1 Content of Service Pack and recommended installation 78
 - 3.16.2 Known issues and important hints 80
 - 3.16.3 Changed installations, major bug fixes and improvements 80
- 3.17 INCA V7.2 SP 4 80
 - 3.17.1 Content of Service Pack and recommended installation 80
 - 3.17.2 Known issues and important hints 81
 - 3.17.3 Solved known issue and important hints..... 81
 - 3.17.4 Changed installations, major bug fixes and improvements 81
- 3.18 INCA V7.2 SP 3.2..... 82
 - 3.18.1 Content of Service Pack and recommended installation 82
 - 3.18.2 Known issues and important hints 83
 - 3.18.3 Solved known issue and important hints..... 83
 - 3.18.4 Changed installations, major bug fixes and improvements 84
- 3.19 INCA V7.2 SP 3.1..... 84
 - 3.19.1 Content of Service Pack and recommended installation 84
 - 3.19.2 Known issues and important hints 85
 - 3.19.3 Changed installations, major bug fixes and improvements 85
- 3.20 INCA V7.2 SP 3 85
 - 3.20.1 Content of Service Pack and recommended installation 85
 - 3.20.2 Known issues and important hints 86
 - 3.20.3 Solved known issues and important hints 86
 - 3.20.4 Changed installations, major bug fixes and improvements 87

3.21 INCA V7.2 SP 2.2.....	88
3.21.1Content of Service Pack and recommended installation	88
3.21.2Known issues and important hints	89
3.21.3Changed installations, major bug fixes and improvements.....	90
3.22 INCA V7.2 SP 2.1.....	91
3.22.1Content of Service Pack and recommended installation	91
3.22.2Known issues and important hints	91
3.22.3Changed installations, major bug fixes and improvements.....	92
3.23 INCA V7.2 SP 2	92
3.23.1Content of Service Pack and recommended installation	92
3.23.2Known issues and important hints	93
3.23.3Changed installations, major bug fixes and improvements.....	93
3.24 INCA V7.2 SP 1.2.....	94
3.24.1Content of Service Pack and recommended installation	94
3.24.2Known issues and important hints	95
3.24.3Changed installations, major bug fixes and improvements.....	95
3.25 INCA V7.2 SP 1.1.....	96
3.25.1Content of Service Pack and recommended installation	96
3.25.2Known issues and important hints	97
3.25.3Changed installations, major bug fixes and improvements.....	97
3.26 INCA V7.2 SP 1	98
3.26.1Content of Service Pack and recommended installation	98
3.26.2Known issues and important hints	98
3.26.3Changed installations, major bug fixes and improvements.....	99
3.27 INCA V7.2.0 Service Pack	99
3.27.1Content of Service Pack and recommended installation	99
3.27.2Known issues and important hints	100
3.27.3Changed installations, major bug fixes and improvements.....	100
4 Contact, Support and Problem Reporting.....	102

1 Introduction

Dear customer, in this file you will find the latest information about the ETAS INCA V7.2 Service Pack. The INCA V7.2 Service Pack will update automatically the most common ETAS INCA products on your computer (included ETAS products see Release Notes below).

For detailed information about the included ETAS products read the corresponding release notes, please.

Important note:

IT IS NECESSARY TO UPDATE ALL FIRMWARE USING THE RECOMMENDED HARDWARE SERVICE PACK (HSP) V10.x PRIOR TO USING INCA V7.2 WITH HARDWARE

With the every new ETAS INCA Service Pack typically also a higher HSP version must be used. For the corresponding version see the release notes below.

HSP is not part of the INCA Service Pack. The latest recommended HSP version is available on the ETAS Download Page.

1.1 Definitions and Abbreviations

Term/Abbreviation	Definition
CDM	Calibration Data Manager
EE	INCA Experimental Environment
EHI	ETAS Help Desk International
LiMa	ETAS License Manager
HSP	Hardware Service Pack
HF	Hotfix
HW	Hardware
MDA	INCA Measure and Data Analysis
MIP	Matlab Integration Package
MR	Multi-Recorders
OHI	Open Hardware Integration
OS	Operating System
KIR	Known Issue Report – For severe Problem Reports which occur after a release, ETAS has introduced the Known Issue Report to inform affected customer immediately. The current Known Issues of former versions can be found on the ETAS website: http://www.etas.com/kir
PR	Problem Report
SP	Service Pack
SW	Software
VSD	Variable Selection Dialog
WB	Walkback, Inca system error

1.2 References

For further information see the Release Notes of the corresponding products shipped with the INCA Service Pack.

1.3 Conventions

The following typographical conventions are used in this document:

Choose File → Open .	Menu commands are shown in boldface.
Click OK .	Buttons are shown in boldface.
Press <ENTER>.	Keyboard commands are shown in angled brackets.
The "Open File" dialog box is displayed.	Names of program windows, dialog boxes, fields, etc. are shown in quotation marks.
Select the file <code>setup.exe</code>	Text in drop-down lists on the screen, program code, as well as path- and file names are shown in the Courier font.
A <i>distribution</i> is always a one-dimensional table of sample points.	General emphasis and new terms are set in italics.

1.4 User Documentation

The INCA user's documentation in PDF format can be found on the DVD or in the installation folder on the PC.

It can be called up from INCA via the menu item ? → **Manuals and Tutorial** or via the Windows start – menu: → **Program** → **ETAS INCA 7.2** → **Manuals and Tutorial**.

2 Product Definition

2.1 Functions at a glance

An ETAS INCA Service Pack (SP) is one single ZIP file containing

- Latest version of INCA V7.2 and the most important related INCA Add-ons
- Installation routine, which automatically installs/updates INCA and the INCA add-ons already installed on the user's PC (and shipped with the current INCA Service Pack).
- Add-ons, which are not installed on the user's PC, will not be installed / updated automatically but on demand (selection via check box).
This may also require a valid license key.
- INCA and the INCA add-ons are available in the ZIP as single / separate installations as well. It is still possible to create user / company specific installations if required. If an add-on is not installed, it could be installed manually by starting the corresponding installation. But this is no longer recommended. Recommended is to use the `Setup_ServicePack` to guarantee that all products are updated to the same release level.
- INCA Refreshes, Hotfixes and add-ons will no longer be available on the download page as single downloads.
- INCA Service Packs are be offered for INCA V7.0 and higher
- The Release Notes, What's New, Updated Manuals and Open Source Software Attribution documentation of INCA and the included INCA add-ons are collected in folder "Documentation"

After successful installation of the INCA Service Pack with `Setup_ServicePack` the complete content of folder "Documentation" is available via **Program-Menu -> ETAS -> INCA 7.2 ServicePack** or directly on `<INCA 7.2 installation path>\Readme\INCA_ServicePack`.

2.2 General Description

2.2.1 Safety Notice

Calibration activities influence the behavior of the ECU and the systems controlled by the ECU. This may result in unexpected behavior of the vehicle and thus can lead to safety critical situations.

Only well trained personnel should be allowed to perform calibration activities.

Sending CAN messages influences the behavior of the CAN bus network and the systems connected to it. This may result in unexpected behavior of the vehicle and thus can lead to safety critical situations.

Only well trained personnel should be allowed to perform CAN message sending activities.

Calibrate measurement (Write to RAM) activities influence the behavior of the ECU and the systems controlled by the ECU. This may result in unexpected behavior of the vehicle and thus can lead to safety critical situations.

Only well trained personnel should be allowed to perform calibrate measurements activities.

Important: With release of INCA V7.2 SP13.1 the new ETAS Safety Advice is available with the following additional languages: Belarussian, Russian, Ukrainian, Vietnamese, Thai, Traditional Chinese, Indonesian, and Hindi. Please read it carefully.

The ETAS Safety Advice is displayed during start of INCA (Disclaimer) and it is available in `ETAS_Safety_Advice.pdf` in the folder `\Documentation\ReleaseNotes\` of the installation package (ZIP file) or after installation of the INCA Service Pack in

Program-Menu -> ETAS -> INCA 7.2 ServicePack in the folder `\ReleaseNotes`.

2.2.2 Known Issue Reports

If a product issue develops, ETAS will prepare a Known Issue Report (KIR) and post it on the internet. The report includes information regarding the technical impact and status of the solution. Therefore you must check the KIR applicable to this ETAS product version and follow the relevant instructions prior to operation of the product.

The Known Issue Report (KIR) can be found here:

<http://www.etas.com/kir>

2.2.3 System Prerequisites

Same like the included INCA refresh, hotfix and add-on installations and INCA related SW. See the Release Notes of the corresponding products shipped with the Service Pack.

Important Note: MDA 8 is the first application included in the INCA V7.2 SP13 and higher, which supports Windows 64-bit operating systems. It is not possible to install it on a 32-bit

operating system. Installation on Windows 32 bit variants will fail with error.
Recommendation: Do not select MDA V8.3 for installation in the Service Pack Installer in this case.

2.2.4 Software Prerequisites

To update the SW shipped with this INCA Service Pack, the corresponding product has to be installed on the computer. Most of the INCA – Add-Ons could be installed directly with the Service Pack installer on request, but the DVD/CD of the corresponding product might contain additional tools and documentation.

2.3 Delivery

The software is delivered with an installation routine, software, documentation, tools, utilities, and further information. All software documentation (e.g. the Release Notes of the included ETAS products/add-ons) is available in the Portable Document Format (PDF) in the folder \Documentation, which requires Adobe® Reader®.

The Service Pack (ZIP File) contains the following items:

Directory	Meaning / Explanation
Main folder \INCA_V72SP_N	Installations and documentation of INCA V7.2SP N and related SW Important: do not change folder structure below and unzip the complete folder content and structure.
- Start.exe	Guided tour through the content of DVD and Start of the product installation. Note: DVD only.
- Setup_ServicePack.exe - Setup_ServicePack.pdf	Setup to install/update the included INCA related SW (Refresh, hotfix, Add-Ons, and related tools) automatically New with INCA 7.2 SP5: Documentation of usage, parameters, and error codes of Setup_ServicePack.exe
- Installation.xml	Configuration of the Service Pack installation – preselecting of Add-Ons which shall be installed. Also for silent installation.
- INCA_V7.n.m_ServicePack-Release_Notes.pdf - INCA-V7.n-SP-Whats-new.pdf	This Service Pack release notes and additional important information in PDF-format (or TXT-format)
Sub (sub) – Folders	
\Documentation	Release Notes, What's New, Manuals, etc. of the corresponding installations of the SP and related documentation (e.g. open source software documentation). Includes also last minute changes, known issues. The complete folder is copied to the computer and linked into the Start Menu.
\01_INCA_V7.2.x	INCA Refresh, Hotfix and Add-On and the complete documentation of the INCA SP
- \00_INCA72x	The INCA update installation
- \..\General AddOns (free) - \..\Licensed AddOns	The installations of the corresponding INCA add-on refreshes (do never change this folders!)
- \MIP	Additional installations or tools, e.g. the INCA - AddOn MIP

<pre> - \INS_IP Tools - \MDFShellExtension - \LicenseServer_FlexNet - \Tool_Name </pre>	<p>installation (without automatic update/installation via Setup_ServicePack.exe). These installations has to be started manually via double click on installation executable (see release notes for details)</p>
\03_MDA_V7.2.x	MDA installation
\05_ETK_Tools	ETK Tools installation
\HSP	Hardware Service Pack installation (DVD only)
\Demos	Different videos (DVD only)
<pre> \de-DE \en-US \fr-FR \ja-JP \zh-CN \de-CH \HTML </pre>	<p>Additional internal tools to support the installation, e.g. national language support of the Setup_ServicePack.exe</p>
01_INCA_V7.2.x\00_Prod_INCA_72x\ Packages\3rdParty	<p>Required 3rd Party installations (like .NET, different versions of vccredist) which are all required for operation of the INCA Service Pack.</p> <p>Only for IT/Tool coordinators: If installed separately on a computer, these installations can be removed from the INCA Service Pack Installation.</p> <p>Notes: The INCA SP installation might fail if not installed.</p> <p>After installation a reboot is required before installation of the INCA Service Pack.</p> <p>As the 3rd Party installation might require a reboot, it is recommended to install these in advance and reboot the computer, to avoid a reboot during the installation of the INCA Service Pack.</p>

2.4 Installation

2.4.1 Installation Hints

Shut down all ETAS SW before updating it with the INCA Service Pack. Otherwise the installation might be incomplete, stop, or the final installation will not run without issues.

Very important: After the installation a reboot of the computer system is required. This is also true for hotfix installations.

Whenever uninstalling INCA, the INCA uninstall program should be used. This ensures that all add-ons and other products installed with INCA are also uninstalled (except ETASData and ETAS License Manager). Never delete files or folders manually.

Downdate to a former INCA Service Pack version is also recommended with help of the Setup_ServicePack.exe.

Important: INCA Add-Ons (or INCA engineering Add-Ons) which are not part of the INCA Service Pack has to be updated manually to avoid unexpected behavior. Not updated Add-Ons might lead to system errors or wrong results.

See also section known issue for first time installation of the INCA 7.2 SP if .NET 4.6.1 is not installed.

2.4.2 Firmware – Hardware Service Pack (HSP)

Important note:

IT IS NECESSARY TO UPDATE ALL FIRMWARE USING THE RECOMMENDED HARDWARE SERVICE PACK (HSP) V11.x PRIOR TO USING INCA V7.2 WITH HARDWARE

With the every new INCA Service Pack typically also a higher HSP version must be used.

For the corresponding version see the release notes below.


HSP is not part of the INCA Service Pack. The latest recommended HSP version is available on the ETAS Download Page.

2.4.3 Installation

- With INCA V7.2 Service Packs it is now also possible to install INCA and the including Add-Ons also the first time on the computer OR to update and down date an existing INCA V7.2 installation.
 - All applications, but at least all ETAS applications, have to be closed.
 - No other update shall be executed in parallel (e.g. update operating system or components or any other software). Especially, if a computer was not used for a while, wait until all updates are installed and reboot computer.
 - If downloaded from ETAS Download Center as ZIP-file: Extract/Copy the complete structure (including all (sub-)folders) of the Service Pack (ZIP-file) to any share (recommended on your computer due to performance).
In case of issues with the ZIP-file, please make sure that downloaded content is recognized by Windows as trusted:
After Downloading the ZIP file, select "Properties" via right-click -> "General" Layer -> press "Unblock" button at Security Option.
Afterwards you may extract the ZIP file and install Service Pack as usual.
 - Do not change the folder structure or folder-names or any name of install-executables of the INCA Service Pack.
The complete content is required for proper installation!
 - To start the installation of the Service Pack, double click `Setup_ServicePack.exe`
Note: Please be patient until the Service Pack Installer collects all information of the computer and the INCA Service Pack.
 - Select your language in the installation window. Note, with INCA 7.2.0 and higher, at the same time **also the language of all ETAS multi-language products (including INCA) is selected**/change by this step (see detailed description below).
 - The installed products found on computer and the available products within the INCA Service Pack are displayed. Choose your option and <Start> installation or <Cancel> installation.
 - During installation the progress is shown. Do not interrupt the installation.
 - After the installation a reboot is required.
- Fig with GUI of the Setup Service Pack (INCA 7.2.0):

Service Pack Installation

This is a Service Pack Installer.
Please keep your ETAS-Products up to date.



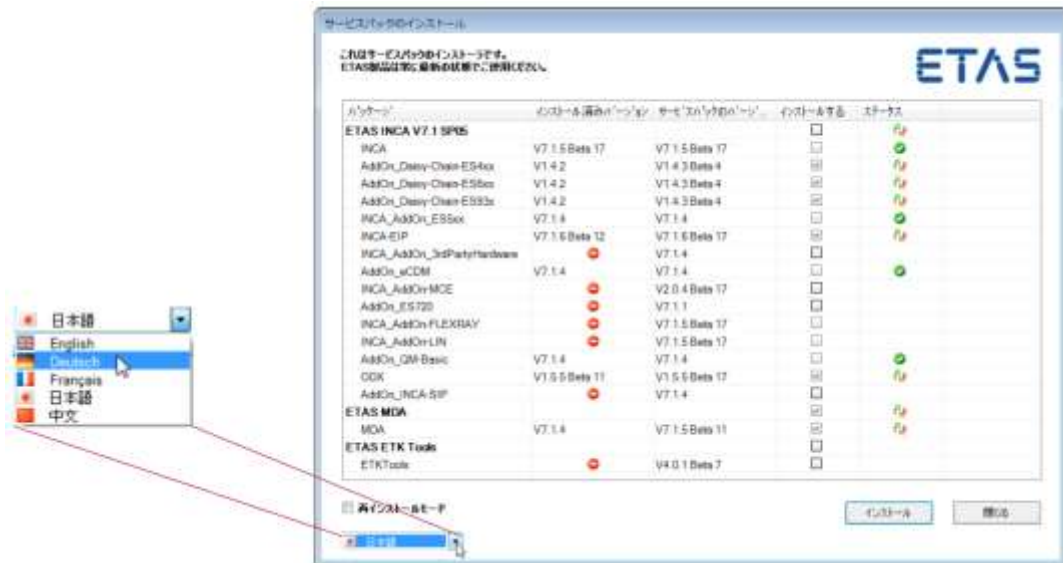
Package	Installed Version	Package Version	Should Install	Status
ETAS INCA			<input type="checkbox"/>	
INCA	V7.2.0 Beta 887	V7.2.0 Beta 887	<input type="checkbox"/>	
General AddOns (free)			<input checked="" type="checkbox"/>	
AddOn_Daisy-Chain-ES4xx	V7.2.0.495	V7.2.0.495	<input type="checkbox"/>	
AddOn_Daisy-Chain-ES6xx	V7.2.0.175	V7.2.0.175	<input type="checkbox"/>	
AddOn_Daisy-Chain-ES93x	V7.2.0.171	V7.2.0.171	<input type="checkbox"/>	
AddOn_ES5xx	V7.2.0.173	V7.2.0.173	<input type="checkbox"/>	
AddOn_ES9xx	V7.2.0.173	V7.2.0.173	<input type="checkbox"/>	
AddOn_3rdPartyHardware	V7.2.0.178	V7.2.0.178	<input type="checkbox"/>	
AddOn_eCDM	V7.2.0.170	V7.2.0.170	<input type="checkbox"/>	
AddOn_KID	V7.2.0.167	V7.2.0.167	<input type="checkbox"/>	
AddOn_Video-Tutorials		V7.2.0.32	<input checked="" type="checkbox"/>	
Licensed AddOns			<input checked="" type="checkbox"/>	
AddOn_MCE		V7.2.0.487	<input checked="" type="checkbox"/>	
AddOn_FlexRay	V7.2.0.483	V7.2.0.483	<input type="checkbox"/>	
AddOn_LIN		V7.2.0.481	<input checked="" type="checkbox"/>	
AddOn_QM-Basic		V7.2.0.489	<input checked="" type="checkbox"/>	
AddOn_INCA-EIP		V7.2.0.484	<input checked="" type="checkbox"/>	
AddOn_INCA-SIP		V7.2.0.486	<input checked="" type="checkbox"/>	
AddOn_ODX		V7.2.0.488	<input checked="" type="checkbox"/>	
ETAS MDA			<input type="checkbox"/>	
MDA	V7.2.0 Beta 827	V7.2.0 Beta 827	<input type="checkbox"/>	
ETAS ETKTools			<input type="checkbox"/>	
ETKTools	V4.1.0 Beta 5	V4.1.0 Beta 5	<input type="checkbox"/>	

Re-Install mode

English

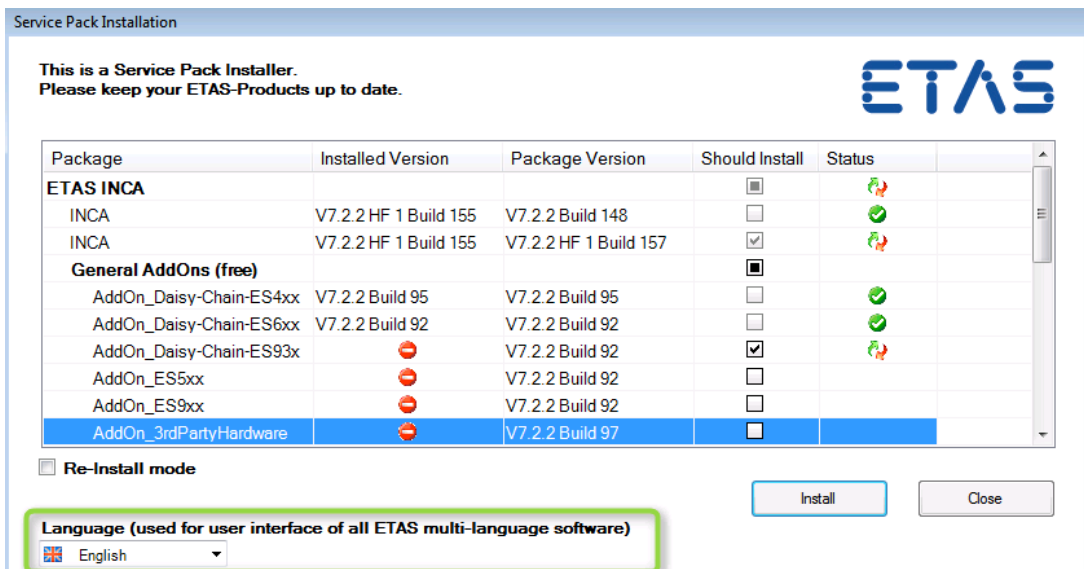
Install Close

- Multi Language Support for the Service Pack Installer:



The language of the Service Pack Installer can be selected.

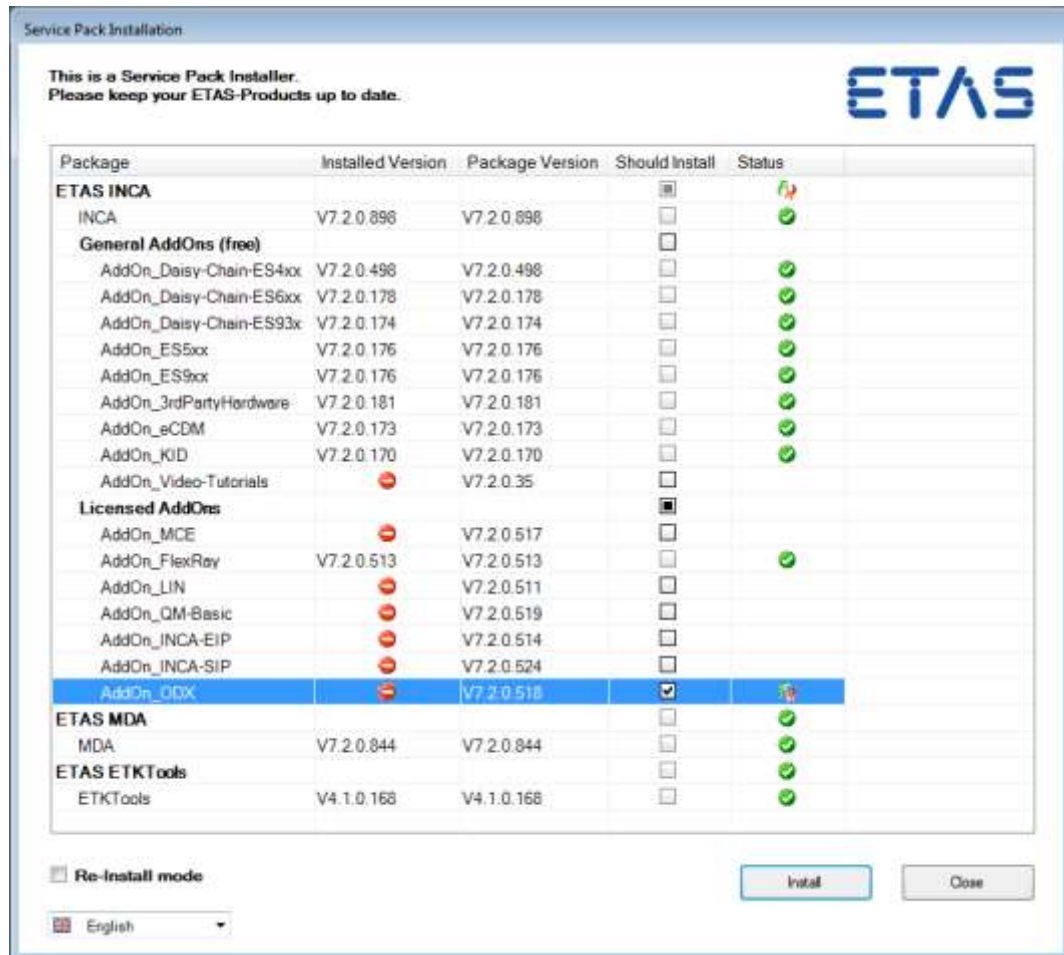
- New with INCA V7.2.0 and improved with INCA V7.2 SP2.1: The **language of** the Service Pack Installation (GUI) **and** the **ETAS product language** can be selected in one step within the Setup Service Pack GUI during installation.



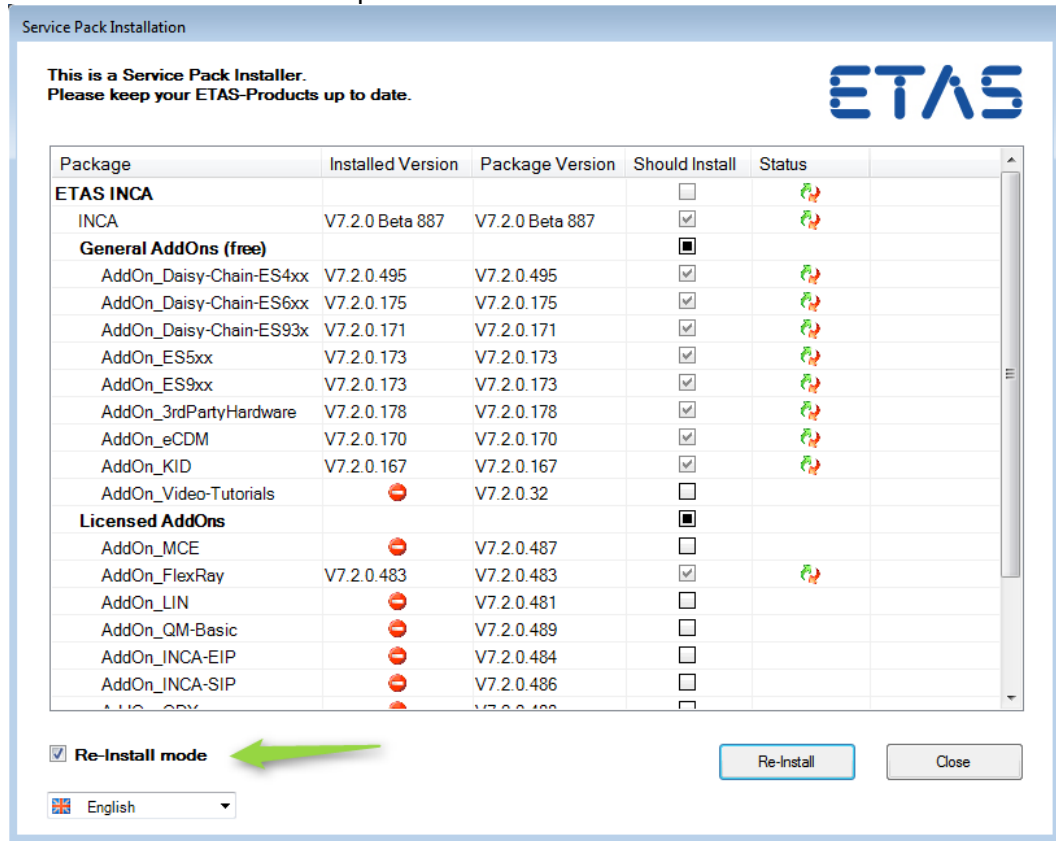
With this option it is also possible to change the ETAS product language of INCA and all ETAS multi-language software after installation.

Note: This is only possible if the registry key HKEY_CURRENT_USER\Software\ETAS\General\Language or HKEY_LOCAL_MACHINE\Software\ETAS\General\Language is not set (not present at all) and not set to any language.

- New with INCA 7.1 SP4: It is possible to select a Product or Add-On for additional installation if not installed on computer via the corresponding check box. With INCA 7.2 it is also possible to select INCA Add-On Lin and FlexRay for installation. "Select all" is also possible via selection on top level. See following fig. the INCA AddOn ODX is selected for installation.



Also the combination with "reinstall mode" is possible:
Re-Installation of all selected products in correct order.



Note: If one of the required installations failed, then the installation of the complete SP is failed.

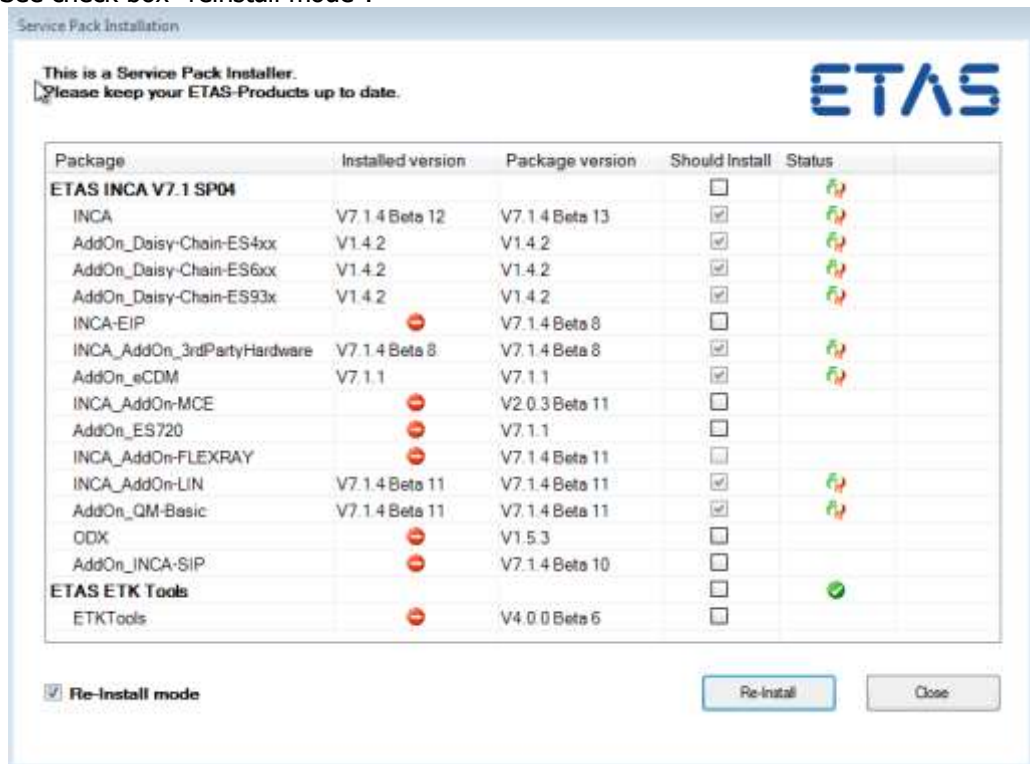
- Check if all applications are closed, please.
- Try installation of the SP again.
- If still failed, contact your local support, please.
- Details of the issue with the SP installation might be found in the log files
<ETAS Default log directory>\ServicePack\
- SP_Setup_year_month_day.log
- SP_Setup_year_month_day_debug.log

Note: If there is no DefaultLogPathName key in registry, logs will be stored in %temp%.

- Issues with each single installation could be found in the corresponding log files:
%AppData%\ETAS\SETUP\[Date_Time]_Setup.log.
If the setup is run by a SYSTEM user account, logs could be found in
%WINDIR%\System32\config\systemprofile\AppData\Roaming\ETAS\Setup
or
%WINDIR%\SysWOW64\config\systemprofile\AppData\Roaming\ETAS\Setup

- **Silent installation** of the INCA Service Pack \s
The installation with Setup_ServciePack might be also started in silent mode with start parameter /s

- > In case of successful installation of all required installations the errorlevel "0" is returned.
- > Reboot of the system has to be done via script or manually.
- Start with parameter \r
Reinstall the installed Products/Add-Ons in the correct order.
Note: Only the installed Add-Ons (shipped with the SP) will be installed again.
- Complete list of parameter: see [Setup_ServicePack.pdf](#).
- With V1.1.1 (with INCA 7.1 SP4): Option \r is now also available in the GUI. See check box "reinstall mode".

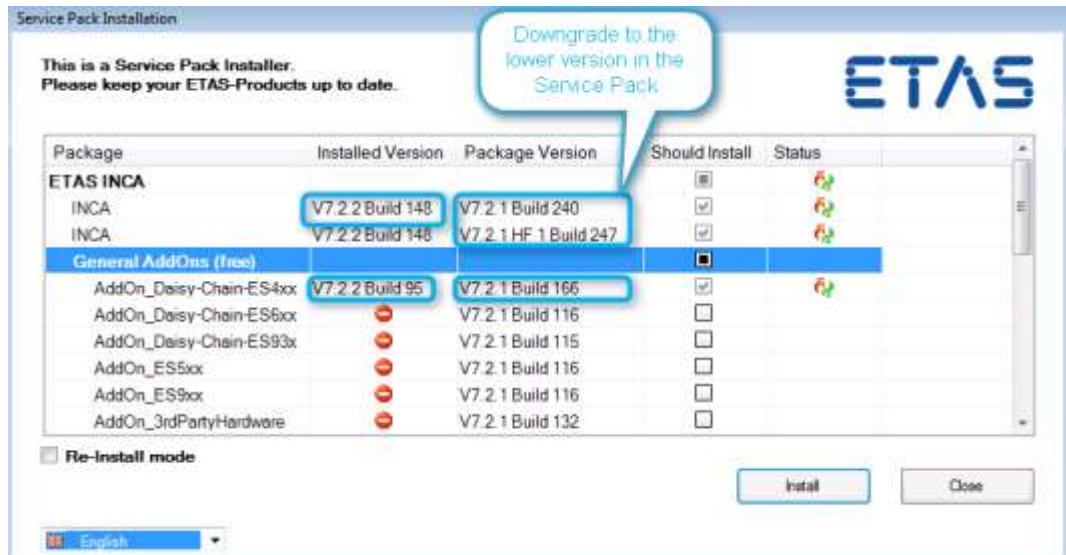


- New with INCA 7.2.0:
It is now also possible to preselect the installations. This selection is used during manual installation and could be used/changed for silent installation (in combination with parameter /s).
 - o Installation.xml is used to configure installation. Current setting is the default selection like shipped with INCA 7.2.0 (also an example)
 - o Following start parameter for Setup_ServicePack.exe are possible:
 - /CreateConfiguration Generate configuration file for given SP. to generate a new Installation.xml file with default settings.
 - /DefaultConfiguration=<filename> Set a configuration file for installation. If not set, default Installation.xml in parallel to SetupServicePack.exe will be used.

- Semantic of allowed action values of Installation.xml:
 - **Install:** installation will be triggered if possible. It is not possible to be triggered for AddOns which have no base products or for Products/AddOns in case of a downgrade.
 - **Exclude:** installation will not be triggered if possible. In case a base installation is triggered for upgrade, also for already installed Addons this upgrade is mandatory. The exclude action is needed when the user wants to exclude packages from a category where the action is set to install.
 - **Default:** Only for already installed Products/AddOns an upgrade will be triggered.
 - **Inherited:** Value for AddOns Action is inherited from parent category.

- **New with INCA V7.2 SP1.2, INCA V7.2 SP2.1 and with INCA V7.2 SP3**

- Support of MSI based INCA hotfix installations (e.g. INCA V7.2.1 HF1, INCA 7.2.2 HF1)
- Downgrade to the current INCA V7.2 Service Pack, e.g. from INCA V7.2 SP2 to this Service Pack (INCA V7.2 SP1.2 or SP2.1) like displayed in the fig. below. The former and new version is displayed like usual, but in this case the new installed version will be lower than before. (Not shipped with INCA V7.2 SP2)
Note: Additional installations not part of the Service Pack (e.g. engineering Add-Ons) have to be installed additionally.

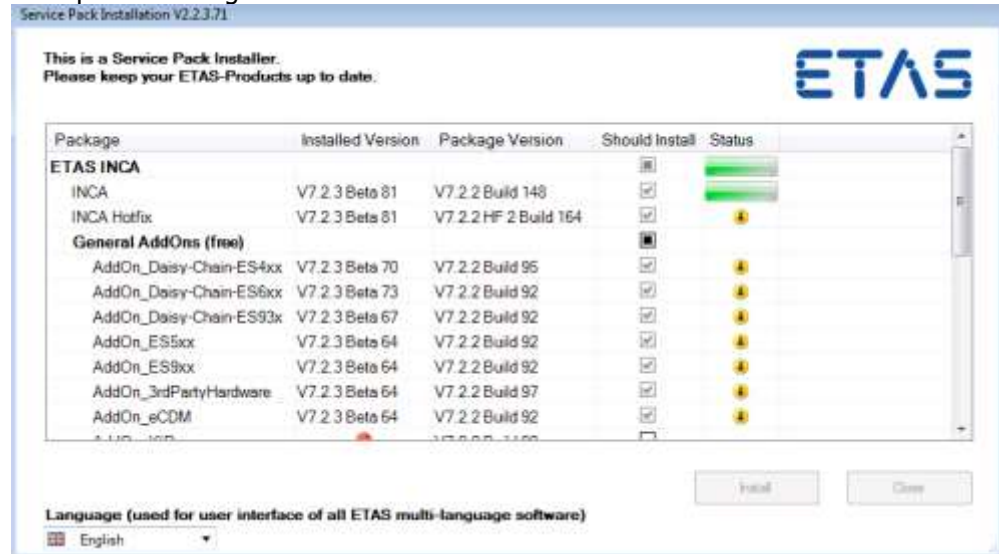


Further enhancement with INCA V7.2 SP 3 planned.

- **New with INCA V7.2 SP2.2 and with INCA V7.2 SP3**

- Updates and downgrades are visualized with additional icons in the Status column.
 - In case of upgrade ⬆️ is displayed.
 - In case of downgrade ⬇️ is displayed.

Example for downgrade:

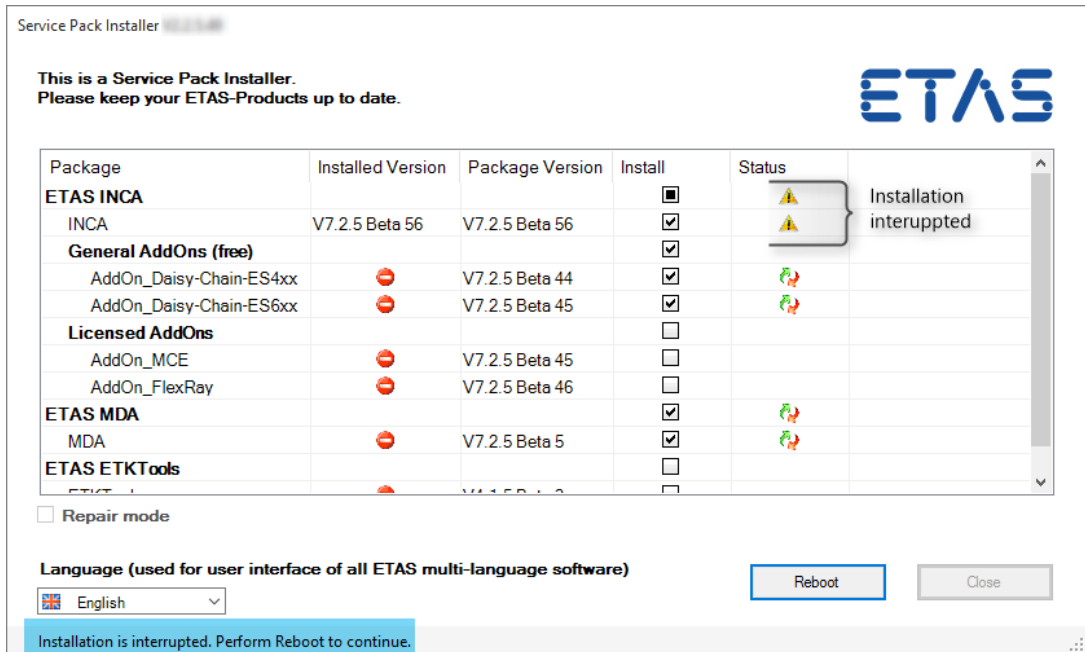


- Also a new icon for the Setup:
- Version of the Service Pack Installation is now displayed in the Title. Note this related to the products shipped with the Service Pack.
- Information during start of Setup_ServicePack that it is running and working. Added Service Pack Installer icon in "Notification Area" for notifying users. On Start: A balloon appears for 2 sec showing Service Pack Installer Loading... On hover over icon: "Service Pack Installer" will be displayed

- New with INCA V7.2 SP5

INCA V7.2.5 and the Setup Service Pack check if 3rd Party Software has to be installed and if a reboot is required before installation of INCA. The 3rd party software will be installed before the INCA (or other product) installation. This solves several reported issues with the INCA Service Pack installation (and included products)

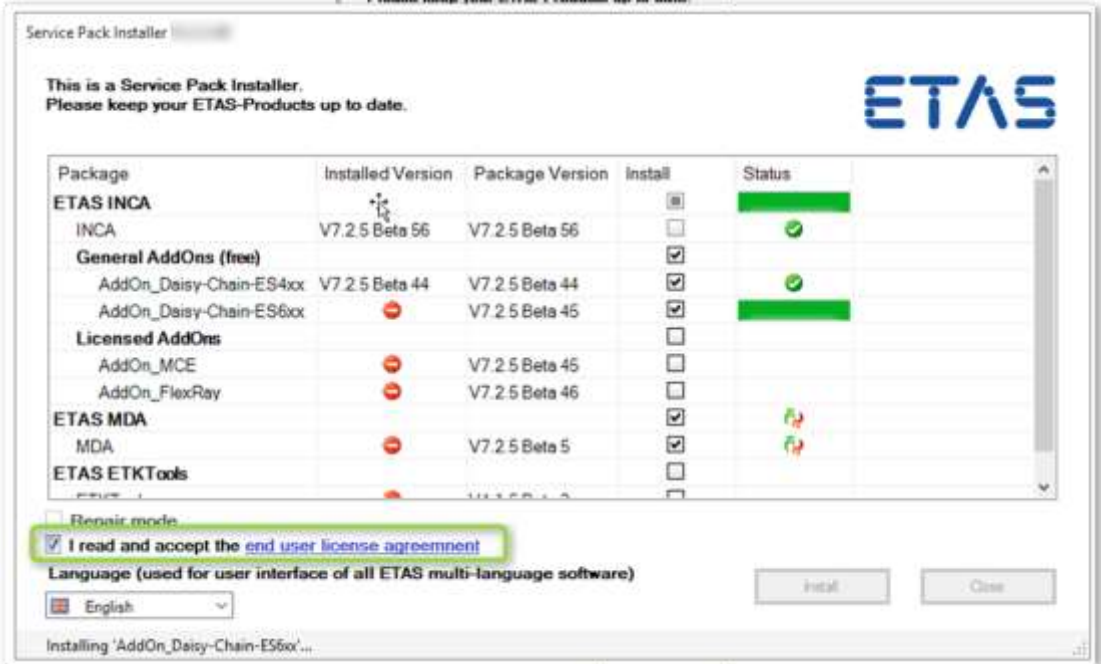
- Individual product installations and Setup Service Pack improved.
- If required, the 3rd party software will be installed before INCA (or other product) installation. This solves several reported issues with the INCA Service Pack installation (and included products)
- In case any installation of the INCA Service Pack requires an immediate reboot after installation, the Service Pack Installer (SPI) will handle this automatically.



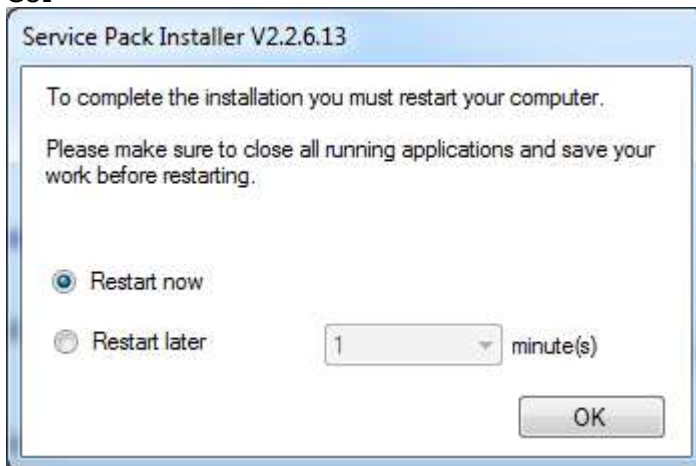
Service Pack installer is interrupted to perform the reboot, indicated in the status bar and icon . After pressing reboot, the system will reboot after a short delay and SPI continues installation automatically after reboot is performed.

- New icon for Setup Service Pack indicating a reboot is required (to avoid installation issues)
- New error codes introduced to handle reboots during automatic installation (it is also highly recommended to execute the reboot before continuing automatic installation – else installation will fail or get incomplete or erroneous)
- Documentation with new behavior and list of all parameters and error codes available
 - See root of Service Pack folder: `Setup_ServicePack.pdf`

- **New with INCA V7.2 SP6**
- EULA (End User License Agreement) has to be accepted before installation, either in the GUI or via command line parameter in case of silent installation.
 - o GUI

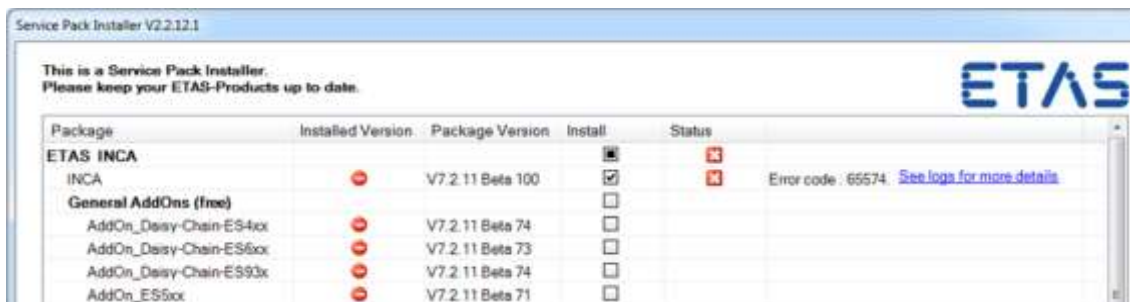


- o Parameter: /EULAAccepted
if not accepted SP-Installer will return error 35
- New path for log files
 - o Log Path: %PROGRAMDATA%\ETAS\SETUP\Logs
 - o Backup Path: %PROGRAMDATA%\ETAS\SETUP\BACKUP
- Delay of reboot – GUI and parameter for silent installation
- o GUI



- o Silent Modus: Parameter /RestartDelayTime=<mins>
- Additional new parameters for silent installation

- /NoRestart Skips any restart request during installation if required
 - /AllowRestart Allows restart of the system between installations if required
- If the installation is interrupted due to a reboot (triggered by other means than INCA Service Pack installation, e.g. manually), the installation will continue after the reboot.
- **New with INCA V7.2 SP11**
- Show Errors in GUI.
In Case of an installation error the Service Pack Installer provides now a link to more detailed information (log-files).



- **New with INCA V7.2 SP13**
- MDA V8.3 support and support of 64 bit applications with the INCA Service Pack Installer
 - Installation can be selected/unselected for installation with the INCA V7.2 Service Pack Installer independently of MDA V7.2. It is also possible to install both MDA versions.

ETAS MDA 7	Installed Version	Package Version	Install	Status
MDA	⊘	V7.2.13 Beta 53	<input type="checkbox"/>	
ETAS MDA 8				
MDA	⊘	V8.3.2 Build 248	<input checked="" type="checkbox"/>	

 - Automatic up- and down-grade is supported (same like all other installations)
 - MDA 8.3 is a Windows 64 bit application
 - Supported Windows Versions are the same like INCA V7.2 or MDA V7.2 but only the 64bit variants
 - Installation on Windows 32 bit variants will fail with error. Recommendation: Do not select MDA V8.3 for installation in the Service Pack Installer in this case.

3 **Service Pack Information - Known Issues - New Features and Improvements**

This chapter describes changes with respect to the previous version of the INCA Service Pack including version history in reverse order.

What's New

See version history below for a rough overview and changes of the Service Pack itself (including ServicePack_Installer.exe) but mainly see the *What's New* and *Release Notes* of each product shipped with the Service Pack

3.1 **Important Note to the Installation valid for each Service Pack**

It is recommended to install, update or down date the INCA V7.2 Service Pack only with help of the Service Pack Installer of each INCA SP (but no manual selection and installation/update of some of the installed products to avoid incompatibilities). Uninstallation only via the Windows control panel – but no manual deletion of files or folders.

- HSP is not included in the INCA Service Pack (exception: INCA 7.2.0 DVD version). Please download HSP from the ETAS download center and update the FW of the used devices.
Important: With the every new INCA Service Pack typically also a higher HSP version has to be used. For the corresponding version see the release notes below. Operation of hardware with former firmware version might cause erroneous operation.
- Each of the included installations (add-ons) of the SP is recommended, if the corresponding HW support is required and/or a former version of the add-on was already installed.
- If the products of the SP are installed via Setup_ServicePack.EXE the products are automatically installed in the recommended order.
(Manual installation: The recommended installation order is like the release order (or order in the SP), if nothing different is specified in the corresponding readme.txt of the add-ons)
- Some installations (like MDF Shell Extension, MIP) cannot be installed automatically, e.g. they require some user input during installation:
 - o If you need to install MDF Shell Extension, please execute
 \MDFShellExtension\MDFShellExtension.exe for manual installation.
- check the ETAS download center for updated versions.
- Details on Service Pack Installation – see also `Setup_ServicePack.pdf` (root of Service Pack folder).

3.2 **Known Issues**

This section describes the general set of known problems of the released version of the INCA Service Pack.

New (solved) known issues of each Service Pack – see also the corresponding section below.

For details and known issues of the included ETAS products and add-ons, check also the corresponding release notes, please.

Problem Number	Title
EHI #519920	<p>INCA/MDA installation fails due to limited disk space during .NET 4.6.x installation</p> <p>Workaround: The installation of .NET 4.6.x requires min. disk space of 4.5GB before installing INCA or MDA itself. If .NET 4.6.x is not installed, this amount of space is required in addition to the min. required space for the ETAS product installation.</p> <p>It is recommended to install .NET 4.6.x before the INCA Service Pack installation. Source: Either from Microsoft or from installation the following share on the INCA 7.2 DVD/SP: 01_INCA_V7.2.n\00_Prod_INCA_72n\Packages\3rdParty\DotNet4.6.x Note: Use the latest .Net 4.6.x version shipped with the INCA Service Pack (x>=2). Reboot the computer after the .NET-installation and before installation of the INCA Service Pack is required.</p>
EHI #550426	<p>ES720 Drive Recorder: Deactivated "Stop Trigger" from INCA V7.2.2 is not respected in INCA V7.1.x</p> <p>ES720 Driver Recorder with INCA V7.1.x software does not respect the stop trigger exported from INCA V7.2 and evaluate it wrongly.</p> <p>Workaround: Remove the "Stop Trigger" condition in INCA V7.2 before the export for the drive recorder.</p>

3.3 INCA V7.2 SP 17

Details on Service Pack Installation – see also [Setup_ServicePack.pdf](#) (root of Service Pack folder).

3.3.1 Content of Service Pack and recommended installation

- INCA V7.2.17

Free general INCA Add-Ons:

- INCA AddOn Daisy-Chain ES4xx V7.2.17
- INCA AddOn Daisy-Chain ES6xx V7.2.17
- INCA AddOn Daisy-Chain ES93x V7.2.17
- INCA AddOn ES5xx V7.2.17
- INCA AddOn ES9xx V7.2.17
- INCA AddOn 3rd Party Hardware V7.2.17
- INCA AddOn eCDM V7.2.17
- INCA AddOn DriveRecorder V7.2.17
- INCA AddOn KID V7.2.17
- INCA AddOn Video Tutorials V7.2.17

Licensed INCA Add-Ons

- INCA AddOn MCE V7.2.17
- INCA AddOn FlexRay V7.2.17
- INCA AddOn LIN V7.2.17
- INCA AddOn QM-Basic V7.2.17
- INCA AddOn EIP V7.2.17
- INCA AddOn SIP V7.2.17
- INCA AddOn ODX V7.2.17
- INCA AddOn CAN-Transmit V7.2.17
- INCA AddOn INCA-VoiceRecorder V7.2.17
- INCA AddOn INCA-TOUCH V7.2.17

Further ETAS Products:

- MDA V7.2.15
- MDA V8.5.1
- ETK Tools V4.1.17
- ETAS License Manager V1.7.5 and
- BOA EBI Distribution Package V2.25.0

Together with the INCA Service Pack the ETAS License Manager (LiMa) is shipped.

All ETAS software products are sharing only one installation of the ETAS LiMa. Therefore each product installation installs LiMa only if there is an older or no version available on the target computer. Another ETAS software product might update LiMa to a succeeding version.

The same is valid for the BOA EBI Distribution Package.

- Setup Service Pack V2.3.1 (not installed)

Shipped with the INCA Service Pack, but manual installation required:

- INCA-MIP V7.2.17 (manual installation, see important notes above)
- MDF Shell Extension V2.0.5 (manual installation, see important notes above)

In addition required and update of HW highly recommended:

- HSP V12.0 or V12.1 (available on the ETAS Download Center)

3.3.2 Known issues and important hints

- After the installation of the INCA Service Pack a reboot of the computer system is required. This is also true for hotfix installations.
- INCA Add-Ons (or INCA **engineering Add-Ons**) which are not part of the INCA Service Pack has to be updated manually to avoid unexpected behavior. Not updated Add-Ons might lead to system errors or wrong results.
- MDA V8 supports only the 64 bit variants of WINDOWS® 8.1 and WINDOWS® 10 (64 bit) Version 1803 or higher but not 32 bit. In case select only MDA V7.2.15 for installation.
- Important hint about **INCA / MDA Support Stop of Windows 7**
Microsoft announced the end of the Extended Support for Windows 7 by January 14, 2020.
Therefore, ETAS discontinued the development and maintenance of Windows 7 support for INCA V7.2 SP16 and higher.
For more details see
 - Maintenance Stop INCA Windows 7 EN.PDF or
 - Maintenance Stop INCA Windows 7 DE.PDFin the folder \Documentation\WhatsNew\of the installation package (ZIP file) or after installation of the INCA Service Pack in **Program-Menu -> ETAS -> INCA 7.2 ServicePack** in the folder \WhatsNew.

3.3.3 Solved known issue and important hints

- See also INCA V7.2 Release Notes

3.3.4 Changed installations, major bug fixes and improvements

Updated with INCA V7.2 SP17

- All but not MDF Shell Extension V2.0.5, not MDA V7.2.15, and not ETK Tools V4.1.17

New shipped INCA V7.2 SP17

- NA

New Features and bug fixes with INCA V7.2 SP17

- NA

3.4 INCA V7.2 SP 16.1

Details on Service Pack Installation – see also [Setup_ServicePack.pdf](#) (root of Service Pack folder).

3.4.1 Content of Service Pack and recommended installation

- INCA V7.2.16
- INCA V7.2.16 HF1

Free general INCA Add-Ons:

- INCA AddOn Daisy-Chain ES4xx V7.2.16
- INCA AddOn Daisy-Chain ES6xx V7.2.16
- INCA AddOn Daisy-Chain ES93x V7.2.16
- INCA AddOn ES5xx V7.2.16
- INCA AddOn ES9xx V7.2.16
- INCA AddOn 3rd Party Hardware V7.2.16
- INCA AddOn eCDM V7.2.16
- INCA AddOn DriveRecorder V7.2.16
- INCA AddOn KID V7.2.16
- INCA AddOn Video Tutorials V7.2.16

Licensed INCA Add-Ons

- INCA AddOn MCE V7.2.16
- INCA AddOn FlexRay V7.2.16
- INCA AddOn LIN V7.2.16
- INCA AddOn QM-Basic V7.2.16
- INCA AddOn EIP V7.2.16
- INCA AddOn SIP V7.2.16
- INCA AddOn ODX V7.2.16
- INCA AddOn CAN-Transmit V7.2.16
- INCA AddOn INCA-VoiceRecorder V7.2.16
- INCA AddOn INCA-TOUCH V7.2.16

Further ETAS Products:

- MDA V7.2.15
- MDA V8.4.1
- ETK Tools V4.1.17
- ETAS License Manager V1.7.4 and

- BOA EBI Distribution Package V2.24.0
Together the INCA Service Pack the ETAS License Manager (LiMa) is shipped. All ETAS software products are sharing only one installation of the ETAS LiMa. Therefore each product installation installs LiMa only if there is an older or no version available on the target computer. Another ETAS software product might update LiMa to a succeeding version.
The same is valid for the BOA EBI Distribution Package.
- Setup Service Pack V2.3.0 (not installed)

Shipped with the INCA Service Pack, but manual installation required:

- INCA-MIP V7.2.16 (manual installation, see important notes above)
- MDF Shell Extension V2.0.5 (manual installation, see important notes above)

In addition required and update of HW highly recommended:

- HSP V11.15 or HSP V12.0 (available on the ETAS Download Center)

3.4.2 Known issues and important hints

- After the installation of the INCA Service Pack a reboot of the computer system is required. This is also true for hotfix installations.
- INCA Add-Ons (or INCA **engineering Add-Ons**) which are not part of the INCA Service Pack has to be updated manually to avoid unexpected behavior. Not updated Add-Ons might lead to system errors or wrong results.
- Important hint about **INCA / MDA Support Stop of Windows 7**
Microsoft announced the end of the Extended Support for Windows 7 by January 14, 2020.
Therefore, ETAS discontinued the development and maintenance of Windows 7 support for INCA V7.2 SP16 and higher.
For more details see
 - Maintenance Stop INCA Windows 7 EN.PDF or
 - Maintenance Stop INCA Windows 7 DE.PDF
 in the folder \Documentation\WhatsNew\ of the installation package (ZIP file) or after installation of the INCA Service Pack in
Program-Menu -> ETAS -> INCA 7.2 ServicePack in the folder \WhatsNew.

3.4.3 Solved known issue and important hints

- See also INCA V7.2 Release Notes

3.4.4 Changed installations, major bug fixes and improvements

Updated with INCA V7.2 SP16.1

- INCA V7.2.16 with INCA V7.2.16 HF1

New shipped INCA V7.2 SP16.1

- NA

New Features and bug fixes with INCA V7.2 SP16.1

- NA

3.5 INCA V7.2 SP 16

Details on Service Pack Installation – see also [Setup_ServicePack.pdf](#) (root of Service Pack folder).

3.5.1 Content of Service Pack and recommended installation

- INCA V7.2.16

Free general INCA Add-Ons:

- INCA AddOn Daisy-Chain ES4xx V7.2.16
- INCA AddOn Daisy-Chain ES6xx V7.2.16
- INCA AddOn Daisy-Chain ES93x V7.2.16
- INCA AddOn ES5xx V7.2.16
- INCA AddOn ES9xx V7.2.16
- INCA AddOn 3rd Party Hardware V7.2.16
- INCA AddOn eCDM V7.2.16
- INCA AddOn DriveRecorder V7.2.16
- INCA AddOn KID V7.2.16
- INCA AddOn Video Tutorials V7.2.16

Licensed INCA Add-Ons

- INCA AddOn MCE V7.2.16
- INCA AddOn FlexRay V7.2.16
- INCA AddOn LIN V7.2.16
- INCA AddOn QM-Basic V7.2.16
- INCA AddOn EIP V7.2.16
- INCA AddOn SIP V7.2.16
- INCA AddOn ODX V7.2.16
- INCA AddOn CAN-Transmit V7.2.16
- INCA AddOn INCA-VoiceRecorder V7.2.16
- INCA AddOn INCA-TOUCH V7.2.16

Further ETAS Products:

- MDA V7.2.15
- MDA V8.4.1
- ETK Tools V4.1.17
- ETAS License Manager V1.7.4 and

- BOA EBI Distribution Package V2.24.0
Together the INCA Service Pack the ETAS License Manager (LiMa) is shipped. All ETAS software products are sharing only one installation of the ETAS LiMa. Therefore each product installation installs LiMa only if there is an older or no version available on the target computer. Another ETAS software product might update LiMa to a succeeding version.
The same is valid for the BOA EBI Distribution Package.
- Setup Service Pack V2.3.0 (not installed)

Shipped with the INCA Service Pack, but manual installation required:

- INCA-MIP V7.2.16 (manual installation, see important notes above)
- MDF Shell Extension V2.0.5 (manual installation, see important notes above)

In addition required and update of HW highly recommended:

- HSP V11.15 or HSP V12.0 (available on the ETAS Download Center)

3.5.2 Known issues and important hints

- After the installation of the INCA Service Pack a reboot of the computer system is required. This is also true for hotfix installations.
- INCA Add-Ons (or INCA **engineering Add-Ons**) which are not part of the INCA Service Pack has to be updated manually to avoid unexpected behavior. Not updated Add-Ons might lead to system errors or wrong results.
- Important hint about **INCA / MDA Support Stop of Windows 7**
Microsoft announced the end of the Extended Support for Windows 7 by January 14, 2020.
Therefore, ETAS discontinued the development and maintenance of Windows 7 support for INCA V7.2 SP16 and higher.
For more details see
 - Maintenance Stop INCA Windows 7 EN.PDF or
 - Maintenance Stop INCA Windows 7 DE.PDFin the folder \Documentation\WhatsNew\of the installation package (ZIP file) or after installation of the INCA Service Pack in **Program-Menu -> ETAS -> INCA 7.2 ServicePack** in the folder \WhatsNew.

3.5.3 Solved known issue and important hints

- See also INCA V7.2 Release Notes

3.5.4 Changed installations, major bug fixes and improvements

Updated with INCA V7.2 SP16

- All but not MDF Shell Extension V2.0.5 and not MDA V7.2.15

New shipped INCA V7.2 SP16

- NA

New Features and bug fixes with INCA V7.2 SP16

- NA

3.6 INCA V7.2 SP 15

Details on Service Pack Installation – see also [Setup_ServicePack.pdf](#) (root of Service Pack folder).

3.6.1 Content of Service Pack and recommended installation

- INCA V7.2.15

Free general INCA Add-Ons:

- INCA AddOn Daisy-Chain ES4xx V7.2.15
- INCA AddOn Daisy-Chain ES6xx V7.2.15
- INCA AddOn Daisy-Chain ES93x V7.2.15
- INCA AddOn ES5xx V7.2.15
- INCA AddOn ES9xx V7.2.15
- INCA AddOn 3rd Party Hardware V7.2.15
- INCA AddOn eCDM V7.2.15
- INCA AddOn DriveRecorder V7.2.15
- INCA AddOn KID V7.2.15
- INCA AddOn Video Tutorials V7.2.15

Licensed INCA Add-Ons

- INCA AddOn MCE V7.2.15
- INCA AddOn FlexRay V7.2.15
- INCA AddOn LIN V7.2.15
- INCA AddOn QM-Basic V7.2.15
- INCA AddOn EIP V7.2.15
- INCA AddOn SIP V7.2.15
- INCA AddOn ODX V7.2.15
- INCA AddOn CAN-Transmit V7.2.15
- INCA AddOn INCA-VoiceRecorder V7.2.15
- INCA AddOn INCA-TOUCH V7.2.15

Further ETAS Products:

- MDA V7.2.15
- MDA V8.4.0
- ETK Tools V4.1.16

- ETAS License Manager V1.7.3 and
- BOA EBI Distribution Package V2.24.0
Together the INCA Service Pack the ETAS License Manager (LiMa) is shipped.
All ETAS software products are sharing only one installation of the ETAS LiMa. Therefore each product installation installs LiMa only if there is an older or no version available on the target computer. Another ETAS software product might update LiMa to a succeeding version.
The same is valid for the BOA EBI Distribution Package.
- Setup Service Pack V2.2.14 (not installed)

Shipped with the INCA Service Pack, but manual installation required:

- INCA-MIP V7.2.15 (manual installation, see important notes above)
- MDF Shell Extension V2.0.5 (manual installation, see important notes above)

In addition required and update of HW highly recommended:

- HSP V11.15 (available on the ETAS Download Center)

3.6.2 Known issues and important hints

- After the installation of the INCA Service Pack a reboot of the computer system is required. This is also true for hotfix installations.
- INCA Add-Ons (or INCA **engineering Add-Ons**) which are not part of the INCA Service Pack has to be updated manually to avoid unexpected behavior. Not updated Add-Ons might lead to system errors or wrong results.
- Important hint about **change of the Grace Mode of ETAS Software products** with LIMA V1.7.1 shipped with INCA V7.2.13 and higher (introduced in Q2/2019). It affects all Software Products, providing Grace Mode, namely: ASCET, INCA, INCA-FLOW, INTECRIO, INTECRIO-RLINK, ISOLAR-EVE, MDA, SCODE-CONGRA, SCODE-ANALYZER and their Add-ons
For more details see
 - Change of Grace Mode 2019_03_NE.pdf or
 - Change of Grace Mode 2019_03_DE.pdfin the folder \Documentation\WhatsNew\of the installation package (ZIP file) or after installation of the INCA Service Pack in **Program-Menu -> ETAS -> INCA 7.2 ServicePack** in the folder \WhatsNew.
- Important hint about **INCA / MDA Support Stop of Windows 7**
Microsoft announced the end of the Extended Support for Windows 7 by January 14, 2020.
Therefore, ETAS will discontinue the development and maintenance of Windows 7 support for INCA and MDA as following:
 - Versions and service packs of INCA and MDA, released after January 14, 2020, will no longer support Windows 7.For more details see
 - Maintenance Stop INCA Windows 7 EN.PDF or
 - Maintenance Stop INCA Windows 7 DE.PDFin the folder \Documentation\WhatsNew\of the installation package (ZIP file) or after installation of the INCA Service Pack in **Program-Menu -> ETAS -> INCA 7.2 ServicePack** in the folder \WhatsNew.

3.6.3 Solved known issue and important hints

- See also INCA V7.2 Release Notes
- **Important: The new ETAS Safety Advice** is available with the following additional languages: Belarussian, Russian, Ukrainian, Vietnamese, Thai, Traditional Chinese, Indonesian, and Hindi. Please read it carefully. The ETAS Safety Advice is displayed during start of INCA (Disclaimer) and it is available in `ETAS_Safety_Advice.pdf` in the folder `\Documentation\ReleaseNotes\` of the installation package (ZIP file) or after installation of the INCA Service Pack in **Program-Menu -> ETAS -> INCA 7.2 ServicePack** in the folder `\ReleaseNotes`. (see also EHI-Call #618563)

3.6.4 Changed installations, major bug fixes and improvements

Updated with INCA V7.2 SP15

- All but not MDF Shell Extension V2.0.5

New shipped INCA V7.2 SP15

- NA

New Features and bug fixes with INCA V7.2 SP15

- ETAS License Manager (LiMa):
The new LiMa V1.7.3 provides the possibility to manage licenses via command line. The most important enhancements are:
 - Borrow licenses
 - Return licenses
 - Activate / configure / deactivate Auto-Borrow for licenses
 - Backup and restore the license status
 - This is possible for single features (e.g. one single INCA Add-on) or on product level (e.g. INCA and all add-ons)
 - This functionality is available for all products using LiMa V1.7.3.Borrow and return licenses is also available in the GUI of LiMa. However, with two small batch-files with the corresponding command lines, there is now a one-click solution available to borrow or return licenses with a predefined duration. More information is available in `LiMa_ManageLicencesCMD_EN.pdf` in the folder `\Documentation\Manuals\` of the installation package (ZIP file) or after installation of the INCA Service Pack in **Program-Menu -> ETAS -> INCA 7.2 ServicePack** in the folder `\Manuals`.

3.7 INCA V7.2 SP 14.1

Details on Service Pack Installation – see also [Setup_ServicePack.pdf](#) (root of Service Pack folder).

3.7.1 Content of Service Pack and recommended installation

- INCA V7.2.14
- INCA V7.2.14 HF1

Free general INCA Add-Ons:

- INCA AddOn Daisy-Chain ES4xx V7.2.14
- INCA AddOn Daisy-Chain ES6xx V7.2.14
- INCA AddOn Daisy-Chain ES93x V7.2.14
- INCA AddOn ES5xx V7.2.14
- INCA AddOn ES9xx V7.2.14
- INCA AddOn 3rd Party Hardware V7.2.14
- INCA AddOn eCDM V7.2.14
- INCA AddOn DriveRecorder V7.2.14
- INCA AddOn KID V7.2.14
- INCA AddOn Video Tutorials V7.2.14

Licensed INCA Add-Ons

- INCA AddOn MCE V7.2.14
- INCA AddOn FlexRay V7.2.14
- INCA AddOn LIN V7.2.14
- INCA AddOn QM-Basic V7.2.14
- INCA AddOn EIP V7.2.14
- INCA AddOn SIP V7.2.14
- INCA AddOn ODX V7.2.14
- INCA AddOn CAN-Transmit V7.2.14
- INCA AddOn INCA-VoiceRecorder V7.2.14
- INCA AddOn INCA-TOUCH V7.2.14

Further ETAS Products:

- MDA V7.2.14
- MDA V8.3.4 Build 324 (HF1)
- ETK Tools V4.1.15
- ETAS License Manager V1.7.2 and
- BOA EBI Distribution Package V2.23.0

Together the INCA Service Pack the ETAS License Manager (LiMa) is shipped.

All ETAS software products are sharing only one installation of the ETAS LiMa. Therefore each product installation installs LiMa only if there is an older or no version available on the target computer. Another ETAS software product might update LiMa to a succeeding

version.

The same is valid for the BOA EBI Distribution Package.

- Setup Service Pack V2.2.14 (not installed)

Shipped with the INCA Service Pack, but manual installation required:

- INCA-MIP V7.2.14 (manual installation, see important notes above)
- MDF Shell Extension V2.0.5 (manual installation, see important notes above)

In addition required and update of HW highly recommended:

- HSP V11.14.0 (available on the ETAS Download Center)

3.7.2 Known issues and important hints

- After the installation of the INCA Service Pack a reboot of the computer system is required. This is also true for hotfix installations.
- INCA Add-Ons (or INCA **engineering Add-Ons**) which are not part of the INCA Service Pack has to be updated manually to avoid unexpected behavior. Not updated Add-Ons might lead to system errors or wrong results.
- Important hint about **change of the Grace Mode of ETAS Software products**. This change will come with LIMA V1.7.1 scheduled for Q2/2019 and will affect all Software Products, providing Grace Mode, namely: ASCET, INCA, INCA-FLOW, INTECRIO, INTECRIO-RLINK, ISOLAR-EVE, MDA, SCODE-CONGRA, SCODE-ANALYZER and their Add-ons
For more details see
 - Change of Grace Mode 2019_03_NE.pdf or
 - Change of Grace Mode 2019_03_DE.pdfin the folder \Documentation\WhatsNew\of the installation package (ZIP file) or after installation of the INCA Service Pack in **Program-Menu -> ETAS -> INCA 7.2 ServicePack** in the folder \WhatsNew.
Note: This will affect INCA V7.2.13 and higher.
- Important hint about **INCA / MDA Support Stop of Windows 7**
Microsoft announced the end of the Extended Support for Windows 7 by January 14, 2020.
Therefore, ETAS will discontinue the development and maintenance of Windows 7 support for INCA and MDA as following:
 - Versions and service packs of INCA and MDA, released after January 14, 2020, will no longer support Windows 7.For more details see
 - Maintenance Stop INCA Windows 7 EN.PDF or
 - Maintenance Stop INCA Windows 7 DE.PDFin the folder \Documentation\WhatsNew\of the installation package (ZIP file) or after installation of the INCA Service Pack in **Program-Menu -> ETAS -> INCA 7.2 ServicePack** in the folder \WhatsNew.
- Important information to the ES886.1 module
The ES886.1 module is PREPARED for Ethernet monitoring. The functionality will be delivered in a subsequent HSP package and INCA Service Pack.

3.7.3 Solved known issue and important hints

- See also INCA V7.2 Release Notes
- **Important: The new ETAS Safety Advice** is available with the following additional languages: Belarussian, Russian, Ukrainian, Vietnamese, Thai, Traditional Chinese, Indonesian, and Hindi. Please read it carefully. The ETAS Safety Advice is displayed during start of INCA (Disclaimer) and it is available in `ETAS_Safety_Advice.pdf` in the folder `\Documentation\ReleaseNotes\` of the installation package (ZIP file) or after installation of the INCA Service Pack in **Program-Menu -> ETAS -> INCA 7.2 ServicePack** in the folder `\ReleaseNotes`. (see also EHI-Call #618563)

3.7.4 Changed installations, major bug fixes and improvements

Updated with INCA V7.2 SP14.1

- INCA V7.2.14 with INCA V7.2.14 HF1
- MDA V8.3.4 Build 324 (HF1)

New shipped INCA V7.2 SP14.1

- NA

New Features and bug fixes with INCA V7.2 SP14.1

- NA

3.8 INCA V7.2 SP 14

Details on Service Pack Installation – see also `Setup_ServicePack.pdf` (root of Service Pack folder).

3.8.1 Content of Service Pack and recommended installation

- INCA V7.2.14
- Free general INCA Add-Ons:
- INCA AddOn Daisy-Chain ES4xx V7.2.14
 - INCA AddOn Daisy-Chain ES6xx V7.2.14
 - INCA AddOn Daisy-Chain ES93x V7.2.14
 - INCA AddOn ES5xx V7.2.14
 - INCA AddOn ES9xx V7.2.14
 - INCA AddOn 3rd Party Hardware V7.2.14
 - INCA AddOn eCDM V7.2.14

- INCA AddOn DriveRecorder V7.2.14
- INCA AddOn KID V7.2.14
- INCA AddOn Video Tutorials V7.2.14

Licensed INCA Add-Ons

- INCA AddOn MCE V7.2.14
- INCA AddOn FlexRay V7.2.14
- INCA AddOn LIN V7.2.14
- INCA AddOn QM-Basic V7.2.14
- INCA AddOn EIP V7.2.14
- INCA AddOn SIP V7.2.14
- INCA AddOn ODX V7.2.14
- INCA AddOn CAN-Transmit V7.2.14
- INCA AddOn INCA-VoiceRecorder V7.2.14
- INCA AddOn INCA-TOUCH V7.2.14

Further ETAS Products:

- MDA V7.2.14
- MDA V8.3.3 Build 203 (HF1)
- ETK Tools V4.1.15
- ETAS License Manager V1.7.2 and
- BOA EBI Distribution Package V2.23.0

Together the INCA Service Pack the ETAS License Manager (LiMa) is shipped.

All ETAS software products are sharing only one installation of the ETAS LiMa. Therefore each product installation installs LiMa only if there is an older or no version available on the target computer. Another ETAS software product might update LiMa to a succeeding version.

The same is valid for the BOA EBI Distribution Package.

- Setup Service Pack V2.2.14 (not installed)

Shipped with the INCA Service Pack, but manual installation required:

- INCA-MIP V7.2.14 (manual installation, see important notes above)
- MDF Shell Extension V2.0.5 (manual installation, see important notes above)

In addition required and update of HW highly recommended:

- HSP V11.14.0 (available on the ETAS Download Center)

3.8.2 Known issues and important hints

- After the installation of the INCA Service Pack a reboot of the computer system is required. This is also true for hotfix installations.
- INCA Add-Ons (or INCA **engineering Add-Ons**) which are not part of the INCA Service Pack has to be updated manually to avoid unexpected behavior. Not updated Add-Ons might lead to system errors or wrong results.

- Important hint about **change of the Grace Mode of ETAS Software products**. This change will come with LIMA V1.7.1 scheduled for Q2/2019 and will affect all Software Products, providing Grace Mode, namely: ASCET, INCA, INCA-FLOW, INTECRIO, INTECRIO-RLINK, ISOLAR-EVE, MDA, SCODE-CONGRA, SCODE-ANALYZER and their Add-ons
For more details see
 - Change of Grace Mode 2019_03_NE.pdf or
 - Change of Grace Mode 2019_03_DE.pdfin the folder \Documentation\WhatsNew\of the installation package (ZIP file) or after installation of the INCA Service Pack in **Program-Menu -> ETAS -> INCA 7.2 ServicePack** in the folder \WhatsNew.
Note: This will affect INCA V7.2.13 and higher.
- Important hint about **INCA / MDA Support Stop of Windows 7**
Microsoft announced the end of the Extended Support for Windows 7 by January 14, 2020.
Therefore, ETAS will discontinue the development and maintenance of Windows 7 support for INCA and MDA as following:
 - Versions and service packs of INCA and MDA, released after January 14, 2020, will no longer support Windows 7.For more details see
 - Maintenance Stop INCA Windows 7 EN.PDF or
 - Maintenance Stop INCA Windows 7 DE.PDFin the folder \Documentation\WhatsNew\of the installation package (ZIP file) or after installation of the INCA Service Pack in **Program-Menu -> ETAS -> INCA 7.2 ServicePack** in the folder \WhatsNew.
- Important information to the ES886.1 module
The ES886.1 module is PREPARED for Ethernet monitoring. The functionality will be delivered in a subsequent HSP package and INCA Service Pack.

3.8.3 Solved known issue and important hints

- See also INCA V7.2 Release Notes
- **Important: The new ETAS Safety Advice** is available with the following additional languages: Belarussian, Russian, Ukrainian, Vietnamese, Thai, Traditional Chinese, Indonesian, and Hindi. Please read it carefully.
The ETAS Safety Advice is displayed during start of INCA (Disclaimer) and it is available in ETAS_Safety_Advice.pdf in the folder \Documentation\ReleaseNotes\of the installation package (ZIP file) or after installation of the INCA Service Pack in **Program-Menu -> ETAS -> INCA 7.2 ServicePack** in the folder \ReleaseNotes.
(see also EHI-Call #618563)

3.8.4 Changed installations, major bug fixes and improvements

Updated with INCA V7.2 SP14

- All but not MDF Shell Extension V2.0.5

New shipped INCA V7.2 SP14

- NA

New Features and bug fixes with INCA V7.2 SP14

- NA

3.9 INCA V7.2 SP 13.2

Details on Service Pack Installation – see also [Setup_ServicePack.pdf](#) (root of Service Pack folder).

3.9.1 Content of Service Pack and recommended installation

- INCA V7.2.13 Build 178
 - INCA V7.2.13 HF 2
- Free general INCA Add-Ons:
- INCA AddOn Daisy-Chain ES4xx V7.2.13
 - INCA AddOn Daisy-Chain ES6xx V7.2.13
 - INCA AddOn Daisy-Chain ES93x V7.2.13
 - INCA AddOn ES5xx V7.2.13
 - INCA AddOn ES9xx V7.2.13
 - INCA AddOn 3rd Party Hardware V7.2.13
 - INCA AddOn eCDM V7.2.13
 - INCA AddOn DriveRecorder V7.2.13
 - INCA AddOn KID V7.2.13
 - INCA AddOn Video Tutorials V7.2.13

Licensed INCA Add-Ons

- INCA AddOn MCE V7.2.13
- INCA AddOn FlexRay V7.2.13
- INCA AddOn LIN V7.2.13
- INCA AddOn QM-Basic V7.2.13
- INCA AddOn EIP V7.2.13
- INCA AddOn SIP V7.2.13
- INCA AddOn ODX V7.2.13
- INCA AddOn CAN-Transmit V7.2.13
- INCA AddOn INCA-VoiceRecorder V7.2.13
- INCA AddOn INCA-TOUCH V7.2.13

Further ETAS Products:

- MDA V7.2.13 Build 157
- MDA V8.3.3
- ETK Tools V4.1.14
- ETAS License Manager V1.7.1 and
- BOA EBI Distribution Package V2.22.0
Together the INCA Service Pack the ETAS License Manager (LiMa) is shipped.
All ETAS software products are sharing only one installation of the ETAS LiMa. Therefore each product installation installs LiMa only if there is an older or no version available on the target computer. Another ETAS software product might update LiMa to a succeeding version.
The same is valid for the BOA EBI Distribution Package.
- Setup Service Pack V2.2.13 (not installed)

Shipped with the INCA Service Pack, but manual installation required:

- INCA-MIP V7.2.13 (manual installation, see important notes above)
- MDF Shell Extension V2.0.5 (manual installation, see important notes above)

In addition required and update of HW highly recommended:

- HSP V11.13.0 (available on the ETAS Download Center)

3.9.2 Known issues and important hints

- After the installation of the INCA Service Pack a reboot of the computer system is required. This is also true for hotfix installations.
- INCA Add-Ons (or INCA **engineering Add-Ons**) which are not part of the INCA Service Pack has to be updated manually to avoid unexpected behavior. Not updated Add-Ons might lead to system errors or wrong results.
- Important hint about **change of the Grace Mode of ETAS Software products**. This change will come with LIMA V1.7.1 scheduled for Q2/2019 and will affect all Software Products, providing Grace Mode, namely:
ASCET, INCA, INCA-FLOW, INTECRIO, INTECRIO-RLINK, ISOLAR-EVE, MDA, SCODE-CONGRA, SCODE-ANALYZER and their Add-ons
For more details see
 - Change of Grace Mode 2019_03_NE.pdf or
 - Change of Grace Mode 2019_03_DE.pdf
 in the folder \Documentation\WhatsNew\of the installation package (ZIP file) or after installation of the INCA Service Pack in **Program-Menu -> ETAS -> INCA 7.2 ServicePack** in the folder \WhatsNew.
Note: This will affect INCA V7.2.13 and higher.
- Important hint about **INCA / MDA Support Stop of Windows 7**
Microsoft announced the end of the Extended Support for Windows 7 by January 14, 2020.
Therefore, ETAS will discontinue the development and maintenance of Windows 7 support for INCA and MDA as following:
 - Versions and service packs of INCA and MDA, released after January 14, 2020, will no longer support Windows 7.

For more details see

- Maintenance Stop INCA Windows 7 EN.PDF or
- Maintenance Stop INCA Windows 7 DE.PDF

in the folder \Documentation\WhatsNew\ of the installation package (ZIP file)
or after installation of the INCA Service Pack in

Program-Menu -> ETAS -> INCA 7.2 ServicePack in the folder \WhatsNew.

3.9.3 Solved known issues and important hints

- **Important: The new ETAS Safety Advice** is available with the following additional languages: Belarussian, Russian, Ukrainian, Vietnamese, Thai, Traditional Chinese, Indonesian, and Hindi. Please read it carefully. The ETAS Safety Advice is displayed during start of INCA (Disclaimer) and it is available in ETAS_Safety_Advice.pdf in the folder \Documentation\ReleaseNotes\ of the installation package (ZIP file) or after installation of the INCA Service Pack in **Program-Menu -> ETAS -> INCA 7.2 ServicePack** in the folder \ReleaseNotes. (see also EHI-Call #618563)

- #619777 INCA V7.2 SP13.1 with INCA V7.2.13 HF1: Not possible to uninstall INCA V7.2.13 with INCA V7.2.13 HF1 if path to the original installation changed or installation sources no longer available. In case, uninstallation will ask for the 1.msi file and path has to be selected manually
(INCA_V7.2_SP13.1\01_INCA_V7.2.13\00_Prod_INCA_7213\Packages\INCA\1.msi). If not available uninstallation will be cancelled.
Workaround: Keep the INCA V7.2 SP13.1 installation available on the same path (like during installation) until INCA V7.2 SP13.1 is uninstalled or updated to another INCA V7.2 Service Pack.

Note: To solve this issue, INCA V7.2.13 needs to be rebuilt and it is not possible to install INCA V7.2.13 HF2 manually on INCA V7.2.13 Build 159 (shipped with INCA V7.2 SP13 and SP13.1).

- #605100 INCA - INCA Service Pack Installer: Repair not working. Deleted files not restored. Repair Button might have no effect. Repair of the installed INCA V7.2 works not in all cases. Workaround: If a repair of INCA is needed, uninstall INCA and install the INCA Service Pack anew
OR
install (update or down date) another INCA V7.2 Service Pack).
Note: This issue is solved with INCA V7.2 SP13.
- See also INCA V7.2 Release Notes

3.9.4 Changed installations, major bug fixes and improvements

Updated with INCA V7.2 SP13.2

- INCA V7.2.13 Build 178 and INCA V7.2.13 HF2

- All INCA V7.2.13 Add-Ons rebuild with same content to solve the uninstallation issue of SP13.1 (see section *solved known issues* above for details)
- Already updated with SP13.1:
 - o MDA V7.2.13 Build 157 (same like Build 155 but with updated ETAS Safety Advice)
 - o MDA V8.3.3

New shipped INCA V7.2 SP13.2

- MDA V8.3.2 Build 248 (HF1) was new shipped with INCA V7.2 SP13

New Features and bug fixes with INCA V7.2 SP13.1

- See section *New Features and bug fixes with INCA V7.2 SP13*
- ETAS Safety Advice (PDF) updated. Details see above.

3.10 INCA V7.2 SP 13.1

Details on Service Pack Installation – see also [Setup_ServicePack.pdf](#) (root of Service Pack folder).

3.10.1 Content of Service Pack and recommended installation

- INCA V7.2.13
 - INCA V7.2.13 HF 1
- Free general INCA Add-Ons:
- INCA AddOn Daisy-Chain ES4xx V7.2.13
 - INCA AddOn Daisy-Chain ES6xx V7.2.13
 - INCA AddOn Daisy-Chain ES93x V7.2.13
 - INCA AddOn ES5xx V7.2.13
 - INCA AddOn ES9xx V7.2.13
 - INCA AddOn 3rd Party Hardware V7.2.13
 - INCA AddOn eCDM V7.2.13
 - INCA AddOn DriveRecorder V7.2.13
 - INCA AddOn KID V7.2.13
 - INCA AddOn Video Tutorials V7.2.13
- Licensed INCA Add-Ons
- INCA AddOn MCE V7.2.13
 - INCA AddOn FlexRay V7.2.13
 - INCA AddOn LIN V7.2.13
 - INCA AddOn QM-Basic V7.2.13

- INCA AddOn EIP V7.2.13
- INCA AddOn SIP V7.2.13
- INCA AddOn ODX V7.2.13
- INCA AddOn CAN-Transmit V7.2.13
- INCA AddOn INCA-VoiceRecorder V7.2.13
- INCA AddOn INCA-TOUCH V7.2.13

Further ETAS Products:

- MDA V7.2.13 Build 157
- MDA V8.3.3
- ETK Tools V4.1.14
- ETAS License Manager V1.7.1 and
- BOA EBI Distribution Package V2.22.0

Together the INCA Service Pack the ETAS License Manager (LiMa) is shipped.

All ETAS software products are sharing only one installation of the ETAS LiMa. Therefore each product installation installs LiMa only if there is an older or no version available on the target computer. Another ETAS software product might update LiMa to a succeeding version.

The same is valid for the BOA EBI Distribution Package.

- Setup Service Pack V2.2.13 (not installed)

Shipped with the INCA Service Pack, but manual installation required:

- INCA-MIP V7.2.13 (manual installation, see important notes above)
- MDF Shell Extension V2.0.5 (manual installation, see important notes above)

In addition required and update of HW highly recommended:

- HSP V11.13.0 (available on the ETAS Download Center)

3.10.2 Known issues and important hints

- After the installation of the INCA Service Pack a reboot of the computer system is required. This is also true for hotfix installations.
- INCA Add-Ons (or INCA **engineering Add-Ons**) which are not part of the INCA Service Pack has to be updated manually to avoid unexpected behavior. Not updated Add-Ons might lead to system errors or wrong results.
- Important hint about **change of the Grace Mode of ETAS Software products**. This change will come with LIMA V1.7.1 scheduled for Q2/2019 and will affect all Software Products, providing Grace Mode, namely: ASCET, INCA, INCA-FLOW, INTECRIO, INTECRIO-RLINK, ISOLAR-EVE, MDA, SCODE-CONGRA, SCODE-ANALYZER and their Add-ons
For more details see
 - Change of Grace Mode 2019_03_NE.pdf or
 - Change of Grace Mode 2019_03_DE.pdf
 in the folder \Documentation\WhatsNew\of the installation package (ZIP file) or after installation of the INCA Service Pack in

Program-Menu -> ETAS -> INCA 7.2 ServicePack in the folder \WhatsNew.

Note: This will affect INCA V7.2.13 and higher.

- Important hint about **INCA / MDA Support Stop of Windows 7**
Microsoft announced the end of the Extended Support for Windows 7 by January 14, 2020.
Therefore, ETAS will discontinue the development and maintenance of Windows 7 support for INCA and MDA as following:
 - Versions and service packs of INCA and MDA, released after January 14, 2020, will no longer support Windows 7.

For more details see

- Maintenance Stop INCA Windows 7 EN.PDF or

- Maintenance Stop INCA Windows 7 DE.PDF

in the folder \Documentation\WhatsNew\of the installation package (ZIP file)
or after installation of the INCA Service Pack in

Program-Menu -> ETAS -> INCA 7.2 ServicePack in the folder \WhatsNew.

- Important information to the ES886.1 module
The ES886.1 module is PREPARED for Ethernet monitoring. The functionality will be delivered in a subsequent HSP package and INCA Service Pack.

3.10.3 Solved known issue and important hints

- **Important: The new ETAS Safety Advice** is available with the following additional languages: Belarussian, Russian, Ukrainian, Vietnamese, Thai, Traditional Chinese, Indonesian, and Hindi. Please read it carefully.
The ETAS Safety Advice is displayed during start of INCA (Disclaimer) and it is available in ETAS_Safety_Advice.pdf in the folder \Documentation\ReleaseNotes\of the installation package (ZIP file) or after installation of the INCA Service Pack in **Program-Menu -> ETAS -> INCA 7.2 ServicePack** in the folder \ReleaseNotes. (see also EHI-Call #618563)
- #605100 INCA - INCA Service Pack Installer: Repair not working. Deleted files not restored. Repair Button might have no effect.
Repair of the installed INCA V7.2 works not in all cases.
Workaround: If a repair of INCA is needed, uninstall INCA and install the INCA Service Pack anew
OR
install (update or down date) another INCA V7.2 Service Pack).
Note: This issue is solved with INCA V7.2 SP13.
- See also INCA V7.2 Release Notes

3.10.4 Changed installations, major bug fixes and improvements

Updated with INCA V7.2 SP13.1

- INCA V7.2.13 with INCA V7.2.13 HF1
- MDA V7.2.13 Build 157 (same like Build 155 but with updated ETAS Safety Advice)
- MDA V8.3.3

New shipped INCA V7.2 SP13.1

- MDA V8.3.2 Build 248 (HF1) was new shipped with INCA V7.2 SP13

New Features and bug fixes with INCA V7.2 SP13.1

- See section *New Features and bug fixes with INCA V7.2 SP13*
- ETAS Safety Advice (PDF) updated. Details see above.

3.11 INCA V7.2 SP 13

Details on Service Pack Installation – see also [Setup_ServicePack.pdf](#) (root of Service Pack folder).

3.11.1 Content of Service Pack and recommended installation

- INCA V7.2.13

Free general INCA Add-Ons:

- INCA AddOn Daisy-Chain ES4xx V7.2.13
- INCA AddOn Daisy-Chain ES6xx V7.2.13
- INCA AddOn Daisy-Chain ES93x V7.2.13
- INCA AddOn ES5xx V7.2.13
- INCA AddOn ES9xx V7.2.13
- INCA AddOn 3rd Party Hardware V7.2.13
- INCA AddOn eCDM V7.2.13
- INCA AddOn DriveRecorder V7.2.13
- INCA AddOn KID V7.2.13
- INCA AddOn Video Tutorials V7.2.13

Licensed INCA Add-Ons

- INCA AddOn MCE V7.2.13
- INCA AddOn FlexRay V7.2.13
- INCA AddOn LIN V7.2.13
- INCA AddOn QM-Basic V7.2.13
- INCA AddOn EIP V7.2.13
- INCA AddOn SIP V7.2.13
- INCA AddOn ODX V7.2.13
- INCA AddOn CAN-Transmit V7.2.13
- INCA AddOn INCA-VoiceRecorder V7.2.13
- INCA AddOn INCA-TOUCH V7.2.13

Further ETAS Products:

- MDA V7.2.13 Build 155
- MDA V8.3.2 Build 248 (HF1)
- ETK Tools V4.1.14
- ETAS License Manager V1.7.1 and
- BOA EBI Distribution Package V2.22.0
Together the INCA Service Pack the ETAS License Manager (LiMa) is shipped.
All ETAS software products are sharing only one installation of the ETAS LiMa. Therefore each product installation installs LiMa only if there is an older or no version available on the target computer. Another ETAS software product might update LiMa to a succeeding version.
The same is valid for the BOA EBI Distribution Package.
- Setup Service Pack V2.2.13 (not installed)

Shipped with the INCA Service Pack, but manual installation required:

- INCA-MIP V7.2.13 (manual installation, see important notes above)
- MDF Shell Extension V2.0.5 (manual installation, see important notes above)

In addition required and update of HW highly recommended:

- HSP V11.13.0 (available on the ETAS Download Center)

3.11.2 Known issues and important hints

- After the installation of the INCA Service Pack a reboot of the computer system is required. This is also true for hotfix installations.
- INCA Add-Ons (or INCA **engineering Add-Ons**) which are not part of the INCA Service Pack has to be updated manually to avoid unexpected behavior. Not updated Add-Ons might lead to system errors or wrong results.
- Important hint about **change of the Grace Mode of ETAS Software products**. This change will come with LIMA V1.7.1 scheduled for Q2/2019 and will affect all Software Products, providing Grace Mode, namely:
ASCET, INCA, INCA-FLOW, INTECRIO, INTECRIO-RLINK, ISOLAR-EVE, MDA, SCODE-CONGRA, SCODE-ANALYZER and their Add-ons
For more details see
 - Change of Grace Mode 2019_03_NE.pdf or
 - Change of Grace Mode 2019_03_DE.pdf
 in the folder \Documentation\WhatsNew\of the installation package (ZIP file) or after installation of the INCA Service Pack in **Program-Menu -> ETAS -> INCA 7.2 ServicePack** in the folder \WhatsNew.
Note: This will affect INCA V7.2.13 and higher.
- Important hint about **INCA / MDA Support Stop of Windows 7**
Microsoft announced the end of the Extended Support for Windows 7 by January 14, 2020.
Therefore, ETAS will discontinue the development and maintenance of Windows 7 support for INCA and MDA as following:
 - Versions and service packs of INCA and MDA, released after January 14, 2020, will no longer support Windows 7.

For more details see

- Maintenance Stop INCA Windows 7 EN.PDF or
- Maintenance Stop INCA Windows 7 DE.PDF

in the folder \Documentation\WhatsNew\ of the installation package (ZIP file) or after installation of the INCA Service Pack in

Program-Menu -> ETAS -> INCA 7.2 ServicePack in the folder \WhatsNew.

- Important information to the ES886.1 module
The ES886.1 module is PREPARED for Ethernet monitoring. The functionality will be delivered in a subsequent HSP package and INCA Service Pack.

3.11.3 Solved known issue and important hints

- #605100 INCA - INCA Service Pack Installer: Repair not working. Deleted files not restored. Repair Button might have no effect.
Repair of the installed INCA V7.2 works not in all cases.
Workaround: If a repair of INCA is needed, uninstall INCA and install the INCA Service Pack anew
OR
install (update or down date) another INCA V7.2 Service Pack).
Note: This issue is solved with INCA V7.2 SP13.
- See also INCA V7.2 Release Notes

3.11.4 Changed installations, major bug fixes and improvements

Updated with INCA V7.2 SP13





- All but not MDF Shell Extension V2.0.5

New shipped INCA V7.2 SP13

- MDA V8.3.2 Build 248 (HF1)

New Features and bug fixes with INCA V7.2 SP13

- Support of 64 bit ETAS software products with the INCA Service Pack Installer
- MDA V8.3 support
 - o Installation can be selected/unselected for installation with the INCA V7.2 Service Pack Installer independently of MDA V7.2. It is also possible to install both MDA versions.

ETAS MDA 7			<input type="checkbox"/>	
MDA		V7.2.13 Beta 53	<input type="checkbox"/>	
ETAS MDA 8			<input checked="" type="checkbox"/>	
MDA		V8.3.2 Build 248	<input checked="" type="checkbox"/>	

- o Automatic up- and down-grade is supported (same like all other installations)
- o MDA 8.3 is a Windows 64 bit application
 - Supported Windows Versions are the same like INCA V7.2 or MDA V7.2 but only the 64bit variants
 - Installation on Windows 32 bit variants will fail with error.
Recommendation: Do not select MDA V8.3 for installation in the Service Pack Installer in this case.

3.12 INCA V7.2 SP 12.2

Details on Service Pack Installation – see also [Setup_ServicePack.pdf](#) (root of Service Pack folder).

3.12.1 Content of Service Pack and recommended installation

- INCA V7.2.12
- INCA V7.2.12 HF 2

Free general INCA Add-Ons:

- INCA AddOn Daisy-Chain ES4xx V7.2.12
- INCA AddOn Daisy-Chain ES6xx V7.2.12
- INCA AddOn Daisy-Chain ES93x V7.2.12
- INCA AddOn ES5xx V7.2.12
- INCA AddOn ES9xx V7.2.12
- INCA AddOn 3rd Party Hardware V7.2.12
- INCA AddOn eCDM V7.2.12
- INCA AddOn DriveRecorder V7.2.12
- INCA AddOn KID V7.2.12
- INCA AddOn Video Tutorials V7.2.12

Licensed INCA Add-Ons

- INCA AddOn MCE V7.2.12
- INCA AddOn FlexRay V7.2.12
- INCA AddOn LIN V7.2.12
- INCA AddOn QM-Basic V7.2.12
- INCA AddOn EIP V7.2.12
- INCA AddOn SIP V7.2.12
- INCA AddOn ODX V7.2.12
- INCA AddOn CAN-Transmit V7.2.12
- INCA AddOn INCA-VoiceRecorder V7.2.12
- INCA AddOn INCA-TOUCH V7.2.12

Further ETAS Products:

- MDA V7.2.12
 - ETK Tools V4.1.13
 - ETAS License Manager V1.7.0 and
 - BOA EBI Distribution Package V2.21.0
- Together the INCA Service Pack the ETAS License Manager (LiMa) is shipped.
All ETAS software products are sharing only one installation of the ETAS LiMa. Therefore

each product installation installs LiMa only if there is an older or no version available on the target computer. Another ETAS software product might update LiMa to a succeeding version.

The same is valid for the BOA EBI Distribution Package.

- Setup Service Pack V2.2.12 (not installed)

Shipped with the INCA Service Pack, but manual installation required:

- INCA-MIP V7.2.12 (manual installation, see important notes above)
- MDF Shell Extension V2.0.5 (manual installation, see important notes above)

Note: MDA 8 is available on the *ETAS Download Page*

In addition required and update of HW highly recommended:

- HSP V11.12.0 (available on the ETAS Download Center)

3.12.2 Known issues and important hints

- See INCA 7.2 SP12 and SP12.1

3.12.3 Changed installations, major bug fixes and improvements

Updated with INCA V7.2 SP12.2

- INCA V7.2.12 with INCA V7.2.12 HF2 (includes changes of INCA V7.2.12 HF1)

3.1 INCA V7.2 SP 12.1

Details on Service Pack Installation – see also [Setup_ServicePack.pdf](#) (root of Service Pack folder).

3.1.1 Content of Service Pack and recommended installation

- INCA V7.2.12
- INCA V7.2.12 HF 1

Free general INCA Add-Ons:

- INCA AddOn Daisy-Chain ES4xx V7.2.12
- INCA AddOn Daisy-Chain ES6xx V7.2.12
- INCA AddOn Daisy-Chain ES93x V7.2.12
- INCA AddOn ES5xx V7.2.12
- INCA AddOn ES9xx V7.2.12
- INCA AddOn 3rd Party Hardware V7.2.12
- INCA AddOn eCDM V7.2.12

- INCA AddOn DriveRecorder V7.2.12
- INCA AddOn KID V7.2.12
- INCA AddOn Video Tutorials V7.2.12

Licensed INCA Add-Ons

- INCA AddOn MCE V7.2.12
- INCA AddOn FlexRay V7.2.12
- INCA AddOn LIN V7.2.12
- INCA AddOn QM-Basic V7.2.12
- INCA AddOn EIP V7.2.12
- INCA AddOn SIP V7.2.12
- INCA AddOn ODX V7.2.12
- INCA AddOn CAN-Transmit V7.2.12
- INCA AddOn INCA-VoiceRecorder V7.2.12
- INCA AddOn INCA-TOUCH V7.2.12

Further ETAS Products:

- MDA V7.2.12
- ETK Tools V4.1.13
- ETAS License Manager V1.7.0 and
- BOA EBI Distribution Package V2.21.0
Together the INCA Service Pack the ETAS License Manager (LiMa) is shipped.
All ETAS software products are sharing only one installation of the ETAS LiMa. Therefore each product installation installs LiMa only if there is an older or no version available on the target computer. Another ETAS software product might update LiMa to a succeeding version.
The same is valid for the BOA EBI Distribution Package.
- Setup Service Pack V2.2.12 (not installed)

Shipped with the INCA Service Pack, but manual installation required:

- INCA-MIP V7.2.12 (manual installation, see important notes above)
- MDF Shell Extension V2.0.5 (manual installation, see important notes above)

Note: MDA 8 is available on the *ETAS Download Page*

In addition required and update of HW highly recommended:

- HSP V11.12.0 (available on the ETAS Download Center)

3.1.2 Known issues and important hints

- See INCA 7.2 SP12

3.1.3 Changed installations, major bug fixes and improvements

Updated with INCA V7.2 SP12.1

- INCA V7.2.12 with INCA V7.2.12 HF1

3.2 INCA V7.2 SP 12

Details on Service Pack Installation – see also [Setup_ServicePack.pdf](#) (root of Service Pack folder).

3.2.1 Content of Service Pack and recommended installation

- INCA V7.2.12

Free general INCA Add-Ons:

- INCA AddOn Daisy-Chain ES4xx V7.2.12
- INCA AddOn Daisy-Chain ES6xx V7.2.12
- INCA AddOn Daisy-Chain ES93x V7.2.12
- INCA AddOn ES5xx V7.2.12
- INCA AddOn ES9xx V7.2.12
- INCA AddOn 3rd Party Hardware V7.2.12
- INCA AddOn eCDM V7.2.12
- INCA AddOn DriveRecorder V7.2.12
- INCA AddOn KID V7.2.12
- INCA AddOn Video Tutorials V7.2.12

Licensed INCA Add-Ons

- INCA AddOn MCE V7.2.12
- INCA AddOn FlexRay V7.2.12
- INCA AddOn LIN V7.2.12
- INCA AddOn QM-Basic V7.2.12
- INCA AddOn EIP V7.2.12
- INCA AddOn SIP V7.2.12
- INCA AddOn ODX V7.2.12
- INCA AddOn CAN-Transmit V7.2.12
- INCA AddOn INCA-VoiceRecorder V7.2.12
- INCA AddOn INCA-TOUCH V7.2.12

Further ETAS Products:

- MDA V7.2.12
- ETK Tools V4.1.13
- ETAS License Manager V1.7.0 and

- BOA EBI Distribution Package V2.21.0
Together the INCA Service Pack the ETAS License Manager (LiMa) is shipped.
All ETAS software products are sharing only one installation of the ETAS LiMa. Therefore each product installation installs LiMa only if there is an older or no version available on the target computer. Another ETAS software product might update LiMa to a succeeding version.
The same is valid for the BOA EBI Distribution Package.
- Setup Service Pack V2.2.12 (not installed)

Shipped with the INCA Service Pack, but manual installation required:

- INCA-MIP V7.2.12 (manual installation, see important notes above)
- MDF Shell Extension V2.0.5 (manual installation, see important notes above)

Note: MDA 8 is available on the *ETAS Download Page*

In addition required and update of HW highly recommended:

- HSP V11.12.0 (available on the ETAS Download Center)

3.2.2 Known issues and important hints

- After the installation the INCA Service Pack a reboot of the computer system is required. This is also true for hotfix installations.
- INCA Add-Ons (or INCA **engineering Add-Ons**) which are not part of the INCA Service Pack has to be updated manually to avoid unexpected behavior. Not updated Add-Ons might lead to system errors or wrong results.
- Important hint about **upgrade of the ETAS License Server** to Version 11.15.1 by end of 2018.
See \Documentation\WhatsNew\IT Information about Upgrade of ETAS LicenseServer.pdf
Note: With this INCA Service Pack (INCA V7.2 SP12) the former ETAS License Server is no longer supported. INCA V7.2.12 and the corresponding products require an upgrade of the ETAS License Server.
- Important hint about **change of the Grace Mode of ETAS Software products**.
This change will come with LIMA V1.7.1 scheduled for Q2/2019 and will affect all Software Products, providing Grace Mode, namely:
ASCET, INCA, INCA-FLOW, INTECRIO, INTECRIO-RLINK, ISOLAR-EVE, MDA, SCODE-CONGRA, SCODE-ANALYZER and their Add-ons
See \Documentation\WhatsNew\..
 ..Change of Grace Mode 2019_03_NE.pdf
 ..Change of Grace Mode 2019_03_DE.pdf
Note: This will affect INCA V7.2.13 and higher.
- Important hint about **INCA / MDA Support Stop of Windows 7**
Microsoft announced the end of the Extended Support for Windows 7 by January 14, 2020.
Therefore, ETAS will discontinue the development and maintenance of Windows 7 support for INCA and MDA as following:
 - Versions and service packs of INCA and MDA, released after January 14, 2020, will no longer support Windows 7.

See \Documentation\WhatsNew\..

- .. Maintenance Stop INCA Windows 7 EN.PDF
- .. Maintenance Stop INCA Windows 7 DE.PDF

- Important information to the ES886.1 module
The ES886.1 module is PREPARED for Ethernet monitoring. The functionality will be delivered in a subsequent HSP package and INCA Service Pack.
- #605100 INCA - INCA Service Pack Installer: Repair not working. Deleted files not restored. Repair Button might have no effect.
Repair of the installed INCA V7.2 works not in all cases.
If a repair of INCA is needed, uninstall INCA and install the INCA Service Pack anew
OR
install (update or down date) another INCA V7.2 Service Pack).
Note: This issue will be solved with INCA V7.2 SP13.

3.2.3 Solved known issue and important hints

#NA for SP-Installer
See also INCA V7.2 Release Notes

3.2.4 Changed installations, major bug fixes and improvements

Updated with INCA V7.2 SP12

- All but not MDF Shell Extension V2.0.5

New shipped INCA V7.2 SP12

- NA

New Features and bug fixes with INCA V7.2 SP12

- #597246 ETAS License Manager: LiMaServer.exe crashes with Dump file and error 0xE06D7363
- #607628 ETAS License Manger: Gui has stopped working

3.3 INCA V7.2 SP 11.1

3.3.1 Content of Service Pack and recommended installation

- INCA V7.2.11
 - INCA V7.2.11 HF1
- Free general INCA Add-Ons:
- INCA AddOn Daisy-Chain ES4xx V7.2.11
 - INCA AddOn Daisy-Chain V7.2.11
 - INCA AddOn Daisy-Chain V7.2.11
 - INCA AddOn ES5xx V7.2.11

- INCA AddOn ES9xx V7.2.11
- INCA AddOn 3rd Party Hardware V7.2.11
- INCA AddOn eCDM V7.2.11
- INCA AddOn DriveRecorder V7.2.11
- INCA AddOn KID V7.2.11
- INCA AddOn Video Tutorials V7.2.11

Licensed INCA Add-Ons

- INCA AddOn MCE V7.2.11
- INCA AddOn FlexRay V7.2.11
- INCA AddOn LIN V7.2.11
- INCA AddOn QM-Basic V7.2.11
- INCA AddOn EIP V7.2.11
- INCA AddOn SIP V7.2.11
- INCA AddOn ODX V7.2.11
- INCA AddOn CAN-Transmit V7.2.11
- INCA AddOn INCA-VoiceRecorder V7.2.11
- INCA AddOn INCA-TOUCH V7.2.11

Further ETAS Products:

- MDA V7.2.11
- ETK Tools V4.1.12
- ETAS License Manager V1.6.11 and
- BOA EBI Distribution Package V2.20.0

Together the INCA Service Pack the ETAS License Manager (LiMa) is shipped.

All ETAS software products are sharing only one installation of the ETAS LiMa. Therefore each product installation installs LiMa only if there is an older or no version available on the target computer. Another ETAS software product might update LiMa to a succeeding version.

The same is valid for the BOA EBI Distribution Package.

- Setup Service Pack V2.2.11 (not installed)

Shipped with the INCA Service Pack, but manual installation required:

- INCA-MIP V7.2.11 (manual installation, see important notes above)
- MDF Shell Extension V2.0.5 (manual installation, see important notes above)

Note: MDA 8 is available on the *ETAS Download Page*

In addition required and update of HW highly recommended:

- HSP V11.11.0 (available on the ETAS Download Center)

3.3.2 Known issues and important hints

- See INCA 7.2 SP11

3.3.3 Changed installations, major bug fixes and improvements

Updated with INCA V7.2 SP11.1

- INCA V7.2.11 with INCA V7.2.11 HF1

3.4 INCA V7.2 SP 11

Details on Service Pack Installation – see also [Setup_ServicePack.pdf](#) (root of Service Pack folder).

3.4.1 Content of Service Pack and recommended installation

- INCA V7.2.11

Free general INCA Add-Ons:

- INCA AddOn Daisy-Chain ES4xx V7.2.11
- INCA AddOn Daisy-Chain ES6xx V7.2.11
- INCA AddOn Daisy-Chain ES93x V7.2.11
- INCA AddOn ES5xx V7.2.11
- INCA AddOn ES9xx V7.2.11
- INCA AddOn 3rd Party Hardware V7.2.11
- INCA AddOn eCDM V7.2.11
- INCA AddOn DriveRecorder V7.2.11
- INCA AddOn KID V7.2.11
- INCA AddOn Video Tutorials V7.2.11

Licensed INCA Add-Ons

- INCA AddOn MCE V7.2.11
- INCA AddOn FlexRay V7.2.11
- INCA AddOn LIN V7.2.11
- INCA AddOn QM-Basic V7.2.11
- INCA AddOn EIP V7.2.11
- INCA AddOn SIP V7.2.11
- INCA AddOn ODX V7.2.11
- INCA AddOn CAN-Transmit V7.2.11
- INCA AddOn INCA-VoiceRecorder V7.2.11
- INCA AddOn INCA-TOUCH V7.2.11

Further ETAS Products:

- MDA V7.2.11
- ETK Tools V4.1.12

- ETAS License Manager V1.6.11 and
- BOA EBI Distribution Package V2.20.0
Together the INCA Service Pack the ETAS License Manager (LiMa) is shipped. All ETAS software products are sharing only one installation of the ETAS LiMa. Therefore each product installation installs LiMa only if there is an older or no version available on the target computer. Another ETAS software product might update LiMa to a succeeding version.
The same is valid for the BOA EBI Distribution Package.
- Setup Service Pack V2.2.11 (not installed)

Shipped with the INCA Service Pack, but manual installation required:

- INCA-MIP V7.2.11 (manual installation, see important notes above)
- MDF Shell Extension V2.0.5 (manual installation, see important notes above)

Note: MDA 8 is available on the *ETAS Download Page*

In addition required and update of HW highly recommended:

- HSP V11.11.0 (available on the ETAS Download Center)

3.4.2 Known issues and important hints

- After the installation the INCA Service Pack a reboot of the computer system is required. This is also true for hotfix installations.
- INCA Add-Ons (or INCA **engineering Add-Ons**) which are not part of the INCA Service Pack has to be updated manually to avoid unexpected behavior. Not updated Add-Ons might lead to system errors or wrong results.
- Important hint about **planned upgrade of the ETAS License Server** to Version 11.15.1 by end of 2018 see \Documentation\WhatsNew\IT Information about Upgrade of ETAS LicenseServer.pdf
- Important information to the ES886.1 module
The ES886.1 module is PREPARED for Ethernet monitoring. The functionality will be delivered in a subsequent HSP package and INCA Service Pack.
- #605100 INCA - INCA Service Pack Installer: Repair not working. Deleted files not restored. Repair Button might have no effect.
Repair of the installed INCA V7.2 works not in all cases.
If a repair of INCA is needed, uninstall INCA and install the INCA Service Pack anew
OR
install (update or down date) another INCA V7.2 Service Pack).

3.4.3 Solved known issue and important hints

#NA for SP-Installer

See also INCA V7.2 Release Notes

3.4.4 Changed installations, major bug fixes and improvements

Updated with INCA V7.2 SP11

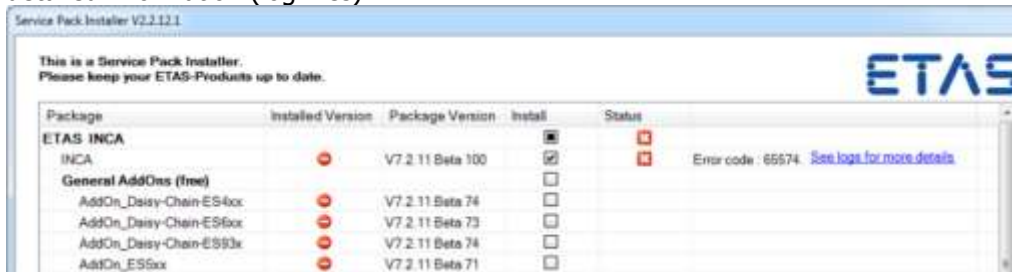
- All but not MDF Shell Extension V2.0.5

New shipped INCA V7.2 SP11

- NA

New Features and bug fixes with INCA V7.2 SP11

- Show Errors in GUI.
In Case of an installation error the Service Pack Installer provides now a link to more detailed information (log-files).



- TFS #592528 Service Pack Installer: During downdate the wrong icon is displayed. Installation finished is displayed but the downdate icon shall be displayed. Downdate worked correctly.

3.5 INCA V7.2 SP 10

Details on Service Pack Installation – see also [Setup_ServicePack.pdf](#) (root of Service Pack folder).

3.5.1 Content of Service Pack and recommended installation

- INCA V7.2.10
- Free general INCA Add-Ons:
 - INCA AddOn Daisy-Chain ES4xx V7.2.10
 - INCA AddOn Daisy-Chain V7.2.10
 - INCA AddOn Daisy-Chain V7.2.10
 - INCA AddOn ES5xx V7.2.10
 - INCA AddOn ES9xx V7.2.10
 - INCA AddOn 3rd Party Hardware V7.2.10
 - INCA AddOn eCDM V7.2.10
 - INCA AddOn DriveRecorder V7.2.10
 - INCA AddOn KID V7.2.10

- INCA AddOn Video Tutorials V7.2.10

Licensed INCA Add-Ons

- INCA AddOn MCE V7.2.10
- INCA AddOn FlexRay V7.2.10
- INCA AddOn LIN V7.2.10
- INCA AddOn QM-Basic V7.2.10
- INCA AddOn EIP V7.2.10
- INCA AddOn SIP V7.2.10
- INCA AddOn ODX V7.2.10
- INCA AddOn CAN-Transmit V7.2.10
- INCA AddOn INCA-VoiceRecorder V7.2.10
- INCA AddOn INCA-TOUCH V7.2.10

Further ETAS Products:

- MDA V7.2.10
- ETK Tools V4.1.11
- ETAS License Manager V1.6.10
Together the INCA Service Pack the ETAS License Manager (LiMa) is shipped.
All ETAS software products are sharing only one installation of the ETAS LiMa. Therefore each product installation installs LiMa only if there is an older or no version available on the target computer. Another ETAS software product might update LiMa to a succeeding version.
- Setup Service Pack V2.2.10 (not installed)

Shipped with the INCA Service Pack, but manual installation required:

- INCA-MIP V7.2.10 (manual installation, see important notes above)
- MDF Shell Extension V2.0.5 (manual installation, see important notes above)

Note: MDA 8 is available on the ETAS Download Page

In addition required and update of HW highly recommended:

- HSP V11.10.0 (available on the ETAS Download Center)

3.5.2 Known issues and important hints

Very important: After the installation a reboot of the computer system is required. This is also true for hotfix installations.

INCA Add-Ons (or INCA **engineering Add-Ons**) which are not part of the INCA Service Pack has to be updated manually to avoid unexpected behavior. Not updated Add-Ons might lead to system errors or wrong results.

Important hint about **planned upgrade of the ETAS License Server** to Version 11.15.1 by end of 2018 see \Documentation\WhatsNew\IT Information about Upgrade of ETAS LicenseServer.pdf

Important information to the ES886.1 module

The ES886.1 module is PREPARED for Ethernet monitoring. The functionality will be delivered in a subsequent HSP package and INCA Service Pack.

3.5.3 Solved known issue and important hints

#NA for SP-Installer
See also INCA V7.2 Release Notes

3.5.4 Changed installations, major bug fixes and improvements

Updated with INCA V7.2 SP10

- All but not MDF Shell Extension V2.0.5

New shipped INCA V7.2 SP10

- INCA AddOn INCA-VoiceRecorder V7.2.10

New Features and bug fixes with INCA V7.2 SP10

- NA

3.6 INCA V7.2 SP 9

Details on Service Pack Installation – see also [Setup_ServicePack.pdf](#) (root of Service Pack folder).

3.6.1 Content of Service Pack and recommended installation

- INCA V7.2.9

Free general INCA Add-Ons:

- INCA AddOn Daisy-Chain ES4xx V7.2.9
- INCA AddOn Daisy-Chain V7.2.9
- INCA AddOn Daisy-Chain V7.2.9
- INCA AddOn ES5xx V7.2.9
- INCA AddOn ES9xx V7.2.9
- INCA AddOn 3rd Party Hardware V7.2.9
- INCA AddOn eCDM V7.2.9
- INCA AddOn DriveRecorder V7.2.9
- INCA AddOn KID V7.2.9
- INCA AddOn Video Tutorials V7.2.9

Licensed INCA Add-Ons

- INCA AddOn MCE V7.2.9
- INCA AddOn FlexRay V7.2.9
- INCA AddOn LIN V7.2.9
- INCA AddOn QM-Basic V7.2.9
- INCA AddOn EIP V7.2.9
- INCA AddOn SIP V7.2.9
- INCA AddOn ODX V7.2.9
- INCA AddOn CAN-Transmit V7.2.9
- INCA AddOn INCA-TOUCH V7.2.9

Further ETAS Products:

- MDA V7.2.9
- ETK Tools V4.1.10
- ETAS License Manager V1.6.8

Together the INCA Service Pack the ETAS License Manager (LiMa) is shipped.

All ETAS software products are sharing only one installation of the ETAS LiMa. Therefore each product installation installs LiMa only if there is an older or no version available on the target computer. Another ETAS software product might update LiMa to a succeeding version.

- Setup Service Pack V2.2.9 (not installed)

Shipped with the INCA Service Pack, but manual installation required:

- INCA-MIP V7.2.9 (manual installation, see important notes above)

- MDF Shell Extension V2.0.5 (manual installation, see important notes above)
- Note: MDA 8 is available on the ETAS Download Page

In addition required and update of HW highly recommended:

- HSP V11.9.0 (available on the ETAS Download Center)

3.6.2 Known issues and important hints

Very important: After the installation a reboot of the computer system is required. This is also true for hotfix installations.

INCA Add-Ons (or INCA engineering Add-Ons) which are not part of the INCA Service Pack has to be updated manually to avoid unexpected behavior. Not updated Add-Ons might lead to system errors or wrong results.

3.6.3 Solved known issue and important hints

#NA for SP-Installer

See also INCA V7.2 Release Notes

3.6.4 Changed installations, major bug fixes and improvements

Updated with INCA V7.2 SP9

- All but MDF Shell Extension V2.0.5

New shipped INCA V7.2 SP9

- NA

New Features and bug fixes with INCA V7.2 SP9

- NA

3.7 INCA V7.2 SP 8.3

Details on Service Pack Installation – see also [Setup_ServicePack.pdf](#) (root of Service Pack folder).

3.7.1 Content of Service Pack and recommended installation

- INCA V7.2.8
- INCA V7.2.8 HF2

Free general INCA Add-Ons:

- INCA AddOn Daisy-Chain ES4xx V7.2.8

- INCA AddOn Daisy-Chain V7.2.8
- INCA AddOn Daisy-Chain V7.2.8
- INCA AddOn ES5xx V7.2.8
- INCA AddOn ES9xx V7.2.8
- INCA AddOn 3rd Party Hardware V7.2.8
- INCA AddOn eCDM V7.2.8
- INCA AddOn DriveRecorder V7.2.8
- INCA AddOn KID V7.2.8
- INCA AddOn Video Tutorials V7.2.8

Licensed INCA Add-Ons

- INCA AddOn MCE V7.2.8
- INCA AddOn FlexRay V7.2.8
- INCA AddOn LIN V7.2.8
- INCA AddOn QM-Basic V7.2.8
- INCA AddOn EIP V7.2.8
- INCA AddOn SIP V7.2.8
- INCA AddOn ODX V7.2.8
- INCA AddOn CAN-Transmit V7.2.8
- INCA AddOn INCA-TOUCH V7.2.8 Build 115

Further ETAS Products:

- MDA V7.2.8
- ETK Tools V4.1.9
- Setup Service Pack V2.2.8 (not installed)

Shipped with the INCA Service Pack, but manual installation required:

- INCA-MIP V7.2.8 (manual installation, see important notes above)
- MDF Shell Extension V2.0.5 (manual installation, see important notes above)

Note: MDA 8 is available on the ETAS Download Page

In addition required:

- HSP V11.8.1 (available on the ETAS Download Center)

3.7.2 Known issues and important hints

Very important: After the installation a reboot of the computer system is required. This is also true for hotfix installations.

INCA Add-Ons (or INCA engineering Add-Ons) which are not part of the INCA Service Pack has to be updated manually to avoid unexpected behavior. Not updated Add-Ons might lead to system errors or wrong results.

3.7.3 Solved known issue and important hints

#NA for SP-Installer

See also INCA V7.2 Release Notes

3.7.4 Changed installations, major bug fixes and improvements

Updated with INCA V7.2 SP8.3

- INCA V7.2.8 with INCA V7.2.8 HF2

New shipped INCA V7.2 SP8.3

- NA

New Features and bug fixes with INCA V7.2 SP8.3

- NA

3.8 INCA V7.2 SP 8.2

Details on Service Pack Installation – see also [Setup_ServicePack.pdf](#) (root of Service Pack folder).

3.8.1 Content of Service Pack and recommended installation

- INCA V7.2.8
 - INCA V7.2.8 HF1 Build 134
- Free general INCA Add-Ons:
- INCA AddOn Daisy-Chain ES4xx V7.2.8
 - INCA AddOn Daisy-Chain V7.2.8
 - INCA AddOn Daisy-Chain V7.2.8
 - INCA AddOn ES5xx V7.2.8
 - INCA AddOn ES9xx V7.2.8
 - INCA AddOn 3rd Party Hardware V7.2.8
 - INCA AddOn eCDM V7.2.8
 - INCA AddOn DriveRecorder V7.2.8
 - INCA AddOn KID V7.2.8
 - INCA AddOn Video Tutorials V7.2.8
- Licensed INCA Add-Ons
- INCA AddOn MCE V7.2.8
 - INCA AddOn FlexRay V7.2.8
 - INCA AddOn LIN V7.2.8
 - INCA AddOn QM-Basic V7.2.8
 - INCA AddOn EIP V7.2.8

- INCA AddOn SIP V7.2.8
- INCA AddOn ODX V7.2.8
- INCA AddOn CAN-Transmit V7.2.8
- INCA AddOn INCA-TOUCH V7.2.8 Build 115

Further ETAS Products:

- MDA V7.2.8
- ETK Tools V4.1.9
- Setup Service Pack V2.2.8 (not installed)

Shipped with the INCA Service Pack, but manual installation required:

- INCA-MIP V7.2.8 (manual installation, see important notes above)
- MDF Shell Extension V2.0.5 (manual installation, see important notes above)

Note: MDA 8 is available on the ETAS Download Page

In addition required:

- HSP V11.8.1 (available on the ETAS Download Center)

3.8.2 Known issues and important hints

Very important: After the installation a reboot of the computer system is required. This is also true for hotfix installations.

INCA Add-Ons (or INCA engineering Add-Ons) which are not part of the INCA Service Pack has to be updated manually to avoid unexpected behavior. Not updated Add-Ons might lead to system errors or wrong results.

3.8.3 Solved known issue and important hints

#NA for SP-Installer

See also INCA V7.2 Release Notes

3.8.4 Changed installations, major bug fixes and improvements

Updated with INCA V7.2 SP8.2

- INCA V7.2.8 with INCA V7.2.8 HF1 Build 134 (minor change)

New shipped INCA V7.2 SP8.2

- NA

New Features and bug fixes with INCA V7.2 SP8.2

- NA

3.9 INCA V7.2 SP 8.1

Details on Service Pack Installation – see also [Setup_ServicePack.pdf](#) (root of Service Pack folder).

3.9.1 Content of Service Pack and recommended installation

- INCA V7.2.8
- INCA V7.2.8 HF1 Build 133

Free general INCA Add-Ons:

- INCA AddOn Daisy-Chain ES4xx V7.2.8
- INCA AddOn Daisy-Chain V7.2.8
- INCA AddOn Daisy-Chain V7.2.8
- INCA AddOn ES5xx V7.2.8
- INCA AddOn ES9xx V7.2.8
- INCA AddOn 3rd Party Hardware V7.2.8
- INCA AddOn eCDM V7.2.8
- INCA AddOn DriveRecorder V7.2.8
- INCA AddOn KID V7.2.8
- INCA AddOn Video Tutorials V7.2.8

Licensed INCA Add-Ons

- INCA AddOn MCE V7.2.8
- INCA AddOn FlexRay V7.2.8
- INCA AddOn LIN V7.2.8
- INCA AddOn QM-Basic V7.2.8
- INCA AddOn EIP V7.2.8
- INCA AddOn SIP V7.2.8
- INCA AddOn ODX V7.2.8
- INCA AddOn CAN-Transmit V7.2.8
- INCA AddOn INCA-TOUCH V7.2.8 Build 115

Further ETAS Products:

- MDA V7.2.8
- ETK Tools V4.1.9
- Setup Service Pack V2.2.8 (not installed)

Shipped with the INCA Service Pack, but manual installation required:

- INCA-MIP V7.2.8 (manual installation, see important notes above)
- MDF Shell Extension V2.0.5 (manual installation, see important notes above)

Note: MDA 8 is available on the [ETAS Download Page](#)

In addition required:

- HSP V11.8.1 (available on the ETAS Download Center)

3.9.2 Known issues and important hints

Very important: After the installation a reboot of the computer system is required. This is also true for hotfix installations.

INCA Add-Ons (or INCA engineering Add-Ons) which are not part of the INCA Service Pack has to be updated manually to avoid unexpected behavior. Not updated Add-Ons might lead to system errors or wrong results.

3.9.3 Solved known issue and important hints

#NA for SP-Installer

See also INCA V7.2 Release Notes

3.9.4 Changed installations, major bug fixes and improvements

Updated with INCA V7.2 SP8.1

- INCA V7.2.8 with INCA V7.2.8 HF1 Build 133
- INCA AddOn INCA-TOUCH V7.2.8 Build 115

New shipped INCA V7.2 SP8.1

- NA

New Features and bug fixes with INCA V7.2 SP8.1

- NA

3.10 INCA V7.2 SP 8

Details on Service Pack Installation – see also [Setup_ServicePack.pdf](#) (root of Service Pack folder).

3.10.1 Content of Service Pack and recommended installation

- INCA V7.2.8

Free general INCA Add-Ons:

- INCA AddOn Daisy-Chain ES4xx V7.2.8
- INCA AddOn Daisy-Chain V7.2.8
- INCA AddOn Daisy-Chain V7.2.8
- INCA AddOn ES5xx V7.2.8
- INCA AddOn ES9xx V7.2.8

- INCA AddOn 3rd Party Hardware V7.2.8
- INCA AddOn eCDM V7.2.8
- INCA AddOn DriveRecorder V7.2.8
- INCA AddOn KID V7.2.8
- INCA AddOn Video Tutorials V7.2.8

Licensed INCA Add-Ons

- INCA AddOn MCE V7.2.8
- INCA AddOn FlexRay V7.2.8
- INCA AddOn LIN V7.2.8
- INCA AddOn QM-Basic V7.2.8
- INCA AddOn EIP V7.2.8
- INCA AddOn SIP V7.2.8
- INCA AddOn ODX V7.2.8
- INCA AddOn CAN-Transmit V7.2.8
- INCA AddOn INCA-TOUCH V7.2.8

Further ETAS Products:

- MDA V7.2.8
- ETK Tools V4.1.9
- Setup Service Pack V2.2.8 (not installed)

Shipped with the INCA Service Pack, but manual installation required:

- INCA-MIP V7.2.8 (manual installation, see important notes above)
- MDF Shell Extension V2.0.5 (manual installation, see important notes above)

Note: MDA 8 is available on the ETAS Download Page

In addition required:

- HSP V11.8.0 (available on the ETAS Download Center)

3.10.2 Known issues and important hints

Very important: After the installation a reboot of the computer system is required. This is also true for hotfix installations.

INCA Add-Ons (or INCA engineering Add-Ons) which are not part of the INCA Service Pack has to be updated manually to avoid unexpected behavior. Not updated Add-Ons might lead to system errors or wrong results.

3.10.3 Solved known issue and important hints

#NA for SP-Installer

See also INCA V7.2 Release Notes

3.10.4 Changed installations, major bug fixes and improvements

Updated with INCA V7.2 SP8

- All but MDF Shell Extension V2.0.5

New shipped INCA V7.2 SP8

- NA

New Features and bug fixes with INCA V7.2 SP8

- NA

3.11 INCA V7.2 SP 7

Details on Service Pack Installation – see also [Setup_ServicePack.pdf](#) (root of Service Pack folder).

3.11.1 Content of Service Pack and recommended installation

- INCA V7.2.7

Free general INCA Add-Ons:

- INCA AddOn Daisy-Chain ES4xx V7.2.7
- INCA AddOn Daisy-Chain V7.2.7
- INCA AddOn Daisy-Chain V7.2.7
- INCA AddOn ES5xx V7.2.7
- INCA AddOn ES9xx V7.2.7
- INCA AddOn 3rd Party Hardware V7.2.7
- INCA AddOn eCDM V7.2.7
- INCA AddOn DriveRecorder V7.2.7
- INCA AddOn KID V7.2.7
- INCA AddOn Video Tutorials V7.2.7

Licensed INCA Add-Ons

- INCA AddOn MCE V7.2.7
- INCA AddOn FlexRay V7.2.7
- INCA AddOn LIN V7.2.7
- INCA AddOn QM-Basic V7.2.7
- INCA AddOn EIP V7.2.7
- INCA AddOn SIP V7.2.7
- INCA AddOn ODX V7.2.7
- INCA AddOn CAN-Transmit V7.2.7

- INCA AddOn INCA-TOUCH V7.2.7

Further ETAS Products:

- MDA V7.2.7
- ETK Tools V4.1.8
- Setup Service Pack V2.2.6 (not installed)

Shipped with the INCA Service Pack, but manual installation required:

- INCA-MIP V7.2.7 (manual installation, see important notes above)
- MDF Shell Extension V2.0.5 (manual installation, see important notes above)

Note: MDA 8 is available on the ETAS Download Page

In addition required:

- HSP V11.7.0 (available on the ETAS Download Center)

3.11.2 Known issues and important hints

Very important: After the installation a reboot of the computer system is required. This is also true for hotfix installations.

INCA Add-Ons (or INCA engineering Add-Ons) which are not part of the INCA Service Pack has to be updated manually to avoid unexpected behavior. Not updated Add-Ons might lead to system errors or wrong results.

3.11.3 Solved known issue and important hints

#NA for SP-Installer

See also INCA V7.2 Release Notes

3.11.4 Changed installations, major bug fixes and improvements

Updated with INCA V7.2 SP7

- All but MDF Shell Extension V2.0.5

New shipped INCA V7.2 SP7

- NA

New Features and bug fixes with INCA V7.2 SP7

- 580167 Service Pack Installer: Support of MDA 8 - installation or any other 64bit Installation (with SPI V2.2.6 a MDA V8 installation was not detected)
- 578424 Service Pack Installer: "Down Date" - icon changed during installation to normal installation icon - but should stay "Down Date"
- 577303 Service Pack Installer: "Install" - Button in German language is in small letter "installieren" but should be "Installieren".

3.12 INCA V7.2 SP 6.2

See also INCA V7.2 SP 6

3.12.1 Content of Service Pack and recommended installation

- INCA V7.2.6

- INCA V7.2.6 HF2

Free general INCA Add-Ons:

- INCA AddOn Daisy-Chain ES4xx V7.2.6

- INCA AddOn Daisy-Chain V7.2.6

- INCA AddOn Daisy-Chain V7.2.6

- INCA AddOn ES5xx V7.2.6

- INCA AddOn ES9xx V7.2.6

- INCA AddOn 3rd Party Hardware V7.2.6

- INCA AddOn eCDM V7.2.6

- INCA AddOn DriveRecorder V7.2.6

- INCA AddOn KID V7.2.6

- INCA AddOn Video Tutorials V7.2.6

Licensed INCA Add-Ons

- INCA AddOn MCE V7.2.6

- INCA AddOn FlexRay V7.2.6

- INCA AddOn LIN V7.2.6

- INCA AddOn QM-Basic V7.2.6

- INCA AddOn EIP V7.2.6

- INCA AddOn SIP V7.2.6

- INCA AddOn ODX V7.2.6

- INCA AddOn CAN-Transmit V7.2.6

- INCA AddOn INCA-TOUCH V7.2.6

Further ETAS Products:

- MDA V7.2.6

- ETK Tools V4.1.7

- Setup Service Pack V2.2.6 (not installed)

Shipped with the INCA Service Pack, but manual installation required:

- INCA-MIP V7.2.6 (manual installation, see important notes above)

- MDF Shell Extension V2.0.5 (manual installation, see important notes above)

Note: MDA 8 is available on the ETAS Download Page

In addition required:

- HSP V11.6.0 (available on the ETAS Download Center)

3.12.2 Known issues and important hints

Very important: After the installation a reboot of the computer system is required. This is also true for hotfix installations.

INCA Add-Ons (or INCA engineering Add-Ons) which are not part of the INCA Service Pack has to be updated manually to avoid unexpected behavior. Not updated Add-Ons might lead to system errors or wrong results.

3.12.3 Solved known issue and important hints

Nothing for the Service P-Installer but see also known issues section of INCA V7.2 Release Notes.

3.12.4 Changed installations, major bug fixes and improvements

Updated with INCA V7.2 SP6.2

- INCA V7.2.6 with INCA V7.2.6 HF2
(INCA V7.2.6 HF2 contains solutions of INCA V7.2.6 HF1 shipped with INCA V7.2 SP6.1)

New shipped INCA V7.2 SP6.2

- NA

New Features and bug fixes with INCA V7.2 SP6.2

- See INCA V7.2 SP6

3.13 INCA V7.2 SP 6

News and Details on Service Pack Installation – see also [Setup_ServicePack.pdf](#), please (root of Service Pack folder).

3.13.1 Content of Service Pack and recommended installation

- INCA V7.2.6

Free general INCA Add-Ons:

- INCA AddOn Daisy-Chain ES4xx V7.2.6
- INCA AddOn Daisy-Chain V7.2.6
- INCA AddOn Daisy-Chain V7.2.6
- INCA AddOn ES5xx V7.2.6
- INCA AddOn ES9xx V7.2.6
- INCA AddOn 3rd Party Hardware V7.2.6
- INCA AddOn eCDM V7.2.6
- INCA AddOn DriveRecorder V7.2.6
- INCA AddOn KID V7.2.6

- INCA AddOn Video Tutorials V7.2.6

Licensed INCA Add-Ons

- INCA AddOn MCE V7.2.6
- INCA AddOn FlexRay V7.2.6
- INCA AddOn LIN V7.2.6
- INCA AddOn QM-Basic V7.2.6
- INCA AddOn EIP V7.2.6
- INCA AddOn SIP V7.2.6
- INCA AddOn ODX V7.2.6
- INCA AddOn CAN-Transmit V7.2.6
- INCA AddOn INCA-TOUCH V7.2.6

Further ETAS Products:

- MDA V7.2.6
- ETK Tools V4.1.7
- Setup Service Pack V2.2.6 (not installed)

Shipped with the INCA Service Pack, but manual installation required:

- INCA-MIP V7.2.6 (manual installation, see important notes above)
- MDF Shell Extension V2.0.5 (manual installation, see important notes above)

Note: MDA 8 is available on the ETAS Download Page

In addition required:

- HSP V11.6.0 (available on the ETAS Download Center)

3.13.2 Known issues and important hints

Very important: After the installation a reboot of the computer system is required. This is also true for hotfix installations.

INCA Add-Ons (or INCA engineering Add-Ons) which are not part of the INCA Service Pack has to be updated manually to avoid unexpected behavior. Not updated Add-Ons might lead to system errors or wrong results.

3.13.3 Solved known issue and important hints

#NA for SP-Installer

See also INCA V7.2 Release Notes

3.13.4 Changed installations, major bug fixes and improvements

Updated with INCA V7.2 SP6

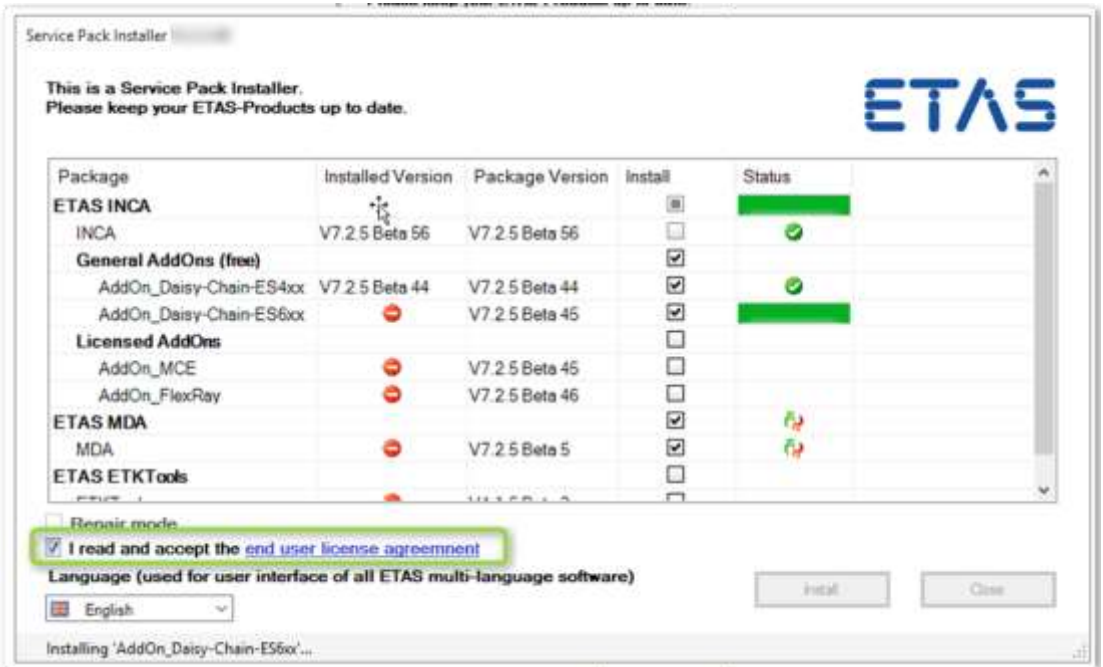
- All but MDF Shell Extension V2.0.5

New shipped INCA V7.2 SP6

- NA

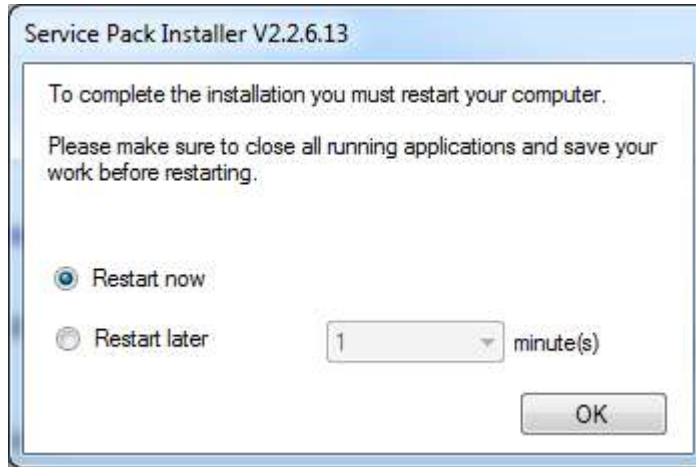
New Features and bug fixes with INCA V7.2 SP6

- Documentation with new behavior and list of all parameters and error codes available
 - o see root of Service Pack folder: Setup_ServicePack.pdf
- EULA (End User License Agreement) has to be accepted before installation, either in the GUI or via command line parameter in case of silent installation.
 - o GUI



- o Parameter: /EULAAccepted
if not accepted SP-Installer will return error 35
- New path for log files
 - o Log Path: %PROGRAMDATA%\ETAS\SETUP\Logs
 - o Backup Path: %PROGRAMDATA%\ETAS\SETUP\BACKUP
- Delay of reboot – GUI and parameter for silent installation

- GUI



- Silent Modus: Parameter /RestartDelayTime= <mins>
- Additional new parameters for silent installation
 - /NoRestart Skips any restart request during installation if required
 - /AllowRestart Allows restart of the system between installations if required
- If the installation is interrupted due to a reboot (triggered by other means than INCA Service Pack installation, e.g. manually), the installation will continue after the reboot.
- Solved Calls
 - #569090 Service Pack Installer needs additional reboot after MDA Installation - if EtasRemoteLogger is still running
 - #569994 Service Pack Installer: When selected with Category headings, Add-on's are not getting installed on system
 - #574198 Service Pack Installer: Wrong Icon (update) displayed during "Repair"

3.14 INCA V7.2 SP 5.1

News and Details on Service Pack Installation – see also [Setup_ServicePack.pdf](#), please (root of Service Pack folder)

3.14.1 Content of Service Pack and recommended installation

- INCA V7.2.5
 - INCA V7.2.5 HF1 Build 125
- Free general INCA Add-Ons:
- INCA AddOn Daisy-Chain ES4xx V7.2.5
 - INCA AddOn Daisy-Chain V7.2.5
 - INCA AddOn Daisy-Chain V7.2.5
 - INCA AddOn ES5xx V7.2.5
 - INCA AddOn ES9xx V7.2.5
 - INCA AddOn 3rd Party Hardware V7.2.5

- INCA AddOn eCDM V7.2.5
- INCA AddOn DriveRecorder V7.2.5
- INCA AddOn KID V7.2.5
- INCA AddOn Video Tutorials V7.2.5

Licensed INCA Add-Ons

- INCA AddOn MCE V7.2.5
- INCA AddOn FlexRay V7.2.5
- INCA AddOn LIN V7.2.5
- INCA AddOn QM-Basic V7.2.5
- INCA AddOn EIP V7.2.5
- INCA AddOn SIP V7.2.5
- INCA AddOn ODX V7.2.5
- INCA AddOn CAN-Transmit V7.2.5
- INCA AddOn INCA-TOUCH V7.2.5 Build 126

Further ETAS Products:

- MDA V7.2.5
- ETK Tools V4.1.6
- Setup Service Pack V2.2.5 (not installed)

Shipped with the INCA Service Pack, but manual installation required:

- INCA-MIP V7.2.5 (manual installation, see important notes above)
- MDF Shell Extension V2.0.5 (manual installation, see important notes above)

Note: MDA 8 is available on the ETAS Download Page

In addition required:

- HSP V11.5.0 or V11.5.1 (available on the ETAS Download Center)

3.14.2 Known issues and important hints

Very important: After the installation a reboot of the computer system is required. This is also true for hotfix installations.

INCA Add-Ons (or INCA engineering Add-Ons) which are not part of the INCA Service Pack has to be updated manually to avoid unexpected behavior. Not updated Add-Ons might lead to system errors or wrong results.

3.14.3 Solved known issue and important hints

#NA

3.14.4 Changed installations, major bug fixes and improvements

Updated with INCA V7.2 SP5.1

- INCA V7.2.5 with INCA V7.2.5 HF1 Build 125

- INCA-TOUCH V7.2.5 Build 126

New shipped INCA V7.2 SP5.1

- NA

New Features and bugfixes with INCA V7.2 SP5.1

- See INCA V7.2 SP 5

3.15 INCA V7.2 SP 5

News and Details on Service Pack Installation – see also [Setup_ServicePack.pdf](#), please (root of Service Pack folder)

3.15.1 Content of Service Pack and recommended installation

- INCA V7.2.5

Free general INCA Add-Ons:

- INCA AddOn Daisy-Chain ES4xx V7.2.5
- INCA AddOn Daisy-Chain V7.2.5
- INCA AddOn Daisy-Chain V7.2.5
- INCA AddOn ES5xx V7.2.5
- INCA AddOn ES9xx V7.2.5
- INCA AddOn 3rd Party Hardware V7.2.5
- INCA AddOn eCDM V7.2.5
- INCA AddOn DriveRecorder V7.2.5
- INCA AddOn KID V7.2.5
- INCA AddOn Video Tutorials V7.2.5

Licensed INCA Add-Ons

- INCA AddOn MCE V7.2.5
- INCA AddOn FlexRay V7.2.5
- INCA AddOn LIN V7.2.5
- INCA AddOn QM-Basic V7.2.5
- INCA AddOn EIP V7.2.5
- INCA AddOn SIP V7.2.5
- INCA AddOn ODX V7.2.5
- INCA AddOn CAN-Transmit V7.2.5
- INCA AddOn INCA-TOUCH V7.2.5 Build 125

Further ETAS Products:

- MDA V7.2.5
- ETK Tools V4.1.6

- Setup Service Pack V2.2.5 (not installed)
Shipped with the INCA Service Pack, but manual installation required:
 - INCA-MIP V7.2.5 (manual installation, see important notes above)
 - MDF Shell Extension V2.0.5 (manual installation, see important notes above)
- Note: MDA 8 is available on the ETAS Download Page

In addition required:

- HSP V11.5.0 (available on the ETAS Download Center)

3.15.2 Known issues and important hints

Very important: After the installation a reboot of the computer system is required. This is also true for hotfix installations.

INCA Add-Ons (or INCA engineering Add-Ons) which are not part of the INCA Service Pack has to be updated manually to avoid unexpected behavior. Not updated Add-Ons might lead to system errors or wrong results.

3.15.3 Solved known issue and important hints

#NA

3.15.4 Changed installations, major bug fixes and improvements

Updated with INCA V7.2 SP5

- All but MDF Shell Extension V2.0.5

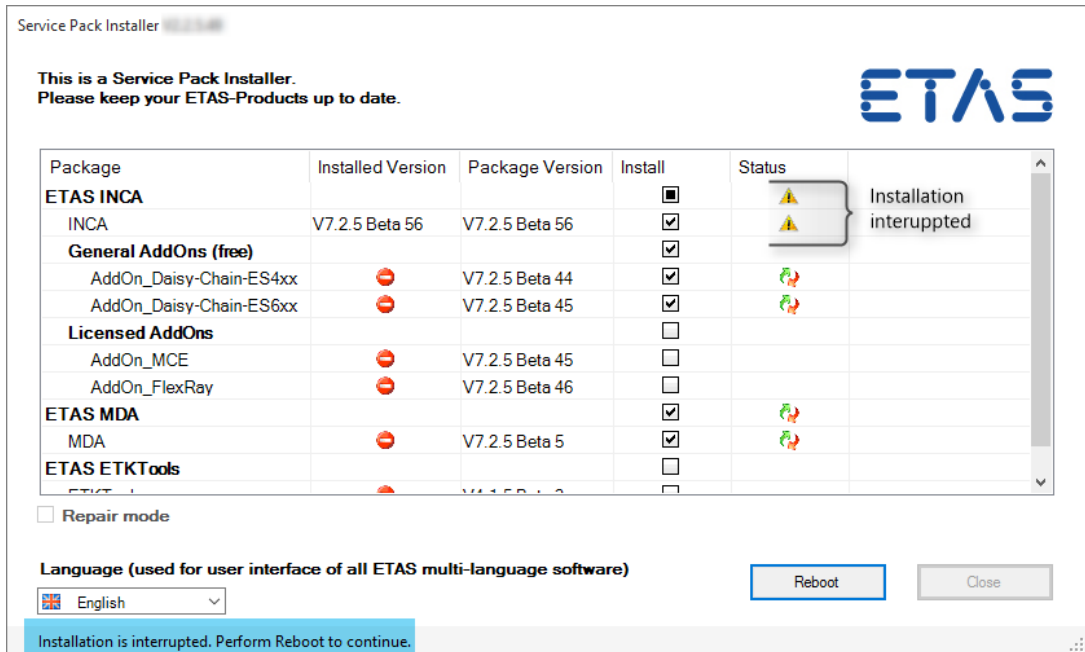
New shipped INCA V7.2 SP5

- INCA AddOn INCA-TOUCH V7.2.5

New Features and bug fixes with INCA V7.2 SP5

Installation of 3rd party software improved by means of better detection, installation and reboot (if necessary) to avoid and solve several issues with installation of INCA. Product installations and Setup Service Pack improved.

- If required, the 3rd party software will be installed before INCA (or other product) installation. This solves several reported issues with the INCA Service Pack installation (and included products)
- In case any installation of the INCA Service Pack requires an immediate reboot after installation, the Service Pack Installer (SPI) will handle this automatically.



Service Pack installer is interrupted to perform the reboot, indicated in the status bar and icon . After pressing reboot, the system will reboot after a short delay and SPI continues installation automatically after reboot is performed.

- New icon for Setup Service Pack indicating a reboot is required (to avoid installation issues)
- New error codes introduced to handle reboots during automatic installation (it is also highly recommended to execute the reboot before continuing automatic installation – else installation will fail or get incomplete or erroneous)
- Documentation with new behavior and list of all parameters and error codes available – see root of Service Pack folder: `Setup_ServicePack.pdf`
- Solved Calls
 - #563138 Documentation (Setup_ServicePack.pdf) with improvements / error codes / changes added to SP installation
 - #561419 Service Pack Installer requests a reboot at end of package installation, but button 'Reboot' of SPI is not functional
 - #552682 Copying of documentation fails in case file or folder blocked.

3.16 INCA V7.2 SP 4.1

INCA V7.2 SP4.1 is only a minor change compared to INCA V7.2 SP4 to ship a new feature with INCA V7.2.4 HF1.

Solved known issues, enhancements see also section INCA V7.2 SP4, please.

3.16.1 Content of Service Pack and recommended installation

- INCA V7.2.4
 - INCA V7.2.4 HF1
- Free general INCA Add-Ons:
- INCA AddOn Daisy-Chain ES4xx V7.2.4

- INCA AddOn Daisy-Chain V7.2.4
- INCA AddOn Daisy-Chain V7.2.4
- INCA AddOn ES5xx V7.2.4
- INCA AddOn ES9xx V7.2.4
- INCA AddOn 3rd Party Hardware V7.2.4
- INCA AddOn eCDM V7.2.4
- INCA AddOn DriveRecorder V7.2.4
- INCA AddOn KID V7.2.4
- INCA AddOn Video Tutorials V7.2.4

Licensed INCA Add-Ons

- INCA AddOn MCE V7.2.4
- INCA AddOn FlexRay V7.2.4
- INCA AddOn LIN V7.2.4
- INCA AddOn QM-Basic V7.2.4
- INCA AddOn EIP V7.2.4
- INCA AddOn SIP V7.2.4
- INCA AddOn ODX V7.2.4
- INCA AddOn CAN-Transmit V7.2.4

Further ETAS Products:

- MDA V7.2.4
- ETK Tools V4.1.5
- Setup Service Pack V2.2.4 (not installed)

Shipped with the INCA Service Pack, but manual installation required:

- INCA-MIP V7.2.4 (manual installation, see important notes above)
- MDF Shell Extension V2.0.5 (manual installation, see important notes above)

Note: MDA 8 is available on the ETAS Download Page

In addition required:

- HSP V11.4.0 (available on the ETAS Download Center)

3.16.2 Known issues and important hints

See INCA V7.2 SP4, please.

3.16.3 Changed installations, major bug fixes and improvements

Updated with INCA V7.2 SP4.1

- Only INCA V7.2.4 via INCA V7.2.4 HF1

New shipped INCA V7.2 SP4.1

- NA

New Features and bugfixes with INCA V7.2 SP4.1

- With INCA V7.2 SP4.1 the new feature „Extended information for μ C Trace Overflow“ is available. See also Release Notes INCA V7.2.4 HF1 with further information.

3.17 INCA V7.2 SP 4

3.17.1 Content of Service Pack and recommended installation

- INCA V7.2.4

Free general INCA Add-Ons:

- INCA AddOn Daisy-Chain ES4xx V7.2.4
- INCA AddOn Daisy-Chain V7.2.4
- INCA AddOn Daisy-Chain V7.2.4
- INCA AddOn ES5xx V7.2.4
- INCA AddOn ES9xx V7.2.4
- INCA AddOn 3rd Party Hardware V7.2.4
- INCA AddOn eCDM V7.2.4
- INCA AddOn DriveRecorder V7.2.4
- INCA AddOn KID V7.2.4
- INCA AddOn Video Tutorials V7.2.4

Licensed INCA Add-Ons

- INCA AddOn MCE V7.2.4
- INCA AddOn FlexRay V7.2.4
- INCA AddOn LIN V7.2.4
- INCA AddOn QM-Basic V7.2.4
- INCA AddOn EIP V7.2.4
- INCA AddOn SIP V7.2.4
- INCA AddOn ODX V7.2.4
- INCA AddOn CAN-Transmit V7.2.4

Further ETAS Products:

- MDA V7.2.4

- ETK Tools V4.1.5
 - Setup Service Pack V2.2.4 (not installed)
- Shipped with the INCA Service Pack, but manual installation required:
- INCA-MIP V7.2.4 (manual installation, see important notes above)
 - MDF Shell Extension V2.0.5 (manual installation, see important notes above)

Note: MDA 8 is available on the ETAS Download Page

In addition required:

- HSP V11.4.0 (available on the ETAS Download Center)

3.17.2 Known issues and important hints

Very important: After the installation a reboot of the computer system is required. This is also true for hotfix installations.

INCA Add-Ons (or INCA engineering Add-Ons) which are not part of the INCA Service Pack has to be updated manually to avoid unexpected behavior. Not updated Add-Ons might lead to system errors or wrong results.

3.17.3 Solved known issue and important hints

#557647 INCA V7.2.3 and INCA Add-Ons and MDA V7.2.3 does not install with system user.

#555003 INCA 7.2 SP 3.1 / INCA V7.2.3 performs an unexpected restart during installation. Workaround: If Microsoft Visual C++ 2015 Redistributable (x86) are not installed, install them and reboot computer before installation of INCA 7.2 SP3.1/SP3.2.

Note: Issue does not occur, if INCA 7.2.0 or higher is already installed on a system. Hint to fix in case of this issue happened already: Uninstall INCA 7.2 SP3.1 manually (via Program & Features). The VC++- Redistributable will not be removed with this uninstallation. After the manual uninstallation INCA could be installed.

#556238 INCA 7.2 SP 3.1 / INCA V7.2.3: Time Domain Handler gets an error 0x80002004 while trying to find dynamic domains via TDM API

In this case IEEE1588 is not supported.

Workaround: If Microsoft Visual C++ 2012 Redistributable (x86) are not installed, install them and reboot computer before installation of INCA 7.2 SP3.1/SP3.2.

#554017 ETK Tools V4.1.4: XCT: Search for Hardware fails

Additional Search for Hardware after the first one failed:

XCT does not respond to user requests anymore and needs to be closed with task manager. Afterwards it is not possible to start XCT again and restart of PC is needed.

3.17.4 Changed installations, major bug fixes and improvements

Updated with INCA V7.2 SP4

- All but MDF Shell Extension V2.0.5

New shipped INCA V7.2 SP4

- NA

New Features and bugfixes with INCA V7.2 SP4

- See solved known issue and important hints, please.
- #558315 ServicePackInstaller: Installer misses AddOns in case of downgrade of one product (e.g. ETK Tools)
- # 552978 ServicePackInstaller could be closed by ALT+F4 during installation sequence
- #552975 ServicePackInstaller does not interrupt/abort installation in case a package installation fails
- #552969 ServicePackInstaller: Returned error code is 0 despite package installation returns an error

3.18 INCA V7.2 SP 3.2

INCA V7.2 SP3.2 is only a minor change compared to INCA V7.2 SP3.1. Solved known issues, enhancements see also section INCA V7.2 SP3 and SP3.1, please.

3.18.1 Content of Service Pack and recommended installation

- INCA V7.2.3.115

Free general INCA Add-Ons:

- INCA AddOn Daisy-Chain ES4xx V7.2.3.104
- INCA AddOn Daisy-Chain V7.2.3.106
- INCA AddOn Daisy-Chain V7.2.3.100
- INCA AddOn ES5xx V7.2.3.97
- INCA AddOn ES9xx V7.2.3.97
- INCA AddOn 3rd Party Hardware V7.2.3.97
- INCA AddOn eCDM V7.2.3.97
- INCA AddOn DriveRecorder V7.2.3.103
- INCA AddOn KID V7.2.3.97
- INCA AddOn Video Tutorials V7.2.3.98

Licensed INCA Add-Ons

- INCA AddOn MCE V7.2.3.97
- INCA AddOn FlexRay V7.2.3.97
- INCA AddOn LIN V7.2.3.97
- INCA AddOn QM-Basic V7.2.3.97
- INCA AddOn EIP V7.2.3.97
- INCA AddOn SIP V7.2.3.99
- INCA AddOn ODX V7.2.3.101
- INCA AddOn CAN-Transmit V7.2.3.99

Further ETAS Products:

- MDA V7.2.3.50
- ETK Tools V4.1.3 (same version like shipped with INCA V7.2 SP3.1)
- Setup Service Pack V2.2.3 (not installed)

Shipped with the INCA Service Pack, but manual installation required:

- MDF Shell Extension V2.0.5 (manual installation, see important notes above)
- INCA-MIP V7.2.3.102 (manual installation, see important notes above)

Note: 4th digit added to version number to distinguish from installations shipped with INCA V7.2 SP3.1.

Note: MDA 8 is available on the ETAS Download Page

In addition required:

- HSP V11.3.2 (available on the ETAS Download Center)
See also next section, "known issues and important hints", to the enhanced fast raster support.

3.18.2 Known issues and important hints

See also solved known issues of INCA V7.2 SP3 and SP3.1

Very important: After the installation a reboot of the computer system is required. This is also true for hotfix installations.

INCA Add-Ons (or INCA engineering Add-Ons) which are not part of the INCA Service Pack has to be updated manually to avoid unexpected behavior. Not updated Add-Ons might lead to system errors or wrong results.

#555003 INCA 7.2 SP 3.1 / INCA V7.2.3 performs an unexpected restart during installation. Workaround: If Microsoft Visual C++ 2015 Redistributable (x86) are not installed, install them and reboot computer before installation of INCA 7.2 SP3.1/SP3.2.

Note: Issue does not occur, if INCA 7.2.0 or higher is already installed on a system. Hint to fix in case of this issue happened already: Uninstall INCA 7.2 SP3.1 manually (via Program & Features). The VC++- Redistributable will not be removed with this uninstallation. After the manual uninstallation INCA could be installed.

#556238 INCA 7.2 SP 3.1 / INCA V7.2.3: Time Domain Handler gets an error 0x80002004 while trying to find dynamic domains via TDM API

In this case IEEE1588 is not supported.

Workaround: If Microsoft Visual C++ 2012 Redistributable (x86) are not installed, install them and reboot computer before installation of INCA 7.2 SP3.1/SP3.2.

Both installations issues (#555003 and #556238) will be solved with INCA 7.2 SP 4 / INCA V7.2.4.

3.18.3 Solved known issue and important hints

#557647 INCA V7.2.3 and INCA Add-Ons and MDA V7.2.3 does not install with system user.

Note: Solution required a rebuild of INCA V7.2.3, all INCA Add-Ons and MDA V7.2.3 without any other functional change.

4th digit added to version number to distinguish from installations shipped with INCA V7.2 SP3.1.

3.18.4 Changed installations, major bug fixes and improvements

Changed with INCA V7.2 SP3.2

- All product installations of the SP3.2 rebuild to solve the installation issue #557647, but content of the installations was not changed.
Two exceptions:
 - o ETK Tools V4.1.3 no rebuild required
 - o INCA V7.2.3.115 contains also the solution for the KIR issue #555302 Wrong multiple cells selection in Scalar Table Window

3.19 INCA V7.2 SP 3.1

INCA V7.2 SP3.1 is only a minor change compared to INCA V7.2 SP3. Solved known issues, enhancements see section INCA V7.2 SP3, please.

3.19.1 Content of Service Pack and recommended installation

- INCA V7.2.3
- Free general INCA Add-Ons:
- INCA AddOn Daisy-Chain ES4xx V7.2.3
 - INCA AddOn Daisy-Chain V7.2.3
 - INCA AddOn Daisy-Chain V7.2.3
 - INCA AddOn ES5xx V7.2.3
 - INCA AddOn ES9xx V7.2.3
 - INCA AddOn 3rd Party Hardware V7.2.3
 - INCA AddOn eCDM V7.2.3
 - INCA AddOn DriveRecorder V7.2.3
 - INCA AddOn KID V7.2.3
 - INCA AddOn Video Tutorials V7.2.3
- Licensed INCA Add-Ons
- INCA AddOn MCE V7.2.3
 - INCA AddOn FlexRay V7.2.3
 - INCA AddOn LIN V7.2.3
 - INCA AddOn QM-Basic V7.2.3
 - INCA AddOn EIP V7.2.3
 - INCA AddOn SIP V7.2.3
 - INCA AddOn ODX V7.2.3
 - INCA AddOn CAN-Transmit V7.2.3
- Further ETAS Products:
- MDA V7.2.3

- ETK Tools V4.1.3 (see known issues with INCA V7.2 SP3.1)
- Setup Service Pack V2.2.3 (not installed)

Shipped with the INCA Service Pack, but manual installation required:

- MDF Shell Extension V2.0.5 (manual installation, see important notes above)
- INCA-MIP V7.2.3 (manual installation, see important notes above)

Note: MDA 8 is available on the ETAS Download Page

In addition required:

- HSP V11.3.0 (available on the ETAS Download Center)
See also next section, "known issues and important hints", to the enhanced fast raster support.

3.19.2 Known issues and important hints

See also solved known issues of INCA V7.2 SP3

#554017 ETK Tools V4.1.4: XCT: Search for Hardware fails
Additional Search for Hardware after the first one failed:
XCT does not respond to user requests anymore and needs to be closed with task manager.
Afterwards it is not possible to start XCT again and restart of PC is needed.
ETK Tools V4.1.4 removed from INCA V7.2 SP3.1 and replaced by former released ETK Tools V4.1.3.

3.19.3 Changed installations, major bug fixes and improvements

Changed with INCA V7.2 SP3.1

- ETK Tools V4.1.4 removed
- ETK Tools V4.1.3 added

3.20 INCA V7.2 SP 3

3.20.1 Content of Service Pack and recommended installation

- INCA V7.2.3

Free general INCA Add-Ons:

- INCA AddOn Daisy-Chain ES4xx V7.2.3
- INCA AddOn Daisy-Chain V7.2.3
- INCA AddOn Daisy-Chain V7.2.3
- INCA AddOn ES5xx V7.2.3
- INCA AddOn ES9xx V7.2.3
- INCA AddOn 3rd Party Hardware V7.2.3
- INCA AddOn eCDM V7.2.3
- INCA AddOn DriveRecorder V7.2.3

- INCA AddOn KID V7.2.3
- INCA AddOn Video Tutorials V7.2.3

Licensed INCA Add-Ons

- INCA AddOn MCE V7.2.3
- INCA AddOn FlexRay V7.2.3
- INCA AddOn LIN V7.2.3
- INCA AddOn QM-Basic V7.2.3
- INCA AddOn EIP V7.2.3
- INCA AddOn SIP V7.2.3
- INCA AddOn ODX V7.2.3
- INCA AddOn CAN-Transmit V7.2.3

Further ETAS Products:

- MDA V7.2.3
- ETK Tools V4.1.4
- Setup Service Pack V2.2.3 (not installed)

Shipped with the INCA Service Pack, but manual installation required:

- MDF Shell Extension V2.0.5 (manual installation, see important notes above)
- INCA-MIP V7.2.3 (manual installation, see important notes above)

Note: MDA 8 is available on the ETAS Download Page

In addition required:

- HSP V11.3.0 (available on the ETAS Download Center)
See also next section, "known issues and important hints", to the enhanced fast raster support.

3.20.2 Known issues and important hints

Very important: After the installation a reboot of the computer system is required. This is also true for hotfix installations.

INCA Add-Ons (or INCA engineering Add-Ons) which are not part of the INCA Service Pack has to be updated manually to avoid unexpected behavior. Not updated Add-Ons might lead to system errors or wrong results.

3.20.3 Solved known issues and important hints

#548511 INCAV7.2 SP2: INCA MIP Repair Problem

The repair mode with INCA V7.2 SP2 with the Setup_ServicePack.exe is not working correctly. Consequently INCA-MIP V7.2.2 was removed from automatic installation with INCA V7.2 SP2.1 like with all former INCA Service Packs. INCA-MIP has to be installed manually.

It is also not recommended to use the Windows mechanism to repair INCA – MIP as additional folder will be created.

#547448 INCA, INCA Hotfix, INCA Add-Ons, MDA, ETK Tool: "Re-Install mode" of the products of the INCA SP is not working correctly.

It might happen, that it is not possible to install the corresponding product after the Re-Installation (repair) (e.g. the same product version or the next product version).

To avoid this, the "Re-Install mode" (repair) function is disabled in the Setup_ServicePack GUI and in silent mode (via parameter) until issue is solved in the products shipped with the INCA Service Pack.

Workaround: In case, installation is possible if installed from the same source/directory like the first installation.

#534258 It is not possible to load variables to different pattern when 100us is in use with FETK on ES891

With INCA V7.2.2 HF2 and HSP 11.2.2 the fast raster support is improved for all FETK and ETK-S20/21 in FETK mode.

Use of INCA V7.2.2 HF2 or higher is recommended only with HSP 11.2.2 or higher for all FETK or ETK-S20/21 in FETK mode.

Otherwise some measurement data might be missed in case of fast raster.

#549716 HSP V11.2.0 and HSP V11.2.1: Update or ES581.4 makes device unusable

The USB Driver version 1.0.0.261 contained in HSP V11.2.0 and HSP V11.2.1 causes in some cases an erroneous update of the ES581.4. In worst case the device is unusable after this operation.

To prevent this issue the USB driver version 1.0.0.257 shall be used. This is contained in HSP V11.1.0, HSP V11.1.1, HSP V11.2.2 and HSP V11.3.0 and higher.

3.20.4 Changed installations, major bug fixes and improvements




Updated with INCA V7.2 SP3

- All but MDF Shell Extension V2.0.5

New shipped INCA V7.2 SP3

- INCA AddOn DriveRecorder V7.2.3

New Features and bugfixes with INCA V7.2 SP3

- See solved known issue and important hints, please.
- Setup_ServicePack V2.2.3.98
 - o Downgrade to the current INCA V7.2 Service Pack
 - o Version of the Setup is now displayed and logged in log files
 - o Up and downgrade visualized with Icons.
 - In case of upgrade  is displayed.
 - In case of downgrade  is displayed.
 - o The Setup got a new icon: 
 - o #548431 Package name in SP installer for Hotfix shows "INCA" only. Now "Hotfix" displayed.

- #407364 No information during start of SP that it is running and working
Added Service Pack Installer icon in "Notification Area" for notifying users.
 - On Start: A balloon appears for 2 sec showing Service Pack Installer Loading...
 - On hover over icon: "Service Pack Installer" will be displayed
- #519048 Documentation of Service Pack not copied on computer and not linked to Start Menu
- #548035 Service Pack Installer uninstalls INCA wrongly during downgrade of another product of the Service Pack
- #537058 MDA appears up-to-date in SP installer although MDA was not yet installed
- #552515 Setup Service Pack does not recognize a needed downgrade. HF not installed
- #551885 Downgrade with re-install mode lead into an error due to repair-mode is used for uninstall of newer package
- #551687 New added package (add-on) in Re-Install will lead into an error due to it will be tried to installed in repair-mode
- #551317 Rendering issue when resize window to min. size
- #550432 Another Icon was introduced with fix of call#548441 - exchange with default Icon for installation
- #548441 Setup Service Pack is too animated - in case of required reinstallation
- #547448 INCA, INCA Hotfix, INCA Add-Ons, MDA, ETK Tool: "Re-Install mode" of the products of the INCA SP is not working correctly.
- #549777 Dead-lock in case of down date and "Re-Install mode" selected
- #549772 Translation issue for command-line-parameters on help-screen

3.21 INCA V7.2 SP 2.2

3.21.1 Content of Service Pack and recommended installation

- INCA V7.2.2

- INCA V7.2.2 HF2

Free general INCA Add-Ons:

- INCA AddOn Daisy-Chain ES4xx V7.2.2
- INCA AddOn Daisy-Chain V7.2.2
- INCA AddOn Daisy-Chain V7.2.2
- INCA AddOn ES5xx V7.2.2
- INCA AddOn ES9xx V7.2.2
- INCA AddOn 3rd Party Hardware V7.2.2
- INCA AddOn eCDM V7.2.2
- INCA AddOn DriveRecorder V7.2.2
- INCA AddOn KID V7.2.2
- INCA AddOn Video Tutorials V7.2.2

Licensed INCA Add-Ons

- INCA AddOn MCE V7.2.2
- INCA AddOn FlexRay V7.2.2
- INCA AddOn LIN V7.2.2
- INCA AddOn QM-Basic V7.2.2

- INCA AddOn EIP V7.2.2
- INCA AddOn SIP V7.2.2
- INCA AddOn ODX V7.2.2
- INCA AddOn CAN-Transmit V7.2.2

Further ETAS Products:

- MDA V7.2.2
- ETK Tools V4.1.3
- Setup Service Pack V2.2.3 (not installed)

Shipped with the INCA Service Pack, but manual installation required:

- MDF Shell Extension V2.0.5 (manual installation, see important notes above)
- INCA-MIP V7.2.2 (manual installation, see important notes above)

Note: MDA 8 is available on the ETAS Download Page

In addition required:

- HSP V11.2.2 (available on the ETAS Download Center)
See also next section, "known issues and important hints", to the enhanced fast raster support.

3.21.2 Known issues and important hints

Very important: After the installation a reboot of the computer system is required. This is also true for hotfix installations.

INCA Add-Ons (or INCA engineering Add-Ons) which are not part of the INCA Service Pack has to be updated manually to avoid unexpected behavior. Not updated Add-Ons might lead to system errors or wrong results.

#549716 HSP V11.2.0 and HSP V11.2.1: Update or ES581.4 makes device unusable

The USB Driver version 1.0.0.261 contained in HSP V11.2.0 and HSP V11.2.1 causes in some cases an erroneous update of the ES581.4. In worst case the device is unusable after this operation.

To prevent this issue the USB driver version 1.0.0.257 shall be used. This is contained in HSP V11.1.0, HSP V11.1.1 and in the HSP V11.2.2.

#534258 It is not possible to load variables to different pattern when 100us is in use with FETK on ES891

With INCA V7.2.2 HF2 and HSP 11.2.2 the fast raster support is improved for all FETK and ETK-S20/21 in FETK mode.

Use of INCA 7.2.2 HF2 is recommended only with HSP 11.2.2 and up for all FETK or ETK-S20/21 in FETK mode.

Otherwise some measurement data might be missed in case of fast raster.

EHI #547448 INCA, INCA Hotfix, INCA Add-Ons, MDA, ETK Tool: "Re-Install mode" of the products of the INCA SP is not working correctly.

It might happen, that it is not possible to install the corresponding product after the Re-Installation (repair) (e.g. the same product version or the next product version).

To avoid this, the "Re-Install mode" (repair) function is disabled in the Setup_ServicePack GUI and in silent mode (via parameter) until issue is solved in the products shipped with the INCA Service Pack.

Workaround: In case, installation is possible if installed from the same source/directory like the first installation.

The solution is planned for INCA V7.2 SP3.

#550426 ES720 Drive Recorder: Deactivated "Stop Trigger" from INCA V7.2.2 is not respected in INCA V7.1.x

ES720 Driver Recorder with INCA V7.1.x software does not respect the stop trigger exported from INCA V7.2 and evaluate it wrongly.

Workaround: Remove the "Stop Trigger" condition in INCA V7.2 before the export for the drive recorder.

3.21.3 Changed installations, major bug fixes and improvements




Updated with INCA 7.2 SP2.2

- INCA V7.2.2HF1 to INCA V7.2.2 HF2
- Setup Service Pack V2.2.3

New shipped INCA 7.2 SP2.2

- INCA AddOn DriveRecorder V7.2.2

New Features and bugfixes with INCA 7.2 SP2.2

- Setup_ServicePack V2.2.3
 - o Version now displayed and logged in log files
 - o Up and downgrade visualized with Icons.
 - In case of upgrade  is displayed.
 - In case of downgrade  is displayed.
 - o Also a new icon for the Setup: 
 - o #548431 Package name in SP installer for Hotfix shows "INCA" only. Now "Hotfix" displayed.
 - o #407364 Setup Service Pack - No information during start of SP that it is running and working
Added Service Pack Installer icon in "Notification Area" for notifying users.
On Start: A balloon appears for 2 sec showing Service Pack Installer Loading...
On hover over icon: "Service Pack Installer" will be displayed
 - o #548035 Service Pack installer uninstalls INCA wrongly during downgrade of another product of the Service Pack

3.22 INCA V7.2 SP 2.1

3.22.1 Content of Service Pack and recommended installation

- INCA V7.2.2
- INCA V7.2.2 HF1

Free general INCA Add-Ons:

- INCA AddOn Daisy-Chain ES4xx V7.2.2
- INCA AddOn Daisy-Chain V7.2.2
- INCA AddOn Daisy-Chain V7.2.2
- INCA AddOn ES5xx V7.2.2
- INCA AddOn ES9xx V7.2.2
- INCA AddOn 3rd Party Hardware V7.2.2
- INCA AddOn eCDM V7.2.2
- INCA AddOn KID V7.2.2
- INCA AddOn Video Tutorials V7.2.2

Licensed INCA Add-Ons

- INCA AddOn MCE V7.2.2
- INCA AddOn FlexRay V7.2.2
- INCA AddOn LIN V7.2.2
- INCA AddOn QM-Basic V7.2.2
- INCA AddOn EIP V7.2.2
- INCA AddOn SIP V7.2.2
- INCA AddOn ODX V7.2.2
- INCA AddOn CAN-Transmit V7.2.2

Further ETAS Products:

- MDA V7.2.2
- ETK Tools V4.1.3

Shipped with the INCA Service Pack, but manual installation required:

- MDF Shell Extension V2.0.5 (manual installation, see important notes above)
- INCA-MIP V7.2.2 (manual installation, see important notes above)

Note: MDA 8 is available on the ETAS Download Page

In addition required:

- HSP V11.2.0 (available on the ETAS Download Center)

3.22.2 Known issues and important hints

Very important: After the installation a reboot of the computer system is required. This is also true for hotfix installations.

INCA Add-Ons (or INCA engineering Add-Ons) which are not part of the INCA Service Pack has to be updated manually to avoid unexpected behavior. Not updated Add-Ons might lead to system errors or wrong results.

#548511 INCAV7.2 SP2: INCA MIP Repair Problem

The repair mode with INCA V7.2 SP2 with the Setup_ServicePack.exe is not working correctly. Consequently INCA-MIP V7.2.2 was removed from automatic installation with INCA V7.2 SP2.1 like with all former Service Packs. INCA-MIP has to be installed manually.

It is also not recommended to use the Windows mechanism to repair INCA – MIP as additional folder will be created.

3.22.3 Changed installations, major bug fixes and improvements

Updated with INCA 7.2 SP2.1

- INCA V7.2.2 to INCA V7.2.2 HF1
- Setup Service Pack
- Removed INCA-MIP V7.2.2 from automatic installation of the Service Pack and back to manual installation (same like before INCA V7.2 SP2)

New shipped INCA 7.2 SP2.1

- NA

New Features and bugfixes with INCA 7.2 SP2.1

- See INCA 7.2 SP1.2: It is now also possible to downgrade to this SP2.1 form a higher SP version (like INCA V7.2 SP3)
- TFS #547915 Setup Service Pack - Help / Warning in case of Language selected/changed no longer displayed.

3.23 INCA V7.2 SP 2

3.23.1 Content of Service Pack and recommended installation

- INCA V7.2.2
- Free general INCA Add-Ons:
- INCA AddOn Daisy-Chain ES4xx V7.2.2
 - INCA AddOn Daisy-Chain V7.2.2
 - INCA AddOn Daisy-Chain V7.2.2
 - INCA AddOn ES5xx V7.2.2
 - INCA AddOn ES9xx V7.2.2
 - INCA AddOn 3rd Party Hardware V7.2.2
 - INCA AddOn eCDM V7.2.2
 - INCA AddOn KID V7.2.2

- INCA AddOn Video Tutorials V7.2.2

Licensed INCA Add-Ons

- INCA AddOn MCE V7.2.2
- INCA AddOn FlexRay V7.2.2
- INCA AddOn LIN V7.2.2
- INCA AddOn QM-Basic V7.2.2
- INCA AddOn EIP V7.2.2
- INCA AddOn SIP V7.2.2
- INCA AddOn MIP V7.2.2
- INCA AddOn ODX V7.2.2
- INCA AddOn CAN-Transmit V7.2.2

Further ETAS Products:

- MDA V7.2.2
- ETK Tools V4.1.3

Shipped with the INCA Service Pack, but manual installation required:

- MDF Shell Extension V2.0.5 (manual installation, see important notes above)

Note: MDA 8 is available on the ETAS Download Page

In addition required:

- HSP V11.2.0 (available on the ETAS Download Center)

3.23.2 Known issues and important hints

Very important: After the installation a reboot of the computer system is required. This is also true for hotfix installations.

INCA Add-Ons (or INCA engineering Add-Ons) which are not part of the INCA Service Pack has to be updated manually to avoid unexpected behavior. Not updated Add-Ons might lead to system errors or wrong results.

3.23.3 Changed installations, major bug fixes and improvements

Updated with INCA 7.2 SP2

- All but MDF Shell Extension V2.0.5

New shipped INCA 7.2 SP2

- NA

New Features with INCA 7.2 SP2

- INCA-AddOn MIP V7.2.2
No longer manual installation but added to automatic installation of the Service Pack Installer.

3.24 INCA V7.2 SP 1.2

3.24.1 Content of Service Pack and recommended installation

- INCA V7.2.1
 - INCA V7.2.1 HF1
- Free general INCA Add-Ons:
- ES4xx Add-on V7.2.1
 - ES6xx Add-on V7.2.1
 - ES93x Add-on V7.2.1
 - INCA_AddOn_ES5xx V7.2.1
 - INCA_AddOn_ES9xx V7.2.1
 - INCA Add-on 3rd Party Hardware V7.2.1
 - INCA-AddOn eCDM V7.2.1
 - INCA-AddOn KID V7.2.1
 - INCA Add-On Video Tutorials V7.2.1

Licensed INCA Add-Ons

- INCA-AddOn MCE V7.2.1
- INCA-AddOn FlexRay V7.2.1
- INCA-AddOn LIN V7.2.1
- INCA-AddOn QM-Basic V7.2.1
- INCA_AddOn EIP V7.2.1
- INCA-AddOn SIP V7.2.1
- INCA-AddOn ODX V7.2.1
- INCA-AddOn CAN-Transmit V7.2.1

Further ETAS Products:

- MDA V7.2.1 Build 233
- ETK Tools V4.1.2

Shipped with the INCA Service Pack, but manual installation required:

- MDF Shell Extension V2.0.5 (manual installation, see important notes above)
- INCA-MIP V7.2.1 (manual installation, see important notes above)

Note: MDA 8 preview SP3 is available on the ETAS Download Page

In addition required:

- HSP V11.1.0 (available on the ETAS Download Center or on 7.2.1 DVD)

3.24.2 Known issues and important hints

Very important: After the installation a reboot of the computer system is required. This is also true for hotfix installations.

INCA Add-Ons (or INCA engineering Add-Ons) which are not part of the INCA Service Pack has to be updated manually to avoid unexpected behavior. Not updated Add-Ons might lead to system errors or wrong results.

INCA-MIP cannot be installed automatically, as it requires the user to select his specific MATLAB version.

If you need to install INCA-MIP, please execute `\MIP\INCA-MIP.exe` for manual installation.

3.24.3 Changed installations, major bug fixes and improvements

Updated with INCA 7.2 SP1.2

- INCA V7.2.1 to V7.2.1 HF1
- Setup Service Pack

New shipped INCA 7.2 SP1.2

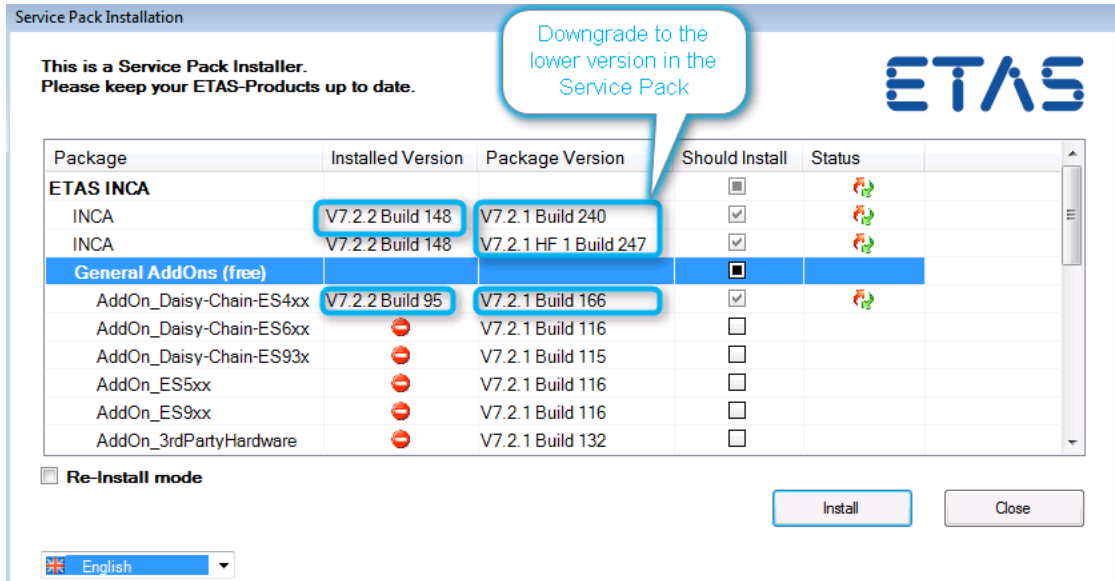
- INCA V7.2.1 HF1

Not shipped with INCA 7.2 SP1.2

- See SP1

New Features

- Setup Service Pack:
 - Support of MSI based INCA hotfix installations (e.g. INCA V7.2.1 HF1)
 - Downgrade to the current INCA V7.2 Service Pack, e.g. from INCA V7.2 SP2 to this Service Pack (INCA V7.2 SP1.2) like displayed in the fig. below. The former and new version is displayed like usual, but in this case the new installed version will be lower than before.
Note: Additional installations not part of the Service Pack (e.g. engineering Add-Ons) have to be installed additionally.



3.25 INCA V7.2 SP 1.1

3.25.1 Content of Service Pack and recommended installation

- INCA V7.2.1
- Free general INCA Add-Ons:
 - ES4xx Add-on V7.2.1
 - ES6xx Add-on V7.2.1
 - ES93x Add-on V7.2.1
 - INCA_AddOn_ES5xx V7.2.1
 - INCA_AddOn_ES9xx V7.2.1
 - INCA Add-on 3rd Party Hardware V7.2.1
 - INCA-AddOn eCDM V7.2.1
 - INCA-AddOn KID V7.2.1
 - INCA Add-On Video Tutorials V7.2.1
- Licensed INCA Add-Ons
 - INCA-AddOn MCE V7.2.1
 - INCA-AddOn FlexRay V7.2.1
 - INCA-AddOn LIN V7.2.1
 - INCA-AddOn QM-Basic V7.2.1
 - INCA_AddOn EIP V7.2.1
 - INCA-AddOn SIP V7.2.1
 - INCA-AddOn ODX V7.2.1
 - INCA-AddOn CAN-Transmit V7.2.1

Further ETAS Products:

- MDA V7.2.1 Build 233
- ETK Tools V4.1.2

Shipped with the INCA Service Pack, but manual installation required:

- MDF Shell Extension V2.0.5 (manual installation, see important notes above)
- INCA-MIP V7.2.1 (manual installation, see important notes above)

Note: MDA 8 preview SP3 is available on the ETAS Download Page

In addition required:

- HSP V11.1.0 (available on the ETAS Download Center or on 7.2.1 DVD)

3.25.2 Known issues and important hints

Very important: After the installation a reboot of the computer system is required. This is also true for hotfix installations.

INCA Add-Ons (or INCA engineering Add-Ons) which are not part of the INCA Service Pack has to be updated manually to avoid unexpected behavior. Not updated Add-Ons might lead to system errors or wrong results.

INCA-MIP cannot be installed automatically, as it requires the user to select his specific MATLAB version.

If you need to install INCA-MIP, please execute `\MIP\INCA-MIP.exe` for manual installation.

3.25.3 Changed installations, major bug fixes and improvements

Updated with INCA 7.2 SP1.1

- MDA V7.2.1 Build 233 with solution for the KIR issue #537369 MDA XDA configuration gets corrupt in case the XDA contains calculated signals

New shipped INCA 7.2 SP1.1

- NA

Not shipped with INCA 7.2 SP1.1

- See SP1

New Features

- NA.

3.26 INCA V7.2 SP 1

3.26.1 Content of Service Pack and recommended installation

- INCA V7.2.1

Free general INCA Add-Ons:

- ES4xx Add-on V7.2.1
- ES6xx Add-on V7.2.1
- ES93x Add-on V7.2.1
- INCA_AddOn_ES5xx V7.2.1
- INCA_AddOn_ES9xx V7.2.1
- INCA Add-on 3rd Party Hardware V7.2.1
- INCA-AddOn eCDM V7.2.1
- INCA-AddOn KID V7.2.1
- INCA Add-On Video Tutorials V7.2.1

Licensed INCA Add-Ons

- INCA-AddOn MCE V7.2.1
- INCA-AddOn FlexRay V7.2.1
- INCA-AddOn LIN V7.2.1
- INCA-AddOn QM-Basic V7.2.1
- INCA_AddOn EIP V7.2.1
- INCA-AddOn SIP V7.2.1
- INCA-AddOn ODX V7.2.1
- INCA-AddOn CAN-Transmit V7.2.1

Further ETAS Products:

- MDA V7.2.1
- ETK Tools V4.1.2

Shipped with the INCA Service Pack, but manual installation required:

- MDF Shell Extension V2.0.5 (manual installation, see important notes above)
- INCA-MIP V7.2.1 (manual installation, see important notes above)

Note: MDA 8 preview SP3 is available on the ETAS Download Page

In addition required:

- HSP V11.1.0 (available on the ETAS Download Center or on 7.2.1 DVD)

3.26.2 Known issues and important hints

Very important: After the installation a reboot of the computer system is required. This is also true for hotfix installations.

INCA Add-Ons (or INCA engineering Add-Ons) which are not part of the INCA Service Pack has to be updated manually to avoid unexpected behavior. Not updated Add-Ons might lead to system errors or wrong results.

INCA-MIP cannot be installed automatically, as it requires the user to select his specific MATLAB version.

If you need to install INCA-MIP, please execute `\MIP\INCA-MIP.exe` for manual installation.

3.26.3 Changed installations, major bug fixes and improvements

Updated with INCA 7.2 SP1

- All but MDF Shell Extension V2.0.5

New shipped INCA 7.2 SP1

- INCA-AddOn CAN-Transmit V7.2.1

Not shipped with INCA 7.2 SP1

- INCA Add-On ES 720
Note: It is planned to ship the new upcoming INCA AddOn DriveRecorder with one of the next INCA 7.2 SPs.

New Features

- NA.

3.27 INCA V7.2.0 Service Pack

3.27.1 Content of Service Pack and recommended installation

- INCA V7.2.0

Free general INCA Add-Ons:

- ES4xx Add-on V7.2.0
- ES6xx Add-on V7.2.0
- ES93x Add-on V7.2.0
- INCA_AddOn_ES5xx V7.2.0
- INCA_AddOn_ES9xx V7.2.0
- INCA Add-on 3rd Party Hardware V7.2.0
- INCA-AddOn eCDM V7.2.0
- INCA-AddOn KID V7.2.0
- INCA Add-On Video Tutorials V7.2.0

Licensed INCA Add-Ons

- INCA-AddOn MCE V7.2.0

- INCA-AddOn FlexRay V7.2.0
- INCA-AddOn LIN V7.2.0
- INCA-AddOn QM-Basic V7.2.0
- INCA_AddOn EIP V7.2.0
- INCA-AddOn SIP V7.2.0
- INCA-AddOn ODX V7.2.0

Further ETAS Products:

- MDA V7.2.0
- ETK Tools V4.1.0

Shipped with the INCA Service Pack, but manual installation required:

- MDF Shell Extension V2.0.5 (manual installation, see important notes above)
- INCA-MIP V7.2.0 (manual installation, see important notes above)

Note: MDA 8 preview SP2 is available on the ETAS Download Page

In addition required:

- HSP V11.0.1 (part of the INCA 7.2.0 DVD or available on the ETAS Download Center)

3.27.2 Known issues and important hints

Very important: After the installation a reboot of the computer system is required. This is also true for hotfix installations.

INCA Add-Ons (or INCA engineering Add-Ons) which are not part of the INCA Service Pack has to be updated manually to avoid unexpected behavior. Not updated Add-Ons might lead to system errors or wrong results.

INCA-MIP cannot be installed automatically, as it requires the user to select his specific MATLAB version.

If you need to install INCA-MIP, please execute `\MIP\INCA-MIP.exe` for manual installation.

3.27.3 Changed installations, major bug fixes and improvements

Updated with INCA 7.2 SP

- All but MDF Shell Extension V2.0.5

New shipped INCA 7.2 SP

- INCA Add-On Video Tutorials V7.2.0

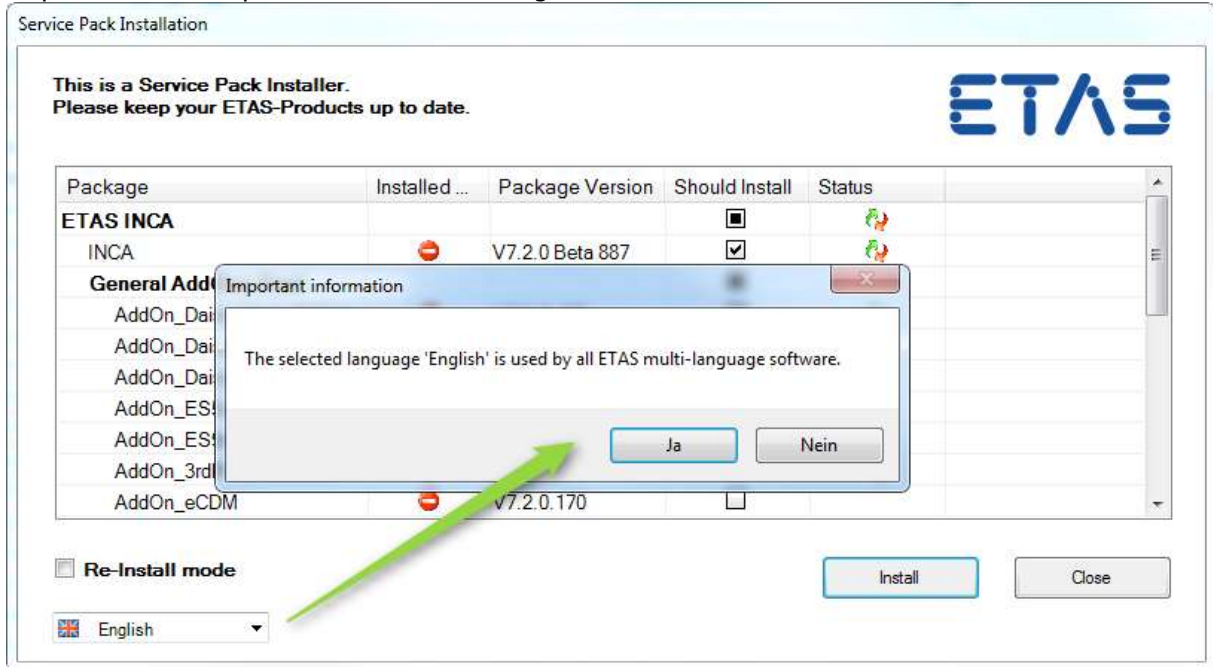
Not shipped with INCA 7.2 SP

- INCA Add-On ES 720

Note: It is planned to ship the new upcoming INCA AddOn DriveRecorder with one of the next INCA 7.2 Service Packs.

New Features

- The language during installation and the ETAS product language can be selected in one step within the Setup Service Pack GUI during installation.



With this option it is also possible to change the ETAS product language of INCA and all ETAS multi-language software after installation.

Note: This is only possible if the registry key HKEY_CURRENT_USER\Software\ETAS\General\Language or HKEY_LOCAL_MACHINE\Software\ETAS\General\Language is not set to a language.

- New order of free and licensed INCA Add-Ons
- It is now possible to install INCA-AddOn LIN V7.2.0 and INCA-AddOn FlexRay V7.2.0 immediately with the Setup Service Pack (operation requires a valid license)
- Possible to install silent and select a set of Add-On-installations which shall be installed automatically (with help of installation.xml-file).

4 Contact, Support and Problem Reporting

For details of your local sales office as well as your local technical support team and product hotlines, take a look at the ETAS website:

ETAS subsidiaries	WWW:	www.etas.com/en/contact.php
ETAS technical support	WWW:	www.etas.com/en/hotlines.php