

# Release Notes

## INCA V7.4 Service Pack 7.1

Release: February 2024

## **Copyright**

---

The data in this document may not be altered or amended without special notification from ETAS GmbH. ETAS GmbH undertakes no further obligation in relation to this document. The software described in it can only be used if the customer is in possession of a general license agreement or single license. Using and copying is only allowed in concurrence with the specifications stipulated in the contract.

Under no circumstances may any part of this document be copied, reproduced, transmitted, stored in a retrieval system, or translated into another language without the express written permission of ETAS GmbH.

© **Copyright** 2024 ETAS GmbH, Stuttgart

The names and designations used in this document are trademarks or brands belonging to the respective owners.

---

# Contents

1	Introduction.....	5
1.1	Definitions and Abbreviations.....	5
1.2	References.....	6
1.3	Conventions.....	6
1.4	User Documentation.....	6
2	Product Definition.....	6
2.1	Functions at a glance.....	6
2.2	General Description.....	7
2.2.1	Safety Notice.....	7
2.2.2	Known Issue Reports.....	7
2.2.3	System Prerequisites.....	7
2.2.4	Software Prerequisites.....	8
2.3	Delivery.....	8
2.4	Installation.....	9
2.4.1	Installation Hints.....	9
2.4.2	Firmware – Hardware Service Pack (HSP).....	9
3	Service Pack Information - Known Issues - New Features and Improvements.....	10
3.1	Important Note to the Installation valid for each Service Pack.....	10
3.2	Known Issues.....	11
3.3	INCA V7.4 SP 7.1.....	12
3.3.1	Content of Service Pack and recommended installation.....	12
3.3.2	Known issues and important hints.....	13
3.3.3	Solved known issue and important hints.....	13
3.3.4	Changed installations, major bug fixes and improvements.....	13
3.4	INCA V7.4 SP 7.....	13
3.4.1	Content of Service Pack and recommended installation.....	13
3.4.2	Known issues and important hints.....	14
3.4.3	Solved known issue and important hints.....	14
3.4.4	Changed installations, major bug fixes and improvements.....	15
3.5	INCA V7.4 SP 6.2.....	15
3.5.1	Content of Service Pack and recommended installation.....	15
3.5.2	Known issues and important hints.....	16
3.5.3	Solved known issue and important hints.....	16
3.5.4	Changed installations, major bug fixes and improvements.....	16
3.6	INCA V7.4 SP 6.1.....	16
3.6.1	Content of Service Pack and recommended installation.....	17
3.6.2	Known issues and important hints.....	17
3.6.3	Solved known issue and important hints.....	18
3.6.4	Changed installations, major bug fixes and improvements.....	18
3.7	INCA V7.4 SP 6.....	18
3.7.1	Content of Service Pack and recommended installation.....	18
3.7.2	Known issues and important hints.....	19
3.7.3	Solved known issue and important hints.....	19
3.7.4	Changed installations, major bug fixes and improvements.....	19
3.8	INCA V7.4 SP 5.....	20
3.8.1	Content of Service Pack and recommended installation.....	20
3.8.2	Known issues and important hints.....	21
3.8.3	Solved known issue and important hints.....	21
3.8.4	Changed installations, major bug fixes and improvements.....	21
3.9	INCA V7.4 SP 4.1.....	21
3.9.1	Content of Service Pack and recommended installation.....	21
3.9.2	Known issues and important hints.....	22

**INCA V7.4 Service Pack 7.1**

Release: February 2024

- 3.9.3 Solved known issue and important hints.....22
- 3.9.4 Changed installations, major bug fixes and improvements.....22
- 3.10 INCA V7.4 SP 4 .....23
  - 3.10.1Content of Service Pack and recommended installation .....23
  - 3.10.2Known issues and important hints .....24
  - 3.10.3Solved known issue and important hints.....24
  - 3.10.4Changed installations, major bug fixes and improvements.....24
- 3.11 INCA V7.4 SP 3.1 .....24
  - 3.11.1Content of Service Pack and recommended installation .....24
  - 3.11.2Known issues and important hints .....25
  - 3.11.3Solved known issue and important hints.....25
  - 3.11.4Changed installations, major bug fixes and improvements.....26
- 3.12 INCA V7.4 SP 3 .....26
  - 3.12.1Content of Service Pack and recommended installation .....26
  - 3.12.2Known issues and important hints .....27
  - 3.12.3Solved known issue and important hints.....27
  - 3.12.4Changed installations, major bug fixes and improvements.....27
- 3.13 INCA V7.4 SP 2.2 .....27
  - 3.13.1Content of Service Pack and recommended installation .....27
  - 3.13.2Known issues and important hints .....28
  - 3.13.3Solved known issue and important hints.....28
  - 3.13.4Changed installations, major bug fixes and improvements.....29
- 3.14 INCA V7.4 SP 2.1 .....29
  - 3.14.1Content of Service Pack and recommended installation .....29
  - 3.14.2Known issues and important hints .....30
  - 3.14.3Solved known issue and important hints.....30
  - 3.14.4Changed installations, major bug fixes and improvements.....30
- 3.15 INCA V7.4 SP 2 .....30
  - 3.15.1Content of Service Pack and recommended installation .....31
  - 3.15.2Known issues and important hints .....31
  - 3.15.3Solved known issue and important hints.....32
  - 3.15.4Changed installations, major bug fixes and improvements.....32
- 3.16 INCA V7.4 SP 1 .....34
  - 3.16.1Content of Service Pack and recommended installation .....34
  - 3.16.2Known issues and important hints .....35
  - 3.16.3Solved known issue and important hints.....35
  - 3.16.4Changed installations, major bug fixes and improvements.....36
- 3.17 INCA V7.4 SP 0 .....36
  - 3.17.1Content of Service Pack and recommended installation .....36
  - 3.17.2Known issues and important hints .....37
  - 3.17.3Solved known issue and important hints.....37
  - 3.17.4Changed installations, major bug fixes and improvements.....37
- 4 Contact, Support and Problem Reporting .....38

# 1 Introduction

---

Dear customer, in this file you will find the latest information about the ETAS INCA Service Pack. The INCA Service Pack will update automatically the most common ETAS INCA products on your computer (included ETAS products see Release Notes below).

For detailed information about the included ETAS products read the corresponding release notes, please.

***Important note:***

***IT IS NECESSARY TO UPDATE ALL FIRMWARE USING THE RECOMMENDED HARDWARE SERVICE PACK (HSP) V13.x PRIOR TO USING INCA V7.4 WITH HARDWARE***

With every new ETAS INCA Service Pack typically also a higher HSP version must be used. For the corresponding version see the release notes below.

As of INCA V7.4 SP2, HSP is part of the INCA Service Pack. Also, the latest recommended HSP version is available on the ETAS Download Page.

## 1.1 Definitions and Abbreviations

---

<b>Term/Abbreviation</b>	<b>Definition</b>
CDM	Calibration Data Manager
EE	INCA Experimental Environment
EHI	ETAS Help Desk International
LiMa	ETAS License Manager
HSP	Hardware Service Pack
HF	Hotfix
HW	Hardware
MDA	INCA Measure and Data Analysis
MIP	Matlab Integration Package
MR	Multi-Recorders
OHI	Open Hardware Integration
OS	Operating System
KIR	<b>Known Issue Report</b> – For severe Problem Reports which occur after a release, ETAS has introduced the Known Issue Report to inform affected customer immediately. The current Known Issues of former versions can be found on the ETAS website: <a href="http://www.etas.com/kir">http://www.etas.com/kir</a>
PR	Problem Report
SP	Service Pack
SW	Software
VSD	Variable Selection Dialog
WB	Walkback, INCA system error

## 1.2 References

---

For further information see the Release Notes of the corresponding products shipped with the INCA Service Pack.

## 1.3 Conventions

---

The following typographical conventions are used in this document:

Choose <b>File</b> → <b>Open</b> .	Menu commands are shown in boldface.
Click <b>OK</b> .	Buttons are shown in boldface.
Press <ENTER>.	Keyboard commands are shown in angled brackets.
The "Open File" dialog box is displayed.	Names of program windows, dialog boxes, fields, etc. are shown in quotation marks.
Select the file <code>setup.exe</code>	Text in drop-down lists on the screen, program code, as well as path- and file names are shown in the Courier font.
A <i>distribution</i> is always a one-dimensional table of sample points.	General emphasis and new terms are set in italics.

## 1.4 User Documentation

---

The INCA user's documentation in PDF format can be found on the DVD or in the installation folder on the PC.

It can be called up from INCA via the menu item ? → **Manuals and Tutorial** or via the Windows start – menu: → **Program** → **ETAS INCA 7.4** → **Manuals and Tutorial**.

## 2 Product Definition

---

### 2.1 Functions at a glance

---

An ETAS INCA Service Pack (SP) is one single ZIP file containing

- Latest version of INCA, the most important related INCA Add-ons, MDA, ETK-Tools and HSP.
- Installation routine, which automatically installs the ETAS products or updates all ETAS products already installed on the user's PC and shipped with the current INCA Service Pack.
- Add-ons, which are not installed on the user's PC, will not be installed / updated automatically but on demand (selection via check box). This may also require a valid license key.
- INCA and the INCA add-ons are available in the ZIP as single / separate installations as well. It is still possible to create user / company specific installations if required. If an add-on is not installed, it could be installed manually by starting the corresponding installation. But this is no longer recommended. Recommended is to use the `Setup_ServicePack` to guarantee that all products are updated to the same release level.
- INCA Refreshes, Hotfixes and add-ons will no longer be available on the download page as single downloads.
- INCA Service Packs are be offered for INCA V7.0 and higher
- The Release Notes, What's New, Updated Manuals and Open Source Software Attribution documentation of INCA and the included INCA add-ons are collected in folder

## INCA V7.4 Service Pack 7.1

Release: February 2024

"Documentation"

After successful installation of the INCA Service Pack with Setup\_ServicePack the complete content of folder "Documentation" is available via

**Program-Menu -> ETAS -> INCA 7.4 ServicePack**

or directly on <INCA 7.4 installation path>\Readme\INCA\_ServicePack.

## 2.2 General Description

---

### 2.2.1 Safety Notice

---

Calibration activities influence the behavior of the ECU and the systems controlled by the ECU. This may result in unexpected behavior of the vehicle and thus can lead to safety critical situations.

Only well trained personnel should be allowed to perform calibration activities.

Sending CAN messages influences the behavior of the CAN bus network and the systems connected to it. This may result in unexpected behavior of the vehicle and thus can lead to safety critical situations.

Only well trained personnel should be allowed to perform CAN message sending activities.

Calibrate measurement (Write to RAM) activities influence the behavior of the ECU and the systems controlled by the ECU. This may result in unexpected behavior of the vehicle and thus can lead to safety critical situations.

Only well trained personnel should be allowed to perform calibrate measurements activities.

**Important:** The ETAS Safety Advice is available for several languages. Please read it carefully.

The ETAS Safety Advice is displayed during start of INCA (Disclaimer) and it is also available in ETAS\_Safety\_Advice.pdf in the folder \Documentation\ReleaseNotes\of the installation package (ZIP file)

or after installation of the INCA Service Pack in

**Program-Menu -> ETAS -> INCA 7.4 ServicePack** in the folder \ReleaseNotes.

### 2.2.2 Known Issue Reports

---

If a product issue develops, ETAS will prepare a Known Issue Report (KIR) and post it on the internet. The report includes information regarding the technical impact and status of the solution. Therefore you must check the KIR applicable to this ETAS product version and follow the relevant instructions prior to operation of the product.

The Known Issue Report (KIR) can be found here:

<http://www.etas.com/kir>

### 2.2.3 System Prerequisites

---

Same like the included INCA refresh, hotfix and add-on installations and INCA related SW. See the Release Notes of the corresponding products shipped with the Service Pack.

2.2.4 **Software Prerequisites**

To update the SW shipped with this INCA Service Pack automatically, the corresponding product has to be installed on the computer. Most of the INCA – add-ons could be installed directly with the Service Pack installer on request, but the DVD/CD of the corresponding product might contain additional tools and documentation.

2.3 **Delivery**

The software is delivered with an installation routine, software, documentation, tools, utilities, and further information. All software documentation (e.g. the Release Notes of the included ETAS products/add-ons) is available in the Portable Document Format (PDF) in the folder \Documentation, which requires Adobe® Reader®.

The Service Pack (ZIP File) contains the following items:

Directory	Meaning / Explanation
<b>Main folder</b> \INCA_V74SP_N	Installations and documentation of INCA V7.4SP N and related SW Important: do not change folder structure below and unzip the complete folder content and structure.
- Start.exe	Guided tour through the content of DVD and Start of the product installation. Note: DVD only.
- Setup_ServicePack.exe	Setup to install/update the included INCA related SW (Refresh, hotfix, add-ons, and related tools) automatically
- Installation.xml	Configuration of the Service Pack installation – preselecting of add-ons which shall be installed. Also for silent installation.
- INCA_V7.n.m_ServicePack-Release_Notes.pdf   - INCA-V7.n-SP-Whats-new.pdf	This Service Pack release notes and additional important information in PDF-format (or TXT-format)
<b>Sub (sub) – Folders</b>	
\Documentation	Release Notes, What’s New, Manuals, etc. of the corresponding installations of the SP and related documentation (e.g. open source software documentation). Includes also last minute changes, known issues. The complete folder is copied to the computer and linked into the Start Menu.
\01_INCA_V7.4.x	INCA Refresh, Hotfix and add-on and the complete documentation of the INCA SP
- \00_INCA74x	The INCA (update) installation
- \..\General AddOns (free)   - \..\Licensed AddOns	The installations of the corresponding INCA add-on refreshes (never change these folders!)
- \MIP   - \NA	Additional installations or tools, e.g. the INCA - AddOn MIP installation (without automatic update/installation via Setup_ServicePack.exe). These installations has to be started manually via double click on installation executable (see release notes for details)
Tools  - \Tool_Name	
\03_MDA_V8.6.x	MDA installation
\05_ETK_Tools_V4.x.y	ETK Tools installation
\07_MDF_Tool_V2.x.y	MDF Shell Extension



## INCA V7.4 Service Pack 7.1

Release: February 2024

\09_HSP_V13.x.y	Hardware Service Pack installation
\Demos	Different videos (DVD only)
\de-DE \en-US \fr-FR \ja-JP \zh-CN \de-CH \HTML	Additional internal tools to support the installation, e.g. national language support of the Setup_ServicePack.exe
01_INCA_V7.4.x\00_Prod_INCA_74x\ Packages\3rdParty	Required 3 <sup>rd</sup> Party installations (like .NET, different versions of vccredist) which are all required for operation of the INCA Service Pack.  Only <b>for IT/Tool coordinators</b> : If installed separately on a computer, these installations can be removed from the INCA Service Pack Installation. Notes: The INCA SP installation might fail if not installed. After installation a reboot is required before installation of the INCA Service Pack.  As the 3 <sup>rd</sup> Party installations might require a reboot, <b>it is recommended to install these 3<sup>rd</sup> Party installations in advance</b> and reboot the computer, to avoid a reboot during the installation of the INCA Service Pack.

## 2.4 Installation

---

### 2.4.1 Installation Hints

---

**Shut down all ETAS SW before updating it with the INCA Service Pack.** Otherwise the installation might be incomplete, stop, or the final installation will not run without issues.

**Important:** After the installation a reboot of the computer system is recommended. Whenever uninstalling INCA, the INCA uninstall program should be used. This ensures that all add-ons and other products installed with INCA are also uninstalled (except ETASData and ETAS License Manager). Never delete files or folders manually. Installation, update to a new or downgrade to a former INCA Service Pack version is also recommended with help of the Setup\_ServicePack.exe.

**Important:** INCA add-ons (or INCA engineering add-ons) which are not part of the INCA Service Pack has to be updated manually to avoid unexpected behavior. Not updated add-ons might lead to system errors or wrong results.

A detailed description of the installation of the INCA Service Pack is available in the INCA\_V7.4\_Install\_Guide\_NN.pdf in the Folder \Documentation\Manuals\of the installation package (ZIP file)

or after installation of the INCA Service Pack in

**Program-Menu -> ETAS -> INCA 7.4 ServicePack** in the folder \Manuals.

### 2.4.2 Firmware – Hardware Service Pack (HSP)

---

Important note:

***IT IS NECESSARY TO UPDATE ALL FIRMWARE USING THE RECOMMENDED HARDWARE SERVICE PACK (HSP) V13.x PRIOR TO USING INCA V7.4 WITH HARDWARE***

With every new INCA Service Pack typically also a higher HSP version must be used.

For the corresponding version see the release notes below.

As of INCA V7.4 SP2, HSP is part of the INCA Service Pack. Also, the latest recommended HSP version is available on the ETAS Download Page. Details on HSP installation see section "HSP Installation with special handling for up-and downgrade" of SP2 below.

### **3 Service Pack Information - Known Issues - New Features and Improvements**

---

This chapter describes changes with respect to the previous version of the INCA Service Pack including version history in reverse order.

#### **What's New**

---

See version history below for a rough overview and changes of the Service Pack itself (including ServicePack\_Installer.exe) but mainly see the *What's New* and *Release Notes* of each product shipped with the Service Pack

#### **3.1 Important Note to the Installation valid for each Service Pack**

---

It is recommended to install, update or down date the INCA Service Pack only with help of the Service Pack Installer of each INCA SP (but no manual selection and installation/update of some of the installed products to avoid incompatibilities). Uninstallation only via the Windows control panel – but no manual deletion of files or folders.

- As of INCA V7.4 SP2, HSP is part of the INCA Service Pack. Also, the latest recommended HSP version is available on the ETAS Download Page. Please update the FW of the used devices.  
Important: With every new INCA Service Pack typically also a higher HSP version must be used. For the corresponding version see the release notes below. Operation of hardware with former firmware version might cause erroneous operation.
- Each of the included installations (add-ons) of the SP is recommended, if the corresponding HW support is required and/or a former version of the add-on was already installed.
- If the products of the SP are installed via Setup\_ServicePack.EXE the products are automatically installed in the recommended order.  
(Manual installation: The recommended installation order is like the release order (or order in the SP), if nothing different is specified in the corresponding readme.txt of the add-ons)
- Some installations (like MIP) cannot be installed automatically, e.g. they require some user input during installation:
- check the ETAS download center for updated versions.
- Details on Service Pack Installation – see also `Setup_ServicePack.pdf` (root of Service Pack folder).

## 3.2 Known Issues

This section describes the general set of known problems of the released version of the INCA Service Pack.

New (solved) known issues of each Service Pack – see also the corresponding section below.

For details and known issues of the included ETAS products and add-ons, check also the corresponding release notes, please.

<b>Problem Number</b>	<b>Title</b>
EHI #519920	<p>INCA/MDA installation fails due to limited disk space during .NET installation</p> <p>Workaround: The installation of .NET requires min. disk space of 5GB before installing INCA or MDA itself. If .NET is not installed, this amount of space is required in addition to the min. required space for the ETAS product installation.</p> <p>It is recommended to install .NET before the INCA Service Pack installation. Source: Either from Microsoft or from installation the following share on the INCA DVD/SP: 01_INCA_V7.4.n\00_Prod_INCA_74n\Packages\3rdParty\DotNetx.y.z Note: Use the latest .Net version shipped with the INCA Service Pack. Reboot the computer after the .NET-installation and before installation of the INCA Service Pack is required.</p>

### 3.3 INCA V7.4 SP 7.1

Details on the Service Pack Installation – see also [INCA\\_V7.4\\_Install\\_Guide\\_xy.pdf](#) in the \Documentation\Manuals - folder

#### 3.3.1 Content of Service Pack and recommended installation

- INCA V7.4.7
- **INCA V7.4.7 HF1 (Build 98)**

Free general INCA Add-Ons:

- INCA AddOn EV-Instruments V7.4.7
- INCA AddOn eCDM V7.4.7
- INCA AddOn DriveRecorder V7.4.7
- INCA AddOn Video Tutorials V7.4.7

Licensed INCA Add-Ons

- INCA AddOn MCE V7.4.7
- INCA AddOn Vector-Hardware V7.4.7
- INCA AddOn FlexRay V7.4.7
- INCA AddOn LIN V7.4.7
- INCA AddOn QM-Basic V7.4.7
- INCA AddOn EIP V7.4.7
- INCA AddOn SIP V7.4.7
- INCA AddOn ODX V7.4.7
- INCA AddOn CAN-Transmit V7.4.7
- INCA AddOn CAN-Trace V7.4.7
- INCA AddOn INCA-VoiceRecorder V7.4.7
- INCA AddOn INCA-TOUCH V7.4.7
- INCA AddOn RDE V1.11.1

Further ETAS Products:

- **MDA V8.6.7 HF1 (Build 538)**
- ETK Tools V4.3.7
- MDF Shell Extension V2.2.0 Build 164
- **HSP V13.7.1 (Build 3)**

Shipped with the INCA Service Pack, but manual installation required:

- INCA-MIP V7.4.7 (manual installation, see important notes above)
- INCA-SOME-IP-MC V7.4.7

- ETAS License Manager V1.8.11 and BOA EBI Distribution Package V2.39  
The ETAS Licence Manager (LiMa) is shipped together with the INCA Service Pack. All ETAS software products share a single installation of the ETAS LiMa. For this reason, LiMa will only be installed if an older version or no version is present on the target computer. Another ETAS software product could update LiMa to a newer version. The same applies to the BOA EBI Distribution Package.

## INCA V7.4 Service Pack 7.1

Release: February 2024

- Setup Service Pack V2.4.6 (not installed)

In addition, the supported hardware must be updated with the appropriate HSP of this Service Pack (the HSP is also available from the ETAS Download Center).

### 3.3.2 Known issues and important hints

- After the installation of the INCA Service Pack a reboot of the computer system is recommended. This is also true for hotfix installations.
- INCA add-ons (or INCA **engineering add-ons**) which are not part of the INCA Service Pack has to be updated manually to avoid unexpected behavior. Not updated Add-ons might lead to system errors or wrong results.

### 3.3.3 Solved known issue and important hints

- See also the INCA Release Notes and Release Notes in \Documentation

### 3.3.4 Changed installations, major bug fixes and improvements

#### Updated products, add-ons, components

- INCA V7.4.7 with INCA V7.4.7 HF1
- MDA V8.6.7 HF1
- HSP V13.7.1

#### New products, add-ons, components

- NA

#### New Features and bug fixes

- NA

## 3.4 INCA V7.4 SP 7

Details on the Service Pack Installation – see also [INCA\\_V7.4\\_Install\\_Guide\\_xy.pdf](#) in the \Documentation\Manuals - folder

### 3.4.1 Content of Service Pack and recommended installation

- INCA V7.4.7

Free general INCA Add-Ons:

- INCA AddOn EV-Instruments V7.4.7
- INCA AddOn eCDM V7.4.7
- INCA AddOn DriveRecorder V7.4.7
- INCA AddOn Video Tutorials V7.4.7

Licensed INCA Add-Ons

- INCA AddOn MCE V7.4.7

## INCA V7.4 Service Pack 7.1

Release: February 2024

- INCA AddOn Vector-Hardware V7.4.7
- INCA AddOn FlexRay V7.4.7
- INCA AddOn LIN V7.4.7
- INCA AddOn QM-Basic V7.4.7
- INCA AddOn EIP V7.4.7
- INCA AddOn SIP V7.4.7
- INCA AddOn ODX V7.4.7
- INCA AddOn CAN-Transmit V7.4.7
- INCA AddOn CAN-Trace V7.4.7
- INCA AddOn INCA-VoiceRecorder V7.4.7
- INCA AddOn INCA-TOUCH V7.4.7
- INCA AddOn RDE V1.11.1

Further ETAS Products:

- MDA V8.6.7
- ETK Tools V4.3.7
- MDF Shell Extension V2.2.0 Build 164
- HSP V13.7.0

Shipped with the INCA Service Pack, but manual installation required:

- INCA-MIP V7.4.7 (manual installation, see important notes above)
- INCA-SOME-IP-MC V7.4.7

- ETAS License Manager V1.8.11 and BOA EBI Distribution Package V2.39  
The ETAS Licence Manager (LiMa) is shipped together with the INCA Service Pack. All ETAS software products share a single installation of the ETAS LiMa. For this reason, LiMa will only be installed if an older version or no version is present on the target computer. Another ETAS software product could update LiMa to a newer version. The same applies to the BOA EBI Distribution Package.
- Setup Service Pack V2.4.6 (not installed)

In addition, the supported hardware must be updated with the appropriate HSP of this Service Pack (the HSP is also available from the ETAS Download Center).

### 3.4.2 Known issues and important hints

- After the installation of the INCA Service Pack a reboot of the computer system is recommended. This is also true for hotfix installations.
- INCA add-ons (or INCA **engineering add-ons**) which are not part of the INCA Service Pack has to be updated manually to avoid unexpected behavior. Not updated Add-ons might lead to system errors or wrong results.

### 3.4.3 Solved known issue and important hints

- See also the INCA Release Notes and Release Notes in \Documentation

### 3.4.4 Changed installations, major bug fixes and improvements

#### *Updated products, add-ons, components*

- All except
  - o INCA AddOn RDE V1.11.1,
  - o MDF Shell Extension V2.2.0
  - o ETAS License Manager V1.8.11
  - o Setup Service Pack V2.4.6

#### *New products, add-ons, components*

- INCA AddOn CAN-Trace V7.4.7
- INCA-SOME-IP-MC V7.4.7

#### *New Features and bug fixes*

- NA

### 3.5 INCA V7.4 SP 6.2

Details on the Service Pack Installation – see also [INCA\\_V7.4\\_Install\\_Guide\\_xy.pdf](#) in the \Documentation\Manuals - folder

#### 3.5.1 Content of Service Pack and recommended installation

- INCA V7.4.6

- **INCA V7.4.6 HF2**

Free general INCA Add-Ons:

- INCA AddOn EV-Instruments V7.4.6
- INCA AddOn eCDM V7.4.6
- INCA AddOn DriveRecorder V7.4.6
- INCA AddOn Video Tutorials V7.4.6

Licensed INCA Add-Ons

- INCA AddOn MCE V7.4.6
- INCA AddOn Vector-Hardware V7.4.6
- INCA AddOn FlexRay V7.4.6
- INCA AddOn LIN V7.4.6
- INCA AddOn QM-Basic V7.4.6
- INCA AddOn EIP V7.4.6
- INCA AddOn SIP V7.4.6
- INCA AddOn ODX V7.4.6
- INCA AddOn CAN-Transmit V7.4.6
- INCA AddOn INCA-VoiceRecorder V7.4.6
- INCA AddOn INCA-TOUCH V7.4.6
- INCA AddOn RDE V1.11.1

## INCA V7.4 Service Pack 7.1

Release: February 2024

Further ETAS Products:

- MDA V8.6.6
- **ETK Tools V4.3.6 Build 110**
- MDF Shell Extension V2.2.0 Build 164
- **HSP V13.6.1**
- ETAS License Manager V1.8.11 and BOA EBI Distribution Package V2.38  
The ETAS Licence Manager (LiMa) is shipped together with the INCA Service Pack. All ETAS software products share a single installation of the ETAS LiMa. For this reason, LiMa will only be installed if an older version or no version is present on the target computer. Another ETAS software product could update LiMa to a newer version. The same applies to the BOA EBI Distribution Package.
- Setup Service Pack V2.4.6 (not installed)

Shipped with the INCA Service Pack, but manual installation required:

- INCA-MIP V7.4.6 (manual installation, see important notes above)

In addition, the supported hardware must be updated with the appropriate HSP of this Service Pack (the HSP is also available from the ETAS Download Center).

### 3.5.2 Known issues and important hints

- After the installation of the INCA Service Pack a reboot of the computer system is recommended. This is also true for hotfix installations.
- INCA add-ons (or INCA **engineering add-ons**) which are not part of the INCA Service Pack has to be updated manually to avoid unexpected behavior. Not updated Add-ons might lead to system errors or wrong results.

### 3.5.3 Solved known issue and important hints

- See also the INCA Release Notes and Release Notes in \Documentation

### 3.5.4 Changed installations, major bug fixes and improvements

*Updated products, add-ons, components*

- INCA V7.4.6 with INCA V7.4.6 HF2, ETK Tools V4.3.6 Build 110 and HSP V13.6.1

*New products, add-ons, components*

- See INCA V7.4 SP6 below

*New Features and bug fixes*

- See INCA V7.4 SP6 below

## 3.6 INCA V7.4 SP 6.1

Details on the Service Pack Installation – see also [INCA\\_V7.4\\_Install\\_Guide\\_xy.pdf](#) in the \Documentation\Manuals - folder



### 3.6.1 Content of Service Pack and recommended installation

- INCA V7.4.6

- **INCA V7.4.6 HF1**

Free general INCA Add-Ons:

- INCA AddOn EV-Instruments V7.4.6
- INCA AddOn eCDM V7.4.6
- INCA AddOn DriveRecorder V7.4.6
- INCA AddOn Video Tutorials V7.4.6

Licensed INCA Add-Ons

- INCA AddOn MCE V7.4.6
- INCA AddOn Vector-Hardware V7.4.6
- INCA AddOn FlexRay V7.4.6
- INCA AddOn LIN V7.4.6
- INCA AddOn QM-Basic V7.4.6
- INCA AddOn EIP V7.4.6
- INCA AddOn SIP V7.4.6
- INCA AddOn ODX V7.4.6
- INCA AddOn CAN-Transmit V7.4.6
- INCA AddOn INCA-VoiceRecorder V7.4.6
- INCA AddOn INCA-TOUCH V7.4.6
- INCA AddOn RDE V1.11.1

Further ETAS Products:

- MDA V8.6.6
- ETK Tools V4.3.6
- MDF Shell Extension V2.2.0 Build 164
- HSP V13.6.0
- ETAS License Manager V1.8.11 and BOA EBI Distribution Package V2.38  
The ETAS Licence Manager (LiMa) is shipped together with the INCA Service Pack. All ETAS software products share a single installation of the ETAS LiMa. For this reason, LiMa will only be installed if an older version or no version is present on the target computer. Another ETAS software product could update LiMa to a newer version. The same applies to the BOA EBI Distribution Package.
- Setup Service Pack V2.4.6 (not installed)

Shipped with the INCA Service Pack, but manual installation required:

- INCA-MIP V7.4.6 (manual installation, see important notes above)

In addition, the supported hardware must be updated with the appropriate HSP of this Service Pack (the HSP is also available from the ETAS Download Center).

### 3.6.2 Known issues and important hints

- After the installation of the INCA Service Pack a reboot of the computer system is recommended. This is also true for hotfix installations.

## INCA V7.4 Service Pack 7.1

Release: February 2024

- INCA add-ons (or INCA **engineering add-ons**) which are not part of the INCA Service Pack has to be updated manually to avoid unexpected behavior. Not updated Add-ons might lead to system errors or wrong results.

### 3.6.3 Solved known issue and important hints

---

- See also the INCA Release Notes and Release Notes in \Documentation

### 3.6.4 Changed installations, major bug fixes and improvements

---

#### *Updated products, add-ons, components*

---

- INCA V7.4.6 with INCA V7.4.6 HF1

#### *New products, add-ons, components*

---

- See INCA V7.4 SP6 below

#### *New Features and bug fixes*

---

- See INCA V7.4 SP6 below

## 3.7 INCA V7.4 SP 6

---

Details on the Service Pack Installation – see also [INCA\\_V7.4\\_Install\\_Guide\\_xy.pdf](#) in the \Documentation\Manuals - folder

### 3.7.1 Content of Service Pack and recommended installation

---

- INCA V7.4.6

Free general INCA Add-Ons:

- INCA AddOn EV-Instruments V7.4.6
- INCA AddOn eCDM V7.4.6
- INCA AddOn DriveRecorder V7.4.6
- INCA AddOn Video Tutorials V7.4.6

Licensed INCA Add-Ons

- INCA AddOn MCE V7.4.6
- INCA AddOn Vector-Hardware V7.4.6
- INCA AddOn FlexRay V7.4.6
- INCA AddOn LIN V7.4.6
- INCA AddOn QM-Basic V7.4.6
- INCA AddOn EIP V7.4.6
- INCA AddOn SIP V7.4.6
- INCA AddOn ODX V7.4.6
- INCA AddOn CAN-Transmit V7.4.6
- INCA AddOn INCA-VoiceRecorder V7.4.6
- INCA AddOn INCA-TOUCH V7.4.6

## INCA V7.4 Service Pack 7.1

Release: February 2024

- INCA AddOn RDE V1.11.1

Further ETAS Products:

- MDA V8.6.6
- ETK Tools V4.3.6
- MDF Shell Extension V2.2.0 Build 164
- HSP V13.6.0
- ETAS License Manager V1.8.11 and BOA EBI Distribution Package V2.38  
The ETAS Licence Manager (LiMa) is shipped together with the INCA Service Pack. All ETAS software products share a single installation of the ETAS LiMa. For this reason, LiMa will only be installed if an older version or no version is present on the target computer. Another ETAS software product could update LiMa to a newer version. The same applies to the BOA EBI Distribution Package.
- Setup Service Pack V2.4.6 (not installed)

Shipped with the INCA Service Pack, but manual installation required:

- INCA-MIP V7.4.6 (manual installation, see important notes above)

In addition, the supported hardware must be updated with the appropriate HSP of this Service Pack (the HSP is also available from the ETAS Download Center).

### 3.7.2 Known issues and important hints

- After the installation of the INCA Service Pack a reboot of the computer system is recommended. This is also true for hotfix installations.
- INCA add-ons (or INCA **engineering add-ons**) which are not part of the INCA Service Pack has to be updated manually to avoid unexpected behavior. Not updated Add-ons might lead to system errors or wrong results.

### 3.7.3 Solved known issue and important hints

- See also the INCA Release Notes and Release Notes in \Documentation

### 3.7.4 Changed installations, major bug fixes and improvements

*Updated products, add-ons, components*

- All products and add-ons updated

*New products, add-ons, components*

- INCA AddOn EV-Instruments V7.4.6
- INCA AddOn RDE V1.11.1

*New Features and bug fixes*

- EULA acceptance in the Service Pack GUI no longer required. Checkbox removed.
- Support of INCA AddOn RDE

### 3.8 INCA V7.4 SP 5

Details on Service Pack Installation – see also [INCA\\_V7.4\\_Install\\_Guide\\_xy.pdf](#) in the \Documentation\Manuals - folder

#### 3.8.1 Content of Service Pack and recommended installation

##### - INCA V7.4.5

Free general INCA Add-Ons:

- INCA AddOn eCDM V7.4.5
- INCA AddOn DriveRecorder V7.4.5
- INCA AddOn Video Tutorials V7.4.5

Licensed INCA Add-Ons

- INCA AddOn MCE V7.4.5
- INCA AddOn Vector-Hardware V7.4.5
- INCA AddOn FlexRay V7.4.5
- INCA AddOn LIN V7.4.5
- INCA AddOn QM-Basic V7.4.5
- INCA AddOn EIP V7.4.5
- INCA AddOn SIP V7.4.5
- INCA AddOn ODX V7.4.5
- INCA AddOn CAN-Transmit V7.4.5
- INCA AddOn INCA-VoiceRecorder V7.4.5
- INCA AddOn INCA-TOUCH V7.4.5

Further ETAS Products:

- MDA V8.6.5
- ETK Tools V4.3.5
- MDF Shell Extension V2.2.0 Build 130
- HSP V13.5.0
- ETAS License Manager V1.8.10 and BOA EBI Distribution Package V2.37  
Together the INCA Service Pack the ETAS License Manager (LiMa) is shipped.  
All ETAS software products are sharing only one installation of the ETAS LiMa. Therefore each product installation installs LiMa only if there is an older or no version available on the target computer. Another ETAS software product might update LiMa to a succeeding version.  
The same is valid for the BOA EBI Distribution Package.
- Setup Service Pack V2.4.5 (not installed)

Shipped with the INCA Service Pack, but manual installation required:

- INCA-MIP V7.4.5 (manual installation, see important notes above)

In addition, the update of the supported HW with the corresponding HSP of this SP is required (available on the ETAS Download Center and integrated in the INCA Service Pack)

## INCA V7.4 Service Pack 7.1

Release: February 2024

### 3.8.2 Known issues and important hints

---

- After the installation of the INCA Service Pack a reboot of the computer system is recommended. This is also true for hotfix installations.
- INCA add-ons (or INCA **engineering add-ons**) which are not part of the INCA Service Pack has to be updated manually to avoid unexpected behavior. Not updated Add-ons might lead to system errors or wrong results.

### 3.8.3 Solved known issue and important hints

---

- See also the INCA Release Notes and Release Notes in \Documentation

### 3.8.4 Changed installations, major bug fixes and improvements

---

#### *Updated products, add-ons, components*

---

- All but MDF Shell Extension V2.2.0

#### *New products, add-ons, components*

---

- NA

#### *New Features and bug fixes*

---

- NA

## 3.9 INCA V7.4 SP 4.1

---

Details on Service Pack Installation – see also [INCA\\_V7.4\\_Install\\_Guide\\_xy.pdf](#) in the \Documentation\Manuals - folder

### 3.9.1 Content of Service Pack and recommended installation

---

#### - **INCA V7.4.4 Build 136**

Free general INCA Add-Ons:

- INCA AddOn eCDM V7.4.4
- INCA AddOn DriveRecorder V7.4.4
- INCA AddOn Video Tutorials V7.4.4

Licensed INCA Add-Ons

- INCA AddOn MCE V7.4.4
- INCA AddOn Vector-Hardware V7.4.4
- INCA AddOn FlexRay V7.4.4
- INCA AddOn LIN V7.4.4
- INCA AddOn QM-Basic V7.4.4
- INCA AddOn EIP V7.4.4
- INCA AddOn SIP V7.4.4
- INCA AddOn ODX V7.4.4
- INCA AddOn CAN-Transmit V7.4.4

## INCA V7.4 Service Pack 7.1

Release: February 2024

- INCA AddOn INCA-VoiceRecorder V7.4.4
- INCA AddOn INCA-TOUCH V7.4.4

Further ETAS Products:

- **MDA V8.6.4/1 Build 644**
- ETK Tools V4.3.4
- MDF Shell Extension V2.2.0
- HSP V13.4.0
- **ETAS License Manager V1.8.9.47** and BOA EBI Distribution Package V2.36  
Together the INCA Service Pack the ETAS License Manager (LiMa) is shipped.  
All ETAS software products are sharing only one installation of the ETAS LiMa. Therefore each product installation installs LiMa only if there is an older or no version available on the target computer. Another ETAS software product might update LiMa to a succeeding version.  
The same is valid for the BOA EBI Distribution Package.
- Setup Service Pack V2.4.4 (not installed)

Shipped with the INCA Service Pack, but manual installation required:

- INCA-MIP V7.4.4 (manual installation, see important notes above)

In addition, the update of the supported HW with the corresponding HSP Version of this SP is required (available on the ETAS Download Center and integrated in the INCA Service Pack)

### 3.9.2 Known issues and important hints

- After the installation of the INCA Service Pack a reboot of the computer system is recommended. This is also true for hotfix installations.
- INCA add-ons (or INCA **engineering add-ons**) which are not part of the INCA Service Pack has to be updated manually to avoid unexpected behavior. Not updated Add-ons might lead to system errors or wrong results.

### 3.9.3 Solved known issue and important hints

- See also the INCA Release Notes and Release Notes in \Documentation
- Important issue *#719387 Export results in empty file* solved with MDA V8.6.4/1 Build 644
- Important issue *#720280 ETAS License Manager: Parallel use of INCA and MDA with a local machine-based license with LiMa V1.8.9 not possible* solved with ETAS License Manager V1.8.9.47 and shipped with INCA V7.4.4 Build 136 and MDA V8.6.4/1 Build 644

### 3.9.4 Changed installations, major bug fixes and improvements

*Updated products, add-ons, components*

- INCA V7.4.4 Build 136
- MDA V8.6.4/1 Build 644

*New products, add-ons, components*

---

- NA

*New Features and bug fixes*

---

- See SP4

### 3.10 INCA V7.4 SP 4

---

Details on Service Pack Installation – see also [INCA\\_V7.4\\_Install\\_Guide\\_xy.pdf](#) in the `\Documentation\Manuals` - folder

#### 3.10.1 Content of Service Pack and recommended installation

---

- INCA V7.4.4 Build 130

Free general INCA Add-Ons:

- INCA AddOn eCDM V7.4.4
- INCA AddOn DriveRecorder V7.4.4
- INCA AddOn Video Tutorials V7.4.4

Licensed INCA Add-Ons

- INCA AddOn MCE V7.4.4
- INCA AddOn Vector-Hardware V7.4.4
- INCA AddOn FlexRay V7.4.4
- INCA AddOn LIN V7.4.4
- INCA AddOn QM-Basic V7.4.4
- INCA AddOn EIP V7.4.4
- INCA AddOn SIP V7.4.4
- INCA AddOn ODX V7.4.4
- INCA AddOn CAN-Transmit V7.4.4
- INCA AddOn INCA-VoiceRecorder V7.4.4
- INCA AddOn INCA-TOUCH V7.4.4

Further ETAS Products:

- MDA V8.6.4
- ETK Tools V4.3.4
- MDF Shell Extension V2.2.0
- HSP V13.4.0
- ETAS License Manager V1.8.9 and BOA EBI Distribution Package V2.36

Together the INCA Service Pack the ETAS License Manager (LiMa) is shipped.

All ETAS software products are sharing only one installation of the ETAS LiMa. Therefore each product installation installs LiMa only if there is an older or no version available on the target computer. Another ETAS software product might update LiMa to a succeeding version.

The same is valid for the BOA EBI Distribution Package.

## INCA V7.4 Service Pack 7.1

Release: February 2024

- Setup Service Pack V2.4.4 (not installed)

Shipped with the INCA Service Pack, but manual installation required:

- INCA-MIP V7.4.4 (manual installation, see important notes above)

In addition, the update of the supported HW with the corresponding HSP V13.3 is required (available on the ETAS Download Center and integrated in the INCA Service Pack)

### 3.10.2 Known issues and important hints

- After the installation of the INCA Service Pack a reboot of the computer system is recommended. This is also true for hotfix installations.
- INCA add-ons (or INCA **engineering add-ons**) which are not part of the INCA Service Pack has to be updated manually to avoid unexpected behavior. Not updated Add-ons might lead to system errors or wrong results.

### 3.10.3 Solved known issue and important hints

- See also the INCA Release Notes and Release Notes in \Documentation

### 3.10.4 Changed installations, major bug fixes and improvements

*Updated products, add-ons, components*

- All but MDF Shell Extension V2.2.0

*New products, add-ons, components*

- NA

*New Features and bug fixes*

- # 706451 Service Pack Installer: HF is not installed in downgrade scenario to V7.4 SP2.2 although SPI shows it was installed

## 3.11 INCA V7.4 SP 3.1

Details on Service Pack Installation – see also [INCA\\_V7.4\\_Install\\_Guide\\_xy.pdf](#) in the \Documentation\Manuals - folder

### 3.11.1 Content of Service Pack and recommended installation

- INCA V7.4.3

Free general INCA Add-Ons:

- INCA AddOn eCDM V7.4.3
- INCA AddOn DriveRecorder V7.4.3
- INCA AddOn Video Tutorials V7.4.3

Licensed INCA Add-Ons

- INCA AddOn MCE V7.4.3



## INCA V7.4 Service Pack 7.1

Release: February 2024

- INCA AddOn Vector-Hardware V7.4.3
- INCA AddOn FlexRay V7.4.3
- INCA AddOn LIN V7.4.3
- INCA AddOn QM-Basic V7.4.3
- INCA AddOn EIP V7.4.3
- INCA AddOn SIP V7.4.3
- INCA AddOn ODX V7.4.3
- INCA AddOn CAN-Transmit V7.4.3
- INCA AddOn INCA-VoiceRecorder V7.4.3
- INCA AddOn INCA-TOUCH V7.4.3

Further ETAS Products:

- MDA V8.6.3
- ETK Tools V4.3.3
- MDF Shell Extension V2.2.0
- **HSP V13.3.2**
- ETAS License Manager V1.8.8 and BOA EBI Distribution Package V2.35  
Together the INCA Service Pack the ETAS License Manager (LiMa) is shipped.  
All ETAS software products are sharing only one installation of the ETAS LiMa. Therefore each product installation installs LiMa only if there is an older or no version available on the target computer. Another ETAS software product might update LiMa to a succeeding version.  
The same is valid for the BOA EBI Distribution Package.
- Setup Service Pack V2.4.3 (not installed)

Shipped with the INCA Service Pack, but manual installation required:

- INCA-MIP V7.4.3 (manual installation, see important notes above)

In addition, the update of the supported HW with the corresponding HSP of this SP is required (available on the ETAS Download Center and integrated in the INCA Service Pack)

### 3.11.2 Known issues and important hints

- After the installation of the INCA Service Pack a reboot of the computer system is recommended. This is also true for hotfix installations.
- INCA add-ons (or INCA **engineering add-ons**) which are not part of the INCA Service Pack has to be updated manually to avoid unexpected behavior. Not updated Add-ons might lead to system errors or wrong results.

### 3.11.3 Solved known issue and important hints

- See also the INCA Release Notes and Release Notes in \Documentation
- Solved (KIR-Issue) with HSP V13.3.2:  
#711507 Read access to the LPDDR2 memory of the FETK-T1.1B returns wrong data at high operating temperatures (110 degree Celsius and above) when using HSP 13.3.0 firmware. Earlier HSP versions are not affected.

3.11.4 Changed installations, major bug fixes and improvements

*Updated products, add-ons, components*

- HSP V13.3.2

*New products, add-ons, components*

- NA

*New Features and bug fixes*

- NA

3.12 INCA V7.4 SP 3

Details on Service Pack Installation – see also [INCA\\_V7.4\\_Install\\_Guide\\_xy.pdf](#) in the \Documentation\Manuals - folder

3.12.1 Content of Service Pack and recommended installation

- INCA V7.4.3

Free general INCA Add-Ons:

- INCA AddOn eCDM V7.4.3
- INCA AddOn DriveRecorder V7.4.3
- INCA AddOn Video Tutorials V7.4.3

Licensed INCA Add-Ons

- INCA AddOn MCE V7.4.3
- INCA AddOn Vector-Hardware V7.4.3
- INCA AddOn FlexRay V7.4.3
- INCA AddOn LIN V7.4.3
- INCA AddOn QM-Basic V7.4.3
- INCA AddOn EIP V7.4.3
- INCA AddOn SIP V7.4.3
- INCA AddOn ODX V7.4.3
- INCA AddOn CAN-Transmit V7.4.3
- INCA AddOn INCA-VoiceRecorder V7.4.3
- INCA AddOn INCA-TOUCH V7.4.3

Further ETAS Products:

- MDA V8.6.3
- ETK Tools V4.3.3
- MDF Shell Extension V2.2.0
- HSP V13.3.0
- ETAS License Manager V1.8.8 and BOA EBI Distribution Package V2.35  
Together the INCA Service Pack the ETAS License Manager (LiMa) is shipped.  
All ETAS software products are sharing only one installation of the ETAS LiMa. Therefore

## INCA V7.4 Service Pack 7.1

Release: February 2024

each product installation installs LiMa only if there is an older or no version available on the target computer. Another ETAS software product might update LiMa to a succeeding version.

The same is valid for the BOA EBI Distribution Package.

- Setup Service Pack V2.4.3 (not installed)

Shipped with the INCA Service Pack, but manual installation required:

- INCA-MIP V7.4.3 (manual installation, see important notes above)

In addition, the update of the supported HW with the corresponding HSP of this SP is required (available on the ETAS Download Center and integrated in the INCA Service Pack)

### 3.12.2 Known issues and important hints

- After the installation of the INCA Service Pack a reboot of the computer system is recommended. This is also true for hotfix installations.
- INCA add-ons (or INCA **engineering add-ons**) which are not part of the INCA Service Pack has to be updated manually to avoid unexpected behavior. Not updated Add-ons might lead to system errors or wrong results.

### 3.12.3 Solved known issue and important hints

- See also the INCA Release Notes and Release Notes in \Documentation

### 3.12.4 Changed installations, major bug fixes and improvements

#### Updated products, add-ons, components

- All but MDF Shell Extension V2.2.0 and ETAS License Manager V1.8.8

#### New products, add-ons, components

- NA

#### New Features and bug fixes

- NA

## 3.13 INCA V7.4 SP 2.2

Details on Service Pack Installation – see also [INCA\\_V7.4\\_Install\\_Guide\\_xy.pdf](#) in the \Documentation\Manuals - folder

### 3.13.1 Content of Service Pack and recommended installation

- INCA V7.4.2
- INCA V7.4.2 HF1

Free general INCA Add-Ons:

- INCA AddOn eCDM V7.4.2
- INCA AddOn DriveRecorder V7.4.2

## INCA V7.4 Service Pack 7.1

Release: February 2024

- INCA AddOn Video Tutorials V7.4.2

### Licensed INCA Add-Ons

- INCA AddOn MCE V7.4.2
- INCA AddOn Vector-Hardware V7.4.2
- INCA AddOn FlexRay V7.4.2
- INCA AddOn LIN V7.4.2
- INCA AddOn QM-Basic V7.4.2
- INCA AddOn EIP V7.4.2
- INCA AddOn SIP V7.4.2
- INCA AddOn ODX V7.4.2
- INCA AddOn CAN-Transmit V7.4.2
- INCA AddOn INCA-VoiceRecorder V7.4.2
- INCA AddOn INCA-TOUCH V7.4.2

### Further ETAS Products:

- MDA V8.6.2 Build 617 HF1
- ETK Tools V4.3.2
- MDF Shell Extension V2.2.0
- **HSP V13.2.1**
- ETAS License Manager V1.8.8 and BOA EBI Distribution Package V2.34  
Together the INCA Service Pack the ETAS License Manager (LiMa) is shipped.  
All ETAS software products are sharing only one installation of the ETAS LiMa. Therefore each product installation installs LiMa only if there is an older or no version available on the target computer. Another ETAS software product might update LiMa to a succeeding version.  
The same is valid for the BOA EBI Distribution Package.
- Setup Service Pack V2.4.2 (not installed)

Shipped with the INCA Service Pack, but manual installation required:

- INCA-MIP V7.4.2 (manual installation, see important notes above)

In addition, the update of the supported HW with the corresponding HSP V13.2 is required (available on the ETAS Download Center and integrated in the INCA Service Pack)

### 3.13.2 Known issues and important hints

- After the installation of the INCA Service Pack a reboot of the computer system is recommended. This is also true for hotfix installations.
- INCA add-ons (or INCA **engineering add-ons**) which are not part of the INCA Service Pack has to be updated manually to avoid unexpected behavior. Not updated Add-ons might lead to system errors or wrong results.

### 3.13.3 Solved known issue and important hints

- See also the Release Notes of INCA, INCA Add-Ons, MDA, ETK Tools, and HSP in the folder \Documentation

## INCA V7.4 Service Pack 7.1

Release: February 2024

- Solved with HSP V13.3.1:  
#705323 ES891 does not boot anymore after HSP update started from INCA Online Firmware Check

### 3.13.4 Changed installations, major bug fixes and improvements

#### *Updated products, add-ons, components*

- HSP V13.2.1

#### *New products, add-ons, components*

- NA

#### *New Features and bug fixes*

- See also SP2 below.

### 3.14 INCA V7.4 SP 2.1

Details on Service Pack Installation – see also [INCA\\_v7.4\\_Install\\_Guide\\_xy.pdf](#) in the \Documentation\Manuals - folder

#### 3.14.1 Content of Service Pack and recommended installation

- INCA V7.4.2

- **INCA V7.4.2 HF1**

Free general INCA Add-Ons:

- INCA AddOn eCDM V7.4.2
- INCA AddOn DriveRecorder V7.4.2
- INCA AddOn Video Tutorials V7.4.2

Licensed INCA Add-Ons

- INCA AddOn MCE V7.4.2
- INCA AddOn Vector-Hardware V7.4.2
- INCA AddOn FlexRay V7.4.2
- INCA AddOn LIN V7.4.2
- INCA AddOn QM-Basic V7.4.2
- INCA AddOn EIP V7.4.2
- INCA AddOn SIP V7.4.2
- INCA AddOn ODX V7.4.2
- INCA AddOn CAN-Transmit V7.4.2
- INCA AddOn INCA-VoiceRecorder V7.4.2
- INCA AddOn INCA-TOUCH V7.4.2

Further ETAS Products:

- **MDA V8.6.2 Build 617 HF1**
- ETK Tools V4.3.2

## INCA V7.4 Service Pack 7.1

Release: February 2024

- MDF Shell Extension V2.2.0
- HSP V13.2.0
- ETAS License Manager V1.8.8 and BOA EBI Distribution Package V2.34  
Together the INCA Service Pack the ETAS License Manager (LiMa) is shipped.  
All ETAS software products are sharing only one installation of the ETAS LiMa. Therefore each product installation installs LiMa only if there is an older or no version available on the target computer. Another ETAS software product might update LiMa to a succeeding version.  
The same is valid for the BOA EBI Distribution Package.
- Setup Service Pack V2.4.2 (not installed)

Shipped with the INCA Service Pack, but manual installation required:

- INCA-MIP V7.4.2 (manual installation, see important notes above)

In addition, the update of the supported HW with the corresponding HSP V13.2 is required (available on the ETAS Download Center and integrated in the INCA Service Pack)

### 3.14.2 Known issues and important hints

- After the installation of the INCA Service Pack a reboot of the computer system is recommended. This is also true for hotfix installations.
- INCA add-ons (or INCA **engineering add-ons**) which are not part of the INCA Service Pack has to be updated manually to avoid unexpected behavior. Not updated Add-ons might lead to system errors or wrong results.

### 3.14.3 Solved known issue and important hints

- See also the INCA Release Notes and Release Notes in \Documentation

### 3.14.4 Changed installations, major bug fixes and improvements

#### *Updated products, add-ons, components*

- INCA V7.4.2 with INCA V7.4.2 HF1
- MDA V8.6.2 Build 617 HF1

#### *New products, add-ons, components*

- NA

#### *New Features and bug fixes*

- See also SP2 below.

## 3.15 INCA V7.4 SP 2

Details on Service Pack Installation – see also [INCA\\_V7.4\\_Install\\_Guide\\_xy.pdf](#) in the \Documentation\Manuals - folder

### 3.15.1 Content of Service Pack and recommended installation

- INCA V7.4.2

Free general INCA Add-Ons:

- INCA AddOn eCDM V7.4.2
- INCA AddOn DriveRecorder V7.4.2
- INCA AddOn Video Tutorials V7.4.2

Licensed INCA Add-Ons

- INCA AddOn MCE V7.4.2
- INCA AddOn Vector-Hardware V7.4.2
- INCA AddOn FlexRay V7.4.2
- INCA AddOn LIN V7.4.2
- INCA AddOn QM-Basic V7.4.2
- INCA AddOn EIP V7.4.2
- INCA AddOn SIP V7.4.2
- INCA AddOn ODX V7.4.2
- INCA AddOn CAN-Transmit V7.4.2
- INCA AddOn INCA-VoiceRecorder V7.4.2
- INCA AddOn INCA-TOUCH V7.4.2

Further ETAS Products:

- MDA V8.6.2
- ETK Tools V4.3.2
- MDF Shell Extension V2.2.0
- HSP V13.2.0
- ETAS License Manager V1.8.8 and BOA EBI Distribution Package V2.34  
Together the INCA Service Pack the ETAS License Manager (LiMa) is shipped.  
All ETAS software products are sharing only one installation of the ETAS LiMa. Therefore each product installation installs LiMa only if there is an older or no version available on the target computer. Another ETAS software product might update LiMa to a succeeding version.  
The same is valid for the BOA EBI Distribution Package.
- Setup Service Pack V2.4.2 (not installed)

Shipped with the INCA Service Pack, but manual installation required:

- INCA-MIP V7.4.2 (manual installation, see important notes above)

In addition, the update of the supported HW with the corresponding HSP V13.2 is required (available on the ETAS Download Center and integrated in the INCA Service Pack)

### 3.15.2 Known issues and important hints

- After the installation of the INCA Service Pack a reboot of the computer system is recommended. This is also true for hotfix installations.

## INCA V7.4 Service Pack 7.1

Release: February 2024

- INCA add-ons (or INCA **engineering add-ons**) which are not part of the INCA Service Pack has to be updated manually to avoid unexpected behavior. Not updated Add-ons might lead to system errors or wrong results.

### 3.15.3 Solved known issue and important hints

- See also the INCA Release Notes and Release Notes in \Documentation

### 3.15.4 Changed installations, major bug fixes and improvements

#### *Updated products, add-ons, components*

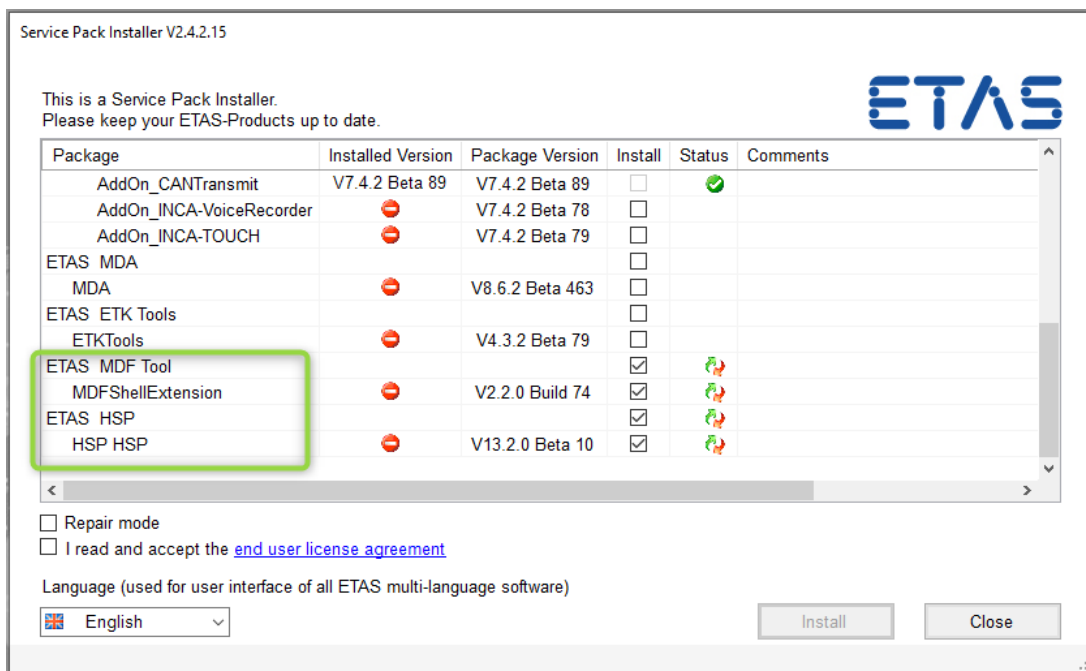
- All

#### *New products, add-ons, components*

- MDF Shell Extension V2.2.0 integrated into the Service Pack Installation
- HSP V13.2.0 first time shipped with the Service Pack and integrated into the Service Pack Installation

#### *New Features and bug fixes*

- New Products integrated into the Service Pack for automatic installation, up- and downgrade:



- MDF Shell Extension V2.2.0
- HSP V13.2.0
- **HSP Installation with special handling for up-and downgrade**

Default behavior in both cases: The shipped FW Service Pack is added to the HSP installation. Previous FW Service Packs are not changed.

- Default HSP Update



**INCA V7.4 Service Pack 7.1**

Release: February 2024

The HSP update tool will be updated and the new FW Service Pack that comes with the HSP installation will be **added** to the HSP installation. Previously installed FW Service Packs are still available.

After installation, the new HSP version is displayed under "Installed Version" and "Package Version".

- Default HSP Downdate

The HSP update tool is **not** downdated and the FW Service Pack that comes with the HSP installation of the INCA Service Pack is **added** to the HSP installation on the computer. Previously installed FW Service Packs are still available. To indicate, that this is not a real downdate, the normal installation icon is displayed (but not the downdate icon):

ETAS MDF Tool			<input type="checkbox"/>	
MDFShellExtension	V2.2.0 Build 74	V2.2.0 Build 69	<input checked="" type="checkbox"/>	
ETAS HSP			<input type="checkbox"/>	
HSP HSP	V13.2.0 Beta 10	V13.2.0 Beta 8	<input checked="" type="checkbox"/>	

After the installation, the previously installed higher HSP version is displayed as "Installed Version" and the lower HSP version as "Package Version" to indicate that the previously installed HSP update tool is still installed.

ETAS MDF Tool			<input type="checkbox"/>	
MDFShellExtension	V2.2.0 Build 69	V2.2.0 Build 69	<input type="checkbox"/>	
ETAS HSP			<input type="checkbox"/>	
HSP HSP	V13.2.0 Beta 10	V13.2.0 Beta 8	<input type="checkbox"/>	

(The higher version of the HSP update tool is required for newer FW already installed in order to also support newer HW)

The HSP option "*RemoveHSP\_ServicePacks*" removes the earlier FW Service Packs and only installs the FW Service Pack that comes with the HSP installation of the INCA Service Pack (valid for upgrade and downgrade). This option is recommended if only the FW that matches the INCA version is to be used.

Note: This option is not recommended if several versions of the INCA Service Pack are installed in parallel (e.g. INCA V7.4 and V7.3) – since the required FW for all other Service Packs will be then no longer available and must be reinstalled manually (using the HSP Service Pack)

To use this option, change the "*RemoveHSP\_ServicePacks*" option from *defaultValue="false"* to "*true*" in the *InstallationDefaultSettings.xml* (supplied with the HSP installation). See corresponding section:

```
<Package
  ID="HSP HSP"
  displayName="HSP">
  <CustomParameters>
    <Variable
      name="RemoveHSP_ServicePacks"
      defaultValue="false"
```

```

validation="none"
description="When set to 'true' existing ServicePacks from HSP will be removed,
otherwise current HSP Service Pack will be added to the installed ones." />
</CustomParameters>
</Package>

```

- HSP Update with option "RemoveHSP\_ServicePacks" defaultValue="true"  
 The HSP update tool is updated. Previously installed FW Service Packs will be removed. The FW Service Pack delivered with the HSP installation will be installed into the HSP installation.  
 After the installation, the new HSP version is displayed under "Installed Version" and "Package Version".
- HSP Downdate with option "RemoveHSP\_ServicePacks" defaultValue="true"  
 The HSP update tool is **not** downdated. Previously installed FW Service Packs will be removed. The FW Service Pack delivered with the HSP installation will be installed into the HSP installation.  
 After the installation, the previously installed higher HSP version is displayed as "Installed Version" and the lower HSP version as "Package Version" to indicate that the previously installed HSP update tool is still installed.

ETAS MDF Tool			<input type="checkbox"/>	✓
MDFShellExtension	V2.2.0 Build 69	V2.2.0 Build 69	<input type="checkbox"/>	✓
ETAS HSP			<input type="checkbox"/>	✓
HSP HSP	V13.2.0 Beta 10	V13.2.0 Beta 8	<input type="checkbox"/>	✓

Note: If the installed HSP version and the version included in the Service Pack are the same, nothing is changed.  
 In this case, the FW Pack has to be checked and reinstalled manually with the HSP installation (especially if the FW Service Pack has been removed/downdated to an earlier version e.g. with the "RemoveHSP\_ServicePacks" option).

### 3.16 INCA V7.4 SP 1

---

Details on Service Pack Installation – see also [INCA\\_V7.4\\_Install\\_Guide\\_xy.pdf](#) in the \Documentation\Manuals - folder

#### 3.16.1 Content of Service Pack and recommended installation

---

##### - INCA V7.4.1

Free general INCA Add-Ons:

- INCA AddOn eCDM V7.4.1
- INCA AddOn DriveRecorder V7.4.1
- INCA AddOn Video Tutorials V7.4.1

Licensed INCA Add-Ons

- INCA AddOn MCE V7.4.1
- INCA AddOn Vector-Hardware V7.4.1

## INCA V7.4 Service Pack 7.1

Release: February 2024

- INCA AddOn FlexRay V7.4.1
- INCA AddOn LIN V7.4.1
- INCA AddOn QM-Basic V7.4.1
- INCA AddOn EIP V7.4.1
- INCA AddOn SIP V7.4.1
- INCA AddOn ODX V7.4.1
- INCA AddOn CAN-Transmit V7.4.1
- INCA AddOn INCA-VoiceRecorder V7.4.1
- INCA AddOn INCA-TOUCH V7.4.1

Further ETAS Products:

- MDA V8.6.1
- ETK Tools V4.3.1
- ETAS License Manager V1.8.7 and
- BOA EBI Distribution Package V2.33

Together the INCA Service Pack the ETAS License Manager (LiMa) is shipped.

All ETAS software products are sharing only one installation of the ETAS LiMa. Therefore each product installation installs LiMa only if there is an older or no version available on the target computer. Another ETAS software product might update LiMa to a succeeding version.

The same is valid for the BOA EBI Distribution Package.

- Setup Service Pack V2.4.1 (not installed)

Shipped with the INCA Service Pack, but manual installation required:

- INCA-MIP V7.4.1 (manual installation, see important notes above)
- MDF Shell Extension V2.0.5 (manual installation, see important notes above)

In addition the update of the supported HW with the corresponding HSP is required:

- HSP V13.1 (available on the ETAS Download Center)

### 3.16.2 Known issues and important hints

- After the installation of the INCA Service Pack a reboot of the computer system is recommended. This is also true for hotfix installations.
- INCA add-ons (or INCA **engineering add-ons**) which are not part of the INCA Service Pack has to be updated manually to avoid unexpected behavior. Not updated Add-ons might lead to system errors or wrong results.

### 3.16.3 Solved known issue and important hints

- See also the INCA Release Notes and Release Notes in \Documentation

### 3.16.4 Changed installations, major bug fixes and improvements

#### *Updated products, add-ons, components*

- All but not MDF Shell Extension V2.0.5

#### *New products, add-ons, components*

- NA

#### *New Features and bug fixes*

- NA

### 3.17 INCA V7.4 SP 0

Details on Service Pack Installation – see also [INCA\\_V7.4\\_Install\\_Guide\\_xy.pdf](#) in the `\Documentation\Manuals` - folder

#### 3.17.1 Content of Service Pack and recommended installation

- INCA V7.4.0

Free general INCA Add-Ons:

- INCA AddOn eCDM V7.4.0
- INCA AddOn DriveRecorder V7.4.0
- INCA AddOn Video Tutorials V7.4.0

Licensed INCA Add-Ons

- INCA AddOn MCE V7.4.0
- INCA AddOn Vector-Hardware V7.4.0
- INCA AddOn FlexRay V7.4.0
- INCA AddOn LIN V7.4.0
- INCA AddOn QM-Basic V7.4.0
- INCA AddOn EIP V7.4.0
- INCA AddOn SIP V7.4.0
- INCA AddOn ODX V7.4.0
- INCA AddOn CAN-Transmit V7.4.0
- INCA AddOn INCA-VoiceRecorder V7.4.0
- INCA AddOn INCA-TOUCH V7.4.0

Further ETAS Products:

- MDA V8.6.0
- ETK Tools V4.3.0
- ETAS License Manager V1.8.6 and
- BOA EBI Distribution Package V2.32

Together the INCA Service Pack the ETAS License Manager (LiMa) is shipped.

All ETAS software products are sharing only one installation of the ETAS LiMa. Therefore each product installation installs LiMa only if there is an older or no version available on

## INCA V7.4 Service Pack 7.1

Release: February 2024

the target computer. Another ETAS software product might update LiMa to a succeeding version.

The same is valid for the BOA EBI Distribution Package.

- Setup Service Pack V2.4.0 (not installed)

Shipped with the INCA Service Pack, but manual installation required:

- INCA-MIP V7.4.0 (manual installation, see important notes above)
- MDF Shell Extension V2.0.5 (manual installation, see important notes above)

In addition the update of the supported HW with the corresponding HSP is required:

- HSP V13.0 (available on the ETAS Download Center and DVD)

### 3.17.2 Known issues and important hints

- After the installation of the INCA Service Pack a reboot of the computer system is recommended. This is also true for hotfix installations.
- INCA add-ons (or INCA **engineering add-ons**) which are not part of the INCA Service Pack has to be updated manually to avoid unexpected behavior. Not updated Add-ons might lead to system errors or wrong results.

### 3.17.3 Solved known issue and important hints

- See also the INCA Release Notes and Release Notes in \Documentation
- #663640 Service Pack Installer: Installation of INCA 7.3 fails with exception. If during or after the installation one of the included products of the Service Pack requires a reboot, it might happen that the Service Pack Installer (SPI) crashes. It is then typically not possible to start the SPI again to continue the installation, as the reboot is pending. Please reboot the computer in such case. Typically, the SPI will then start automatically and finalize the installation. If not, please start the SPI again and select your products, which shall be additionally installed.

### 3.17.4 Changed installations, major bug fixes and improvements

#### Updated products, add-ons, components

- All but not MDF Shell Extension V2.0.5

#### New products, add-ons, components

- NA

#### New Features and bug fixes

- #663640 Service Pack Installer: Installation of INCA 7.3 fails with exception.

## **4      Contact, Support and Problem Reporting**

---

For details of your local sales office as well as your local technical support team and product hotlines, take a look at the ETAS website:

ETAS subsidiaries                      WWW:    [www.etas.com/en/contact.php](http://www.etas.com/en/contact.php)

ETAS technical support              WWW:    [www.etas.com/en/hotlines.php](http://www.etas.com/en/hotlines.php)